

diabetes

CONTENTS

FEBRUARY

1965

Volume 14 • Number 2

ORIGINAL CONTRIBUTIONS

- LONG-TERM OBSERVATIONS ON ORAL HYPOGLYCEMIC AGENTS IN DIABETES 59
The Effect of Carbutamide and Tolbutamide
 Hella Bernhard, M.D., Berlin

- A COMPARISON OF INSULIN-LIKE ACTIVITY CONTAINED IN THE SERUM PROTEINS OF NORMAL SUBJECTS AND DIABETIC PATIENTS 71
 Lawrence Power, M.D., Bernardo Reyes-Leal, M.D., and Jerome W. Conn, M.D., with the technical assistance of L. L. DePew, Ann Arbor

- PATTERNS OF DECREASE OF FREE FATTY ACIDS DURING GLUCOSE TOLERANCE TESTS 77
 Eleazar Shafrir, Ph.D., and Alisa Gutman, M.D., Jerusalem

- CARBOHYDRATE METABOLISM IN MYOCARDIAL INFARCTION 84
 Behavior of Blood Glucose and Free Fatty Acids After Glucose Loading
 Aharon M. Cohen, M.D., and Eleazar Shafrir, Ph.D., Jerusalem

- INACTIVATION OF INSULIN BY ADIPOSE TISSUE 87
 Mario Di Girolamo, M.D., Daniel Rudman, M.D., Martin F. Malkin, B.S., and Luis A. Garcia, M.S., New York

- COMPARISON OF PANCREATIC AND STEROID DIABETES IN RESPECT TO TUMOR GROWTH AND GLYCOSURIA 93
 Dwight J. Ingle, Ph.D., Chicago

- A NEW CARBOHYDRATE SOLUTION FOR TESTING GLUCOSE TOLERANCE 96
 Jack R. Leonards, M.D., Ph.D., E. Perry McCullagh, M.D., and Terrence C. Christopher, M.D., Cleveland

- CARBOHYDRATE METABOLISM IN PEOPLE LIVING IN CHRONIC HYPOXIA 100
 Rolando Calderon, M.D., and L. Alberto Llerena, M.D., Lima, Peru

- ATTITUDES OF DIABETIC BOYS AND GIRLS TOWARDS DIABETES 106
 Dave M. Davis, M.D., Joseph C. Shipp, M.D., and Evan G. Pattishall, M.D., Gainesville, Florida

EDITORIAL

- VASCULAR DISEASE IN DIABETES 110
 Arthur R. Colwell, Sr., M.D., Chicago


- BOOK REVIEWS 111

- ABSTRACTS 113

- ORGANIZATION SECTION 118

- NEWS OF AFFILIATE ASSOCIATIONS 120

- NEWS NOTES 120



your insulin patients
will never enjoy it...

but they'll thank you for
recommending the
sharpest needle ever

B-D YALE sterile disposable needle. *The needle does more than any other component of hypodermic equipment to provide safety, comfort and convenience. The first, and lasting, impression on your diabetic patient is that made by the needle point. The YALE disposable needle is the one most widely used by physicians, hospitals and diabetics because *needle sharpness* as well as *sterility* mean so much.*

Among its advantages:

- MICROLANCE point—the sharpest ever—penetrates with greater ease...makes injection almost pain-free
- New sterile needle for each insulin injection — avoids risk of infection
- Peel-apart package permits aseptic removal
- Fits any Luer or LUER-LOK syringe tip
- One-time use ends bothersome cleaning and resterilizing

Available in 26Gx $\frac{1}{2}$ " size. 30-day package supplies 30 needles plus a 40-unit or an 80-unit scale syringe at no extra charge (D1-40S or D1-80S).

B-D BECTON, DICKINSON AND COMPANY • RUTHERFORD, NEW JERSEY
In Canada: Becton, Dickinson & Co., Canada, Ltd., Clarkson, Ontario

DIABETES®

The Journal of the American Diabetes Association

EDITOR, IRVING GRAEF, M.D., *New York* • CHAIRMAN, EDITORIAL BOARD, FRANCIS D. W. LUKENS, M.D., *Philadelphia*
VICE CHAIRMAN, EDITORIAL BOARD, AND ASSOCIATE EDITOR, HARVEY C. KNOWLES, JR., M.D., *Cincinnati*
ASSOCIATE EDITOR, JAMES ASHMORE, PH.D., *Indianapolis* • ACTING ASSOCIATE EDITOR, DAVID M. KIPNIS, M.D., *St. Louis*
ADVISORY EDITOR, CHARLES H. BEST, M.D., *Toronto* • ADVISORY EDITOR, FRANK N. ALLAN, M.D., *Boston*
ABSTRACTS EDITOR, WILLIAM R. KIRTLEY, M.D., *Indianapolis* • MANAGING EDITOR, EDWARD W. SANDERSON, *New York*
ART EDITOR, W. I. VAN DER POEL, *New York*

EDITORIAL BOARD

TERM EXPIRING DECEMBER 1965
FREDERICK C. GOETZ, M.D., *Minneapolis*
ARNOLD LAZAROW, M.D., PH.D., *Minneapolis*
RACHMIEL LEVINE, M.D., *New York*
ALEXANDER MARBLE, M.D., *Boston*
HENRY T. RICKETTS, M.D., *Chicago*
THEODORE B. VAN ITALLIE, M.D., *New York*

TERM EXPIRING DECEMBER 1966
THADDEUS S. DANOWSKI, M.D., *Pittsburgh*
C. F. GASTINEAU, M.D., *Rochester, Minn.*
SYDNEY S. GELLIS, M.D., *Boston*
DAVID M. KIPNIS, M.D., *St. Louis*
HERBERT H. MARKS, *New York*
GERALD A. WRENSHALL, PH.D., *Toronto*

TERM EXPIRING DECEMBER 1967
STEFAN S. FAJANS, M.D., *Ann Arbor*
PETER H. FORSHAM, M.D., *San Francisco*
PHILIP M. LECOMPTE, M.D., *Boston*
IRVING H. LEOPOLD, M.D., *New York*
MAX MILLER, M.D., *Cleveland*
HERBERT POLLACK, M.D., *Leesburg, Va.*

ABSTRACTORS

TERM EXPIRING DECEMBER 1965
BURIS R. BOSHELL, M.D., *Birmingham*
ROBERT F. BRADLEY, M.D., *Boston*
JAMES M. PICKENS, M.D., *Columbia, Mo.*
CHARLES A. ROSENBERG, M.D., *Batavia, N.Y.*
THOMAS G. SKILLMAN, M.D., *Omaha*
LEON S. SMELO, M.D., *Birmingham*

TERM EXPIRING DECEMBER 1966
SAMUEL B. BEASER, M.D., *Boston*
ARTHUR R. COLWELL, JR., M.D., *Wilmette, Ill.*
DAVID M. GIBSON, M.D., *Indianapolis*
HIROMICHI T. NARAHARA, M.D., *St. Louis*
OTAKAR V. SIREK, M.D., PH.D., *Toronto*
ELEANOR A. WASKOW, M.D., *Phoenix*

TERM EXPIRING DECEMBER 1967
MARIA G. BUSE, M.D., *Charleston, S.C.*
JOHN A. GALLOWAY, M.D., *Indianapolis*
BERT F. KELTZ, M.D., *Oklahoma City*
CHARLES R. SHUMAN, M.D., *Philadelphia*

DIABETES is published by the American Diabetes Association, Inc., to provide an official Journal for the Association and to furnish the medical profession with information concerning diabetes and related fields of medicine.

Contributions are invited from practicing physicians, clinical and laboratory investigators, and others who have data of importance to offer in these fields. Manuscripts, if suitable, will be accepted providing that the text has not been printed elsewhere.

Matter appearing in DIABETES is copyrighted. Permission to reproduce all or part of papers appearing in it may be granted on application, under appropriate conditions and if proper credit is given. Such permission should be requested by written application to the Secretary of the Association.

All signed articles and editorials are the responsibility of the author(s) and not that of the American Diabetes Association.

The Editors will be pleased to consider

for publication papers presented at the Annual Meeting of the American Diabetes Association.

Manuscript Specifications: The length of manuscripts (not including special articles or lectures) should be limited to 5,000 words, exclusive of illustrations, etc. Exceptions to this limitation may be made at the discretion of the Editors.

Communications for the "Brief Notes and Comments" department should not exceed 1,000 words except in unusual circumstances. Figures and tables in these brief communications should be limited to one of each, and references should not exceed twenty in number.

Manuscripts should be typewritten, with double spacing and, if possible, submitted in triplicate together with three copies of figures and photomicrographs.

References should be presented in the style illustrated by the following examples:

For Periodicals—Banting, F. G., and Best, C. H.: The internal secretion of the pancreas. *J. Lab. Clin. Med.* 7:251-66, Feb. 1922.

For Books—Allen, Frederick M.: *Studies Concerning Glycosuria and Diabetes*. Cambridge, Harvard University Press, 1913, p. 461.

An abstract or summary of the content of the paper in not more than 250 words should usually appear at the beginning. If possible, this should be self-contained and understandable without reference to the text.

Photographs, drawings and figures should be suitable for reproduction purposes. Photographs should be unmounted, untrimmed glossy prints. The names of authors should appear on the back. The tops of photographs and figures should be indicated.

Galley proofs are sent to the principal author of each paper, with a price list and order blank for reprints.

All manuscripts and editorial correspondence should be addressed to the Editorial Office, DIABETES, American Diabetes Association, Inc., 18 East 48th Street, New York, New York, 10017.

Subscription and Advertising Information

DIABETES: The Journal of the American Diabetes Association is published every month by the Association at 18 East 48th Street, New York, New York 10017. Entire contents copyright 1965 by the American Diabetes Association, Inc.; all rights reserved. SECOND CLASS POSTAGE PAID AT NEW YORK, N. Y.

Members receive the Journal as part of their membership privileges. The annual subscription

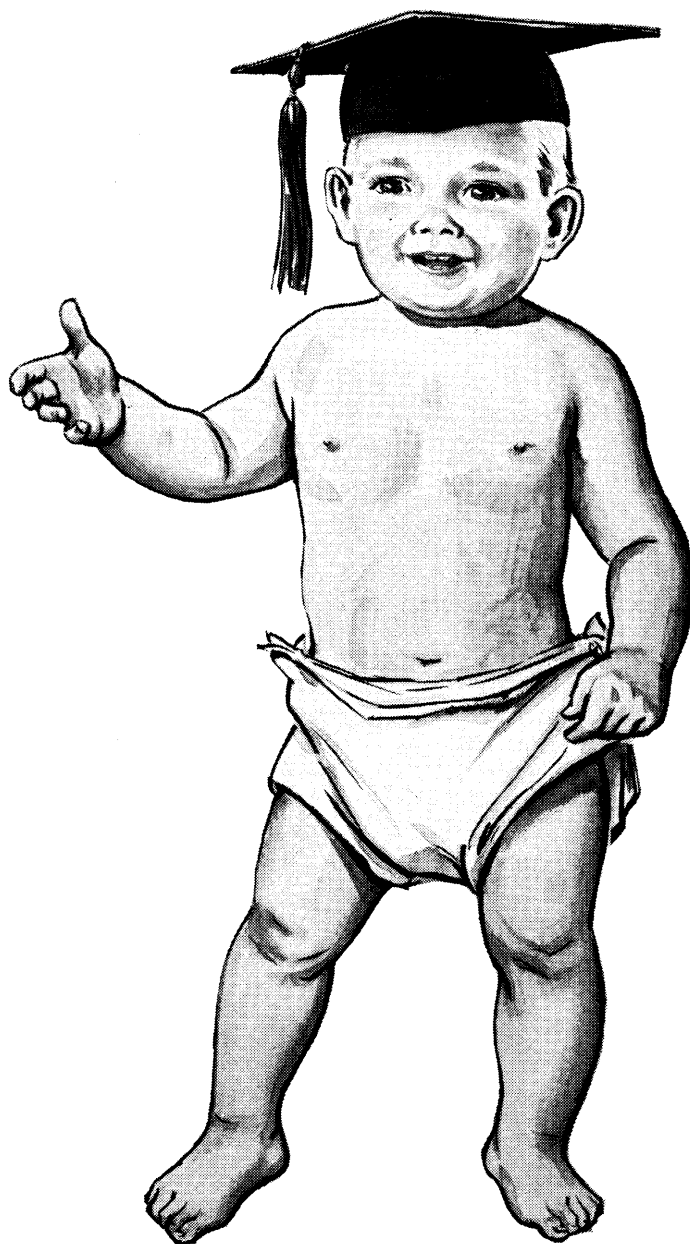
rates for nonmembers are as follows: United States, U. S. Possessions, Canada and the Pan-American Union, \$14.00 per year; elsewhere, \$16.00 per year. Individual copies available at \$1.50 each.

Medical students and physicians within five years after completion of medical school and bioscientists who are predoctoral or not more than two years postdoctoral: \$7.00 per year.

Correspondence concerning subscriptions should

be addressed to the Subscription Department, DIABETES. Checks, money orders and drafts for subscriptions should be made payable to the American Diabetes Association, Inc., and sent to the aforementioned address.

All inquiries about advertising and other business matters should be addressed to the Executive Director of the American Diabetes Association. The publishers reserve in their full discretion the right to accept or reject any proposed advertising and the right to cancel any advertising contract.



Business, shake hands with your future!

Business is facing real competition today—tomorrow it will be no easier.

You will have to develop advantages—in product, in service, in operating costs.

You'll need leaders. They'll provide ideas and initiative in research and development, distribution and sales, financial management and every other department of your business.

Where will these leaders come from?

From higher education, mostly. Business is the biggest user of the college product. A recent ex-

ecutive survey made of 100 manufacturing businesses revealed that of the 200 top executives, 86% were college-educated.

But our colleges are facing problems. They need facilities, yes. But even more urgent is the demand for competent teachers. This is the human equation that will help America develop and maintain a higher *margin of excellence*.

It's everybody's job, but the business community has the largest stake. College is business' best friend. Give to the college of your choice—keep our leaders coming.

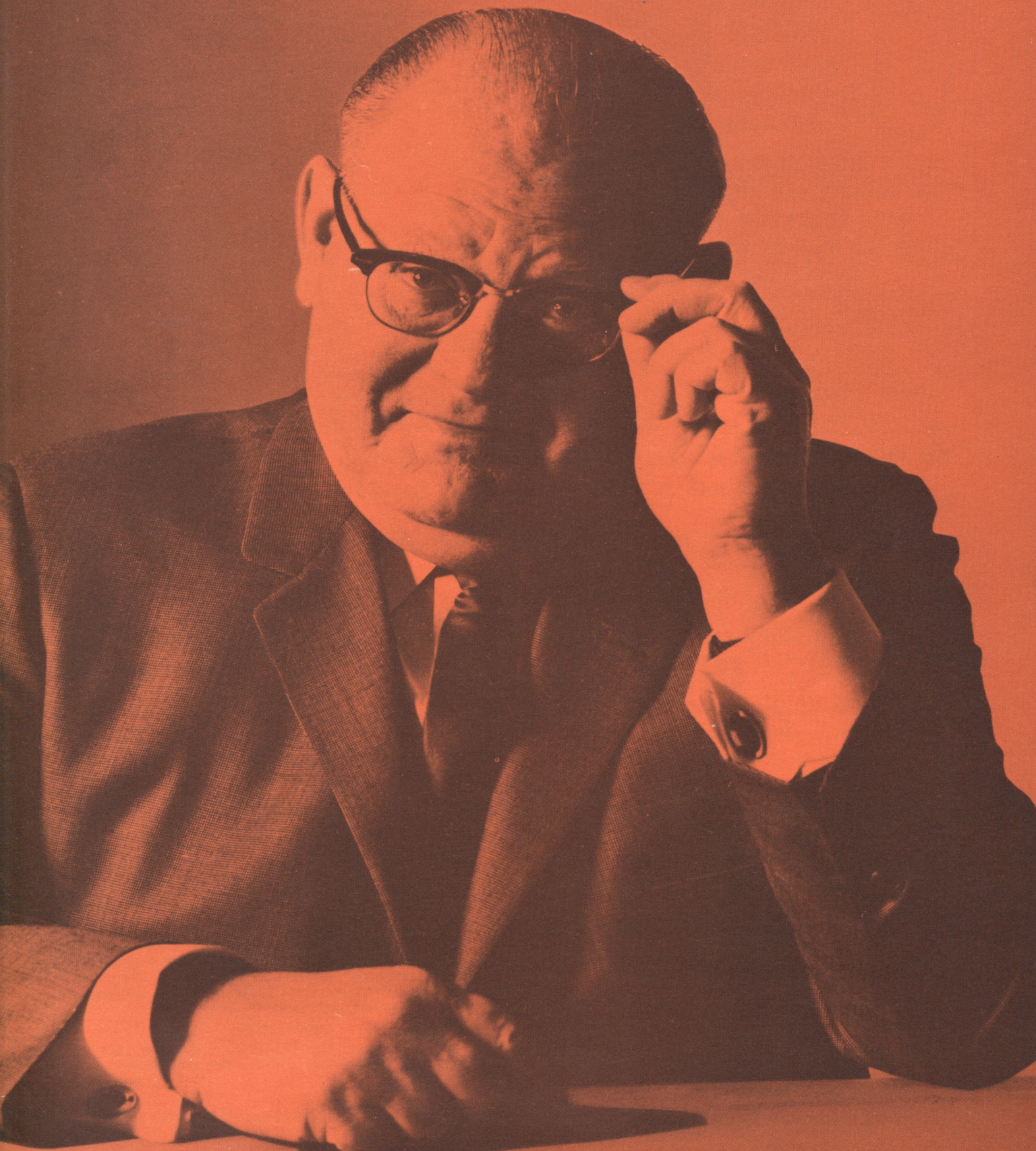


Published as a public service in cooperation with
The Advertising Council and the Council for Financial Aid to Education



the problem:

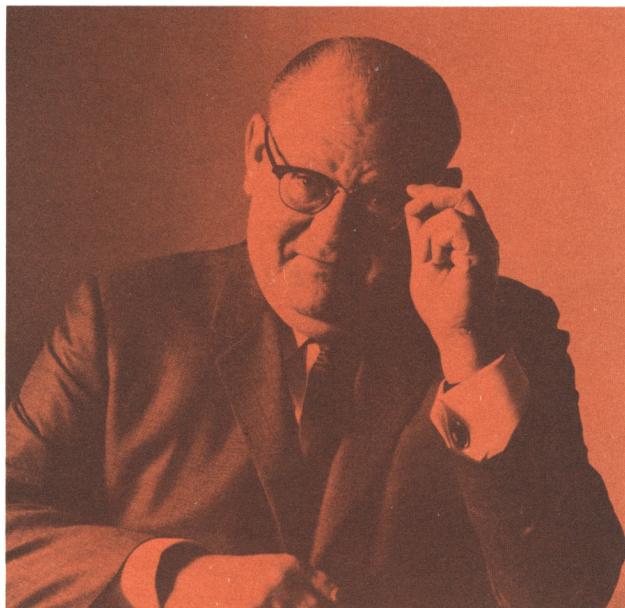
diabetic...overweight...unresponsive to diet alone



the problem: diabetic...overweight...unresponsive to diet alone

the answer: "...if dietary control seems to be unsatisfactory...[and] if the patient is overweight...our first choice is phenformin [DBI] since this is the only oral hypoglycemic agent commercially available at present which does not promote fat deposit."¹

"...with phenformin [DBI] there may be less preferential stimulation of fat synthesis in the obese, diet-resistant diabetic, favoring both blood sugar and body weight control."²



***to manage the stable adult diabetic who is overweight
and unresponsive to diet alone***

DBI-TD

brand of **Phenformin HCl** **timed-disintegration capsules 50 mg.**

DBI together with a proper diet usually affords effective control in the overweight ketoacidosis-resistant diabetic...reduces high blood sugar and elevated serum insulin levels, and encourages gradual weight loss toward normal.³ For the ketoacidosis-prone diabetic, however, insulin is still the essential hypoglycemic drug.

side effects: Gastrointestinal, occurring more often at higher dosage levels, abate promptly upon dosage reduction or temporary withdrawal. **precautions:** Occasionally an insulin-dependent patient will show "starvation" ketosis (acetoneuria without hyperglycemia) which must be differentiated from "insulin-lack" ketosis which is accompanied by acidosis, and treated accordingly. Lactic acidosis has been reported in nondiabetics and diabetics treated with insulin, with diet, and with DBI. Question has arisen regarding possible contribution of DBI to lactic acidosis in patients with renal impairment and azotemia and also those with severe hypotension secondary to myocardial or bowel infarction. Periodic B.U.N. determinations should be made when DBI is administered in the presence of chronic renal disease. DBI should not be used when there is significant azotemia. Any cardiovascular lesion that could result in severe or sustained hypotension, which may itself lead to development of lactic acidosis, should be considered cause for

immediate discontinuation of DBI at least until normal blood pressure has been restored and is maintained without vasopressors. Should lactic acidosis occur from any cause, vigorous attempts should be made to correct circulatory collapse, tissue hypoxia, and pH. **contraindications:** Severe hepatic disease, renal disease with uremia, cardiovascular collapse. Not recommended without insulin in acute complications of diabetes (metabolic acidosis, coma, severe infections, gangrene, surgery). **pregnancy warning:** During pregnancy, until safety is proved, use of DBI, like other oral hypoglycemic drugs, is to be avoided. Consult product brochure for full information.

Also available: DBI tablets, 25 mg.

1. Faludi, G.: J. Am. Med. Women's Assoc. 18:722, 1963. 2. Weller, C. et al.: Scientific Exhibit, A.M.A., June, 1962. 3. Moss, J. M. et al.: Medical Times 92:645, 1964.

U. S. VITAMIN & PHARMACEUTICAL CORP. 800 Second Ave., New York, N.Y. 10017

BACK ISSUES AVAILABLE

Do you have a *complete file of DIABETES: The Journal of the American Diabetes Association*? If not, now is the time to order the missing volumes or separate issues.

Each issue of the Journal since it was first published in January 1952 has contained papers that are essential to every practicing physician and research investigator concerned with diabetes and to all medical libraries.

At present, separate copies of all back issues are available, with the exception of that for January-February, 1961. The prices are \$2 per copy, three for \$4.50. Complete volumes of six issues, with index, can be purchased for \$9 each in the United States, Canada, the Pan American Union, and United States Possessions. Elsewhere, the price is \$10. The volume for 1962 includes the special supplement *Tolbutamide Therapy After Five Years*, while those for 1963 and 1964 contain the supplements *Diabetes-Related Literature Index by Authors and By Key Words In The Title for the year 1960*, and *for the year 1961*, respectively.

Place your order *today* with the American Diabetes Association, 18 East 48th Street, New York, N.Y. 10017.

**IN THE
MANAGEMENT OF
DIABETIC PATIENTS**
*minimize tissue injury,
infection, gangrene and
possible amputation*



**SOOTHE...SOFTEN...MOISTURIZE...
DISINFECT THE DRY FRAGILE SKIN
WITH DAILY WASHINGS WITH
TRIDEN HEX**

BACTERIOSTATIC EMOLLIENT SKIN CLEANSER

A blend of imported Spanish Olive Oil, Squalane and other skin conditioners . . . plus 3% hexachlorophene. Available in 8 fl. oz., quart and gallon plastic bottles.



Write for SAMPLES:
SPIRT & CO., INC.
Waterbury, Connecticut

DIABETES MELLITUS... DIAGNOSIS AND TREATMENT

The American Diabetes Association is privileged to publish a new basic manual for physicians, medical students, and other interested individuals. The volume was developed under the aegis of the Committees on Scientific Publications and Professional Education, and edited by T. S. Danowski, M.D., Chairman of the latter Committee.

The book is one of the Association's major contributions to professional education. It replaces its earlier publication, *Diabetes Guide Book for the Physician*, last published in 1956. The work, which is entirely new, is composed of forty chapters by forty-one outstanding physicians and other life scientists.

Members of the Association have received copies of the book without charge; but copies may be secured at \$2.00, postage prepaid, and quantities may be purchased at lesser cost, as follows:

<u>Quantity</u>	<u>For Affiliate Associations</u>	<u>For General Distribution</u>
1- 9 copies	\$2.00 each	\$2.00
10- 49 copies	1.90 each	1.95
50- 99 copies	1.75 each	1.85
100-249 copies	1.65 each	1.75
250 copies and over	1.50 each	1.60

THE AMERICAN DIABETES ASSOCIATION, INC.
18 East 48th Street, New York, N. Y. 10017



A convenient way to start diabetics on Dymelor®

This handy Complete Treatment Packet is available through your Lilly representative. In most stable adult diabetics, Dymelor provides smooth, efficient control of blood sugar on a convenient and economical once-daily schedule. Use the packet for a free one-week trial of Dymelor.

Tablets Dymelor contain 500 mg. acetohexamide, a new hypoglycemic agent effective in the oral treatment of stable, maturity-onset, nonketotic diabetes.

Contraindications: Sulfonylurea drugs are ineffective when employed as the sole treatment in juvenile, brittle, unstable, or severe diabetes. Insulin is the required therapeutic agent in such cases, although, on occasion, Dymelor may be given concurrently with Insulin.

Dymelor is contraindicated in diabetes complicated by acidosis, ketosis, coma, major surgery, infections, gangrene, or severe trauma.

Dymelor is contraindicated in patients with renal glycosuria or the hyperglycemia occasionally associated with uremia. The hyperresponsiveness of such patients to sulfonylurea drugs may result in prolonged or fatal hypoglycemia. Dymelor should not be used in nondiabetic conditions.

Dymelor is also contraindicated in pregnancy, although reproductive studies in two generations of animals treated with Dymelor have shown no evidence of teratogenesis or any other abnormalities. Because Insulin is the therapy of choice for pregnant diabetic patients, no sulfonylurea agent can be recommended for use in diabetic women who may become pregnant.

Side-Effects: Although hypoglycemia is a manifestation

of the activity of the drug, it is nevertheless desirable to avoid this reaction. In the changeover from Insulin to Dymelor, hypoglycemia can occur at the time both drugs are given simultaneously.

Other untoward reactions observed to date include gastrointestinal disturbances, such as nausea and gastritis; headache, nervousness, and tingling (all possibly related to hypoglycemia); and infrequent cutaneous manifestations of hypersensitivity, characterized by the development of maculopapular skin eruption or other dermatoses.

Four cases of jaundice have been reported, but in none has Dymelor been definitely proved to be the etiologic agent. These cases indicate the need for caution in the use of sulfonylurea agents in patients who have received or are receiving several drugs of types known to produce hepatotoxicity.

White-blood-cell counts have remained unaltered in all reported cases except for a single instance of transient leukopenia (single determination) which developed during the administration of the drug.

Dymelor®
Acetohexamide



*The House for
Diabetic Therapy*

Additional information available to physicians upon request. Eli Lilly and Company, Indianapolis 6, Indiana.

500087