

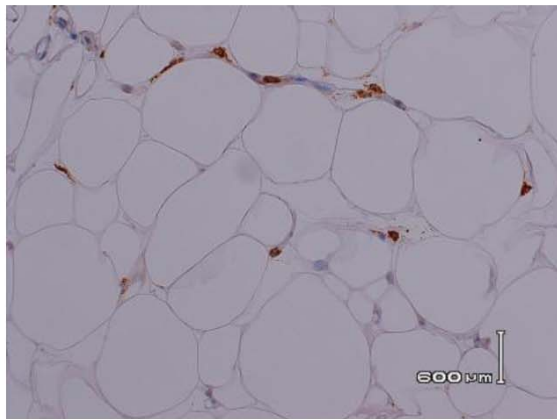
SUPPLEMENTARY DATA

Supplementary Figure 1. Representative CD68-IHC staining showing total macrophage infiltration in the subcutaneous adipose tissue from a high VAT/VAT+SAT obese adolescents (A) and a low VAT/VAT+SAT obese adolescent (B).

Macrophage counting

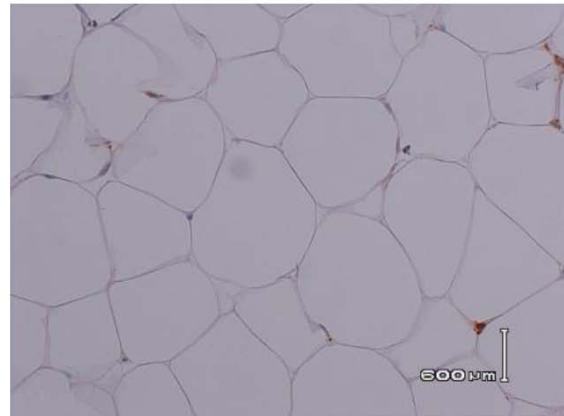
Immunohistochemistry (IHC): CD68 staining

A



Insulin Resistant
Age: 16
BMI: 38
M (clamp): 2 mg/Kg*min

B

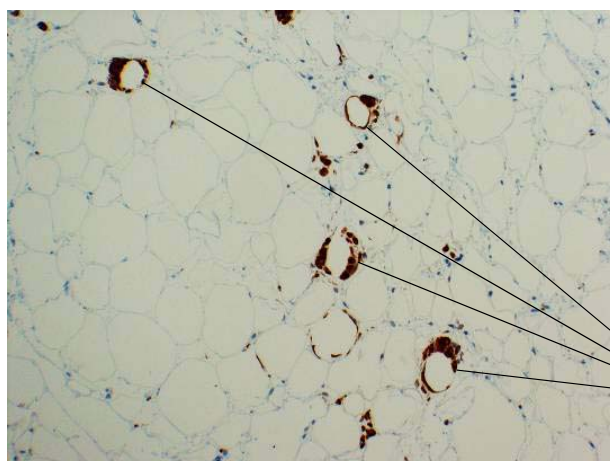


Inulin Sensitive
Age: 16
BMI: 38
M (clamp): 9 mg/Kg*min

Supplementary Figure 2. Representative CD68-IHC staining showing Crown Like Structures.

Crown Like Structures

Immunohistochemistry (IHC): CD68 staining



CLS
"crown like structures"

SUPPLEMENTARY DATA

Supplementary Figure 3. Ratio plasma over tissue ceramides between low (white bars) and high (black bars) group (mean \pm SD, n=21). * indicate that the t-test between the 2 groups was significant at the <0.05 level.

