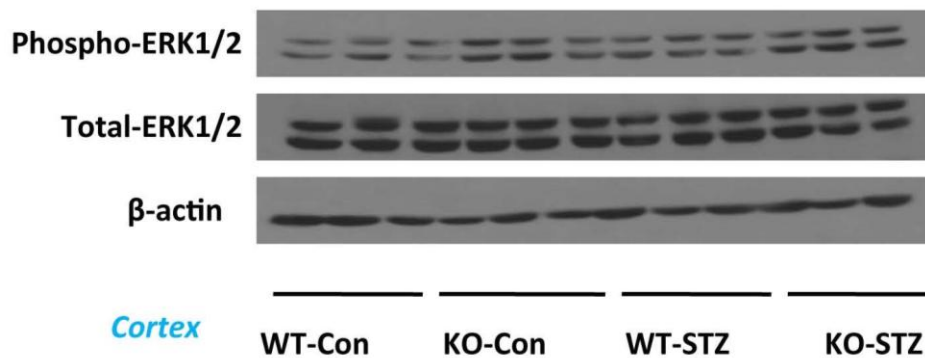


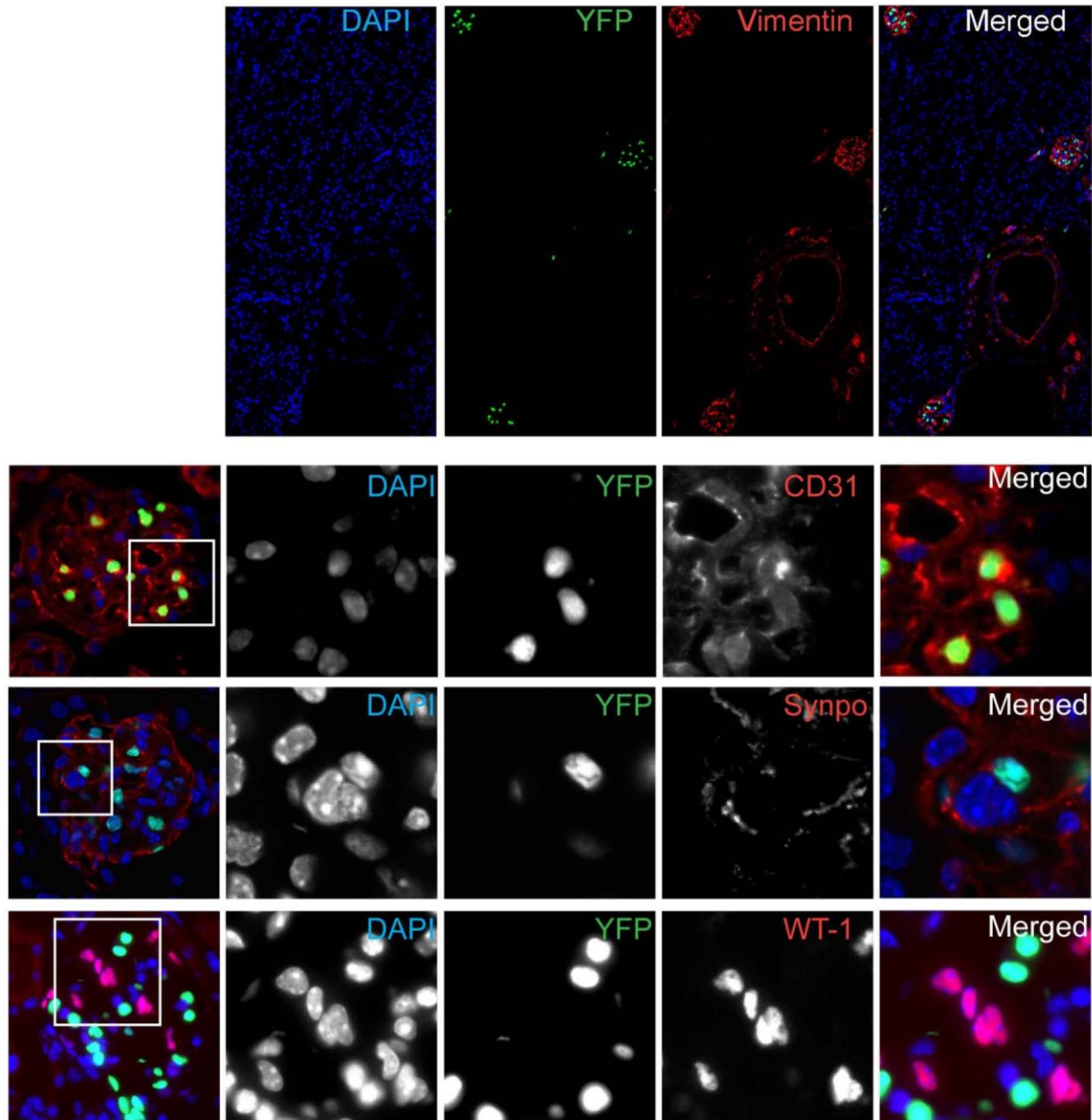
SUPPLEMENTARY DATA

Supplementary Figure 1. Western blot for ERK 1/2 phosphorylation in extracts from renal cortex from BAMBI^{+/+} and ^{-/-} mice 18 weeks after citrate or STZ injection. Extracts were prepared and probed on Western blots with antibodies directed against the phosphorylated (P-) or un-phosphylated, total (T-) form of ERK1/2 as described in *Methods*. β -actin served as loading control. Results shown are from three mice per group.



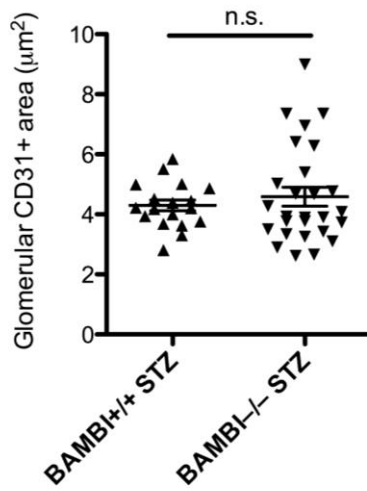
SUPPLEMENTARY DATA

Supplementary Figure 2. Immunofluorescence images from kidneys of BAMBI^{+/+} or ^{-/-} mice, all expressing the histone yellow fluorescent protein under the control of the promoter of Vegfr-2/Flk1 gene and stained with the nuclear dye Hoechst and with antibodies against CD31 (endothelial cells), WT-1 or Synaptopodin (podocyte nuclei), or Vimentin (mesangial cells). Each fluorescence channel is shown individually and as merged image. Images are from adult control BAMBI^{+/+} and ^{-/-} mice expressing H2B-EYFP in glomerular and large vessel endothelial cells. The merged images show that H2B-EYFP colocalizes only with CD31, consistent with its endothelial-restricted expression.

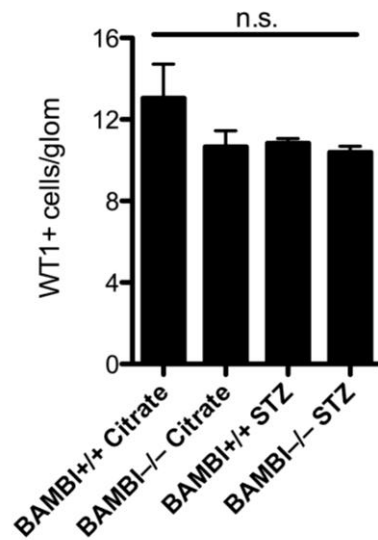


SUPPLEMENTARY DATA

Supplementary Figure 3. Endothelial area per glomerulus as determined by CD31-positivity using computer-assisted morphometry. Results are from 18 glomerular determinations in 3 diabetic BAMBI^{+/+} mice and from 27 glomeruli in 5 diabetic BAMBI^{-/-} mice.



Supplementary Figure 4. Podocyte numbers per glomerulus as determined by WT 1-positive nuclei counts. Values are means ± S.E.M. from 3 mice per group.



SUPPLEMENTARY DATA

Supplementary Table 1. Clinical parameters of the patients whose biopsies were analyzed in **Fig. 1**. All values represent means \pm S.E.M.

Groups (N)	LD (7)	DN (9)	ANS (11)	FSGS (17)
Age	52.4 \pm 5.9	57.8 \pm 2.7	52.0 \pm 3.1	43.2 \pm 3.6
Creatinine	<1.1	2.7 \pm 0.7	2.8 \pm 0.8	1.1 \pm 0.1
eGFR	>60.0	41.4 \pm 10.8	45.1 \pm 10.1	77.9 \pm 7.4
Proteinuria	<0.2	5.6 \pm 2.1	2.2 \pm 1.0	4.4 \pm 0.8

Supplementary Table 2. Primers used for qRT-PCR.

	Forward	Reverse
BAMBI	AGCGCGAGGCGTCAATG	GCAGGCACTAAGCTCAGACT
Vegfr-2	TACAAGTGCTCGTACCGGG	TTGAAATCGACCCTCGGCAG
Angpt1	TCCCTCTGGTGAATATTGGC	TGCTCTGTTTGCGTGCTGTC
Angpt2	AGAAGCAGCAGCATGACC	TGCCACTGGTGGTGAGTCC
Vegfa	ACTGGACCCTGGCTTTACTG	GCTTCGCTGGTAGACATCCA
Tie2	GATGCCGCCATCAAGAGGAT	TGCGGGGCATACTCAATAGC
Raf1	AGTGTTCCAGACTTCTCCAGG	TCTCCAATCAGAGAGGCG
Mek1	TCGTGGGCACGAGATCCTAC	TGCCATCTCCACCAGAGAGAG
Atoh8	TCGCCTAGGAAACGGCCAG	TCCTCAGGATGGCCAGTTTG
Id3	ATCCTGCAGCGTGTCATAG	TCACAAGTTCCGGAGTGAGC
Snon	AGGAAGGTGACCATGTTCCCC	TGAGCGACACATTCCGGTGC