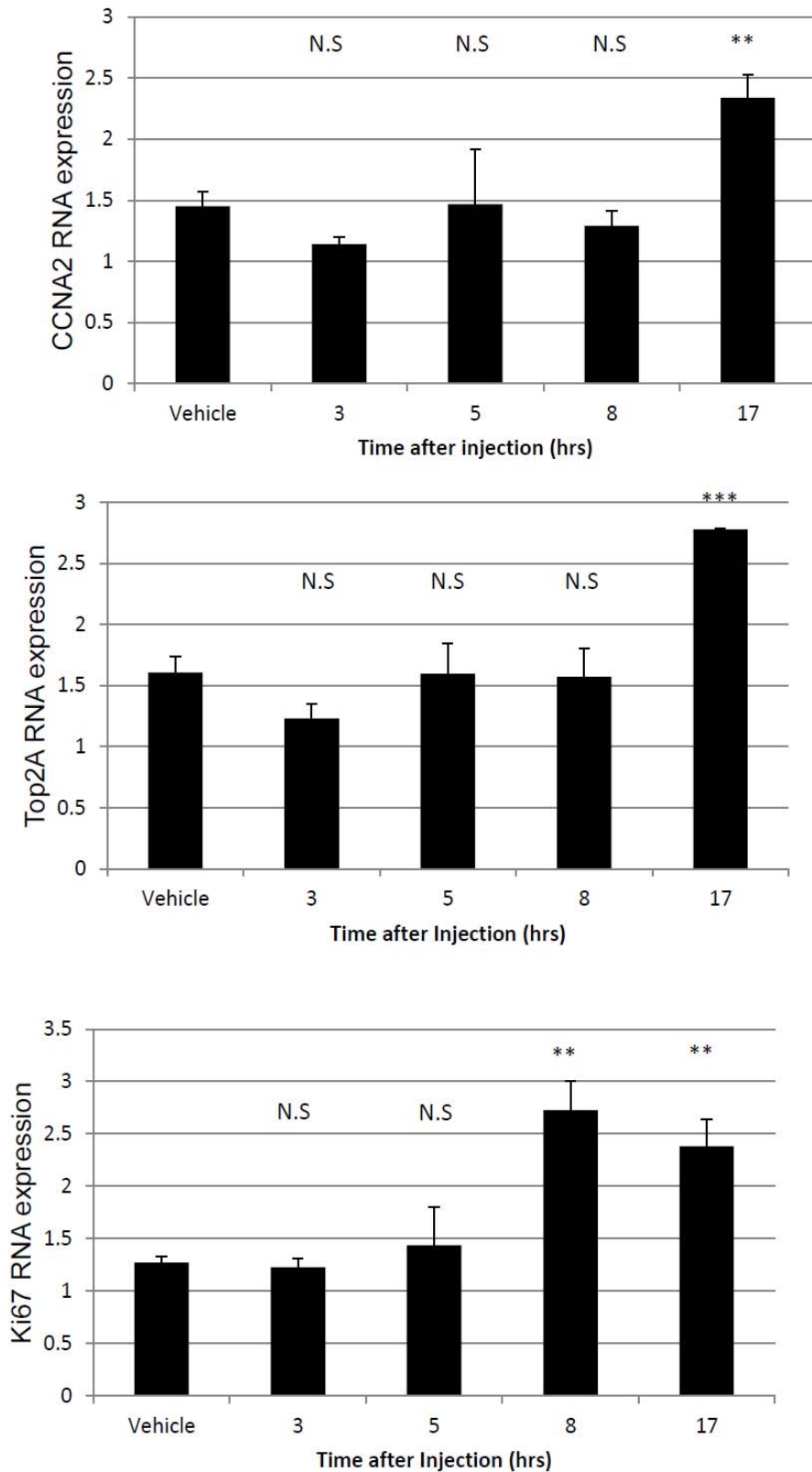


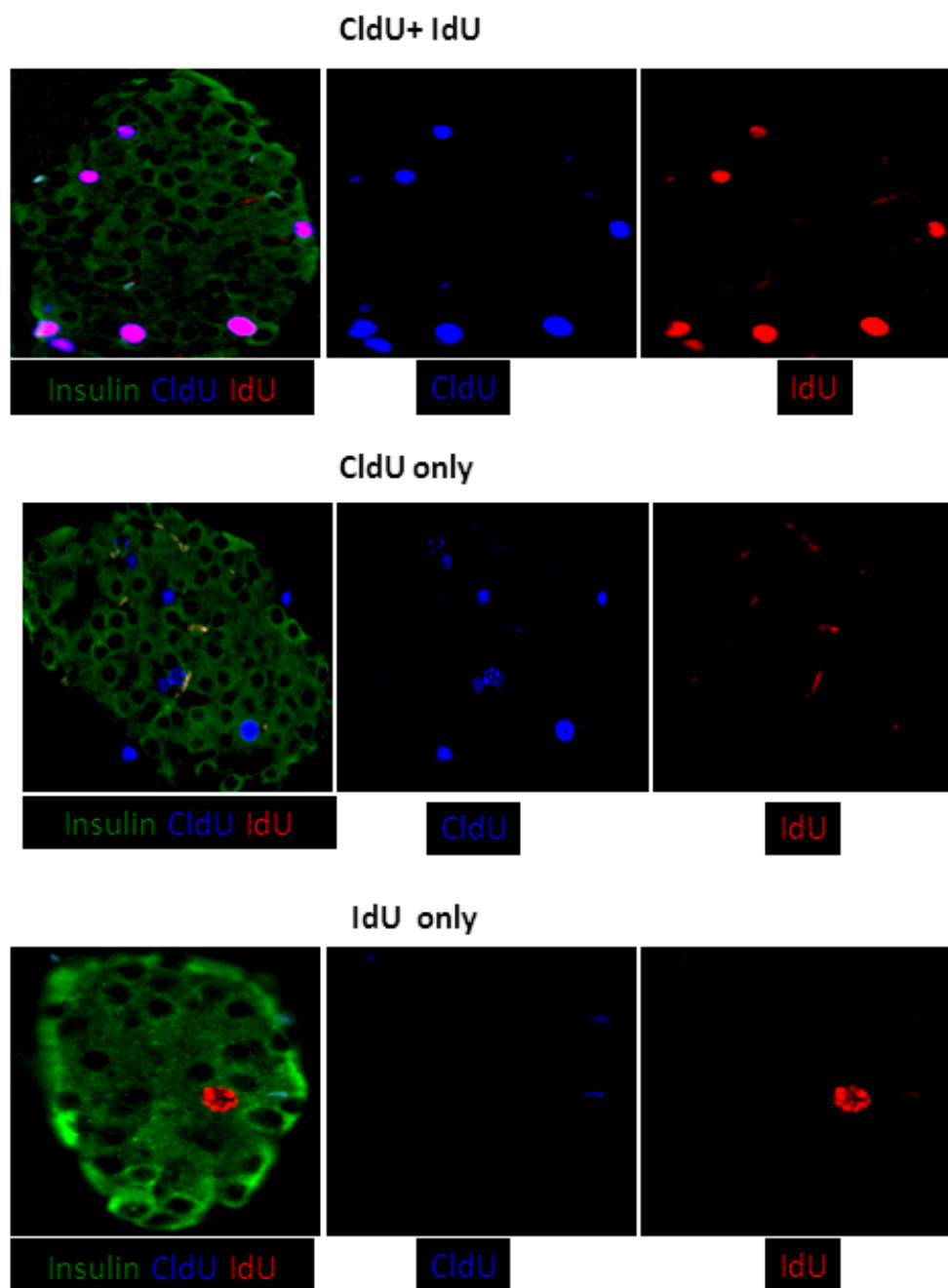
SUPPLEMENTARY DATA

Supplementary Figure 1. qRT-PCR to measure mRNA expression level of the cell cycle markers CCNA2, TOP2A and Ki67. Islets were prepared from mice sacrificed at the indicated time points after administration of GKA.



SUPPLEMENTARY DATA

Supplementary Figure 2. Specificity of immunostaining for IdU and CldU. Co-staining on sections of islets from mice that were injected with one drug or both, indicating specificity of antibodies for their target epitope.



SUPPLEMENTARY DATA

Supplementary Figure 3. Control for GFP staining. FACS analysis of dissociated islet cells from 4 week old CyclinB1-GFP mice (n=3 mice, pooled), and wild-type mice (n=3 mice, pooled), stained for GFP. Wild type islet cells show no staining, proving specificity of GFP immunostaining.

