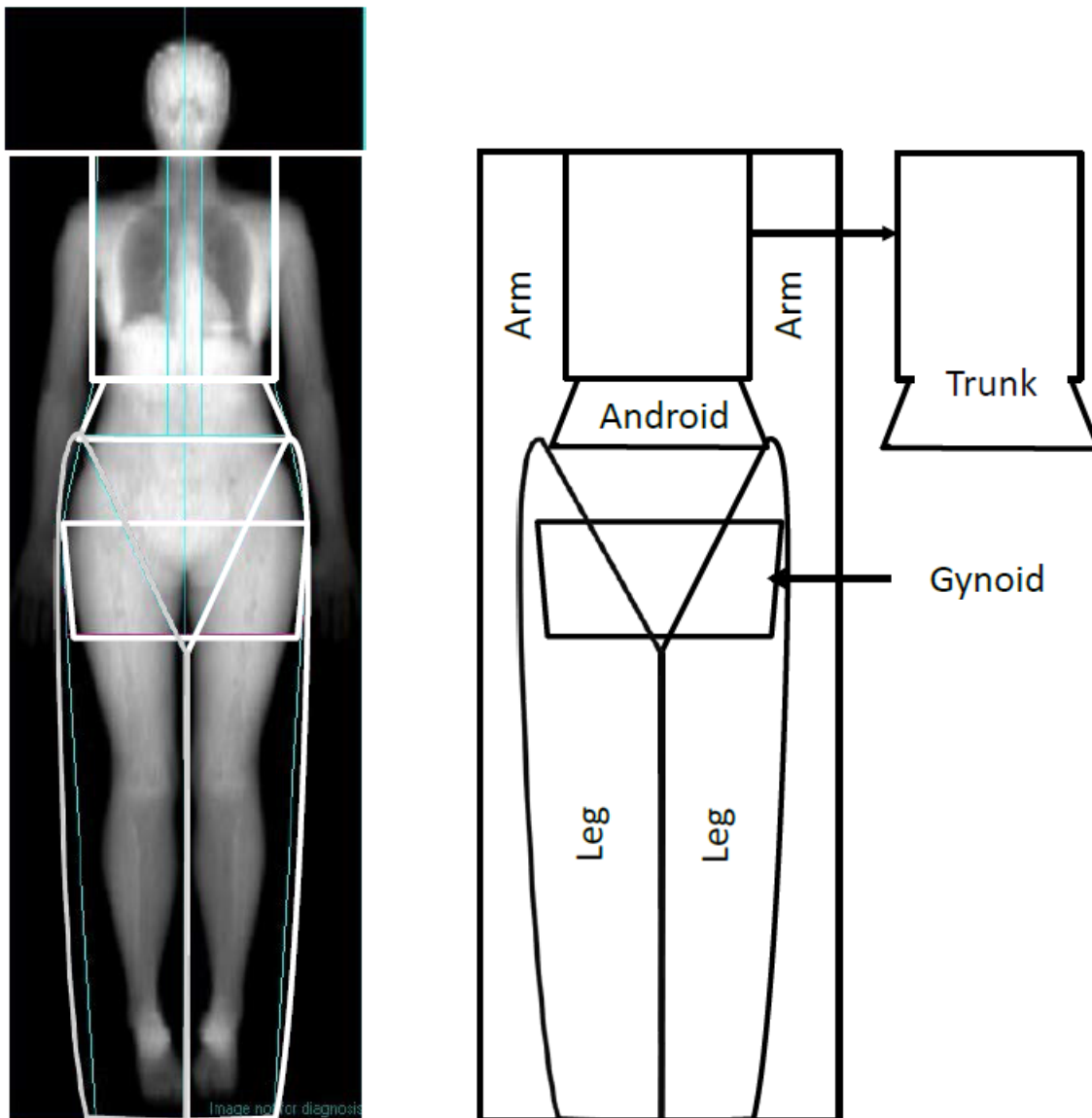


## SUPPLEMENTARY DATA

**Supplementary Table 1.** SNPs included in the genetic risk scores, with the study in which they were identified or implicated in insulin secretion or resistance. The risk allele for each of these SNPs is also shown. Where the lead SNP was not available, the proxy used is listed for each study. Where a suitable proxy was not available, the SNP is marked “x”.

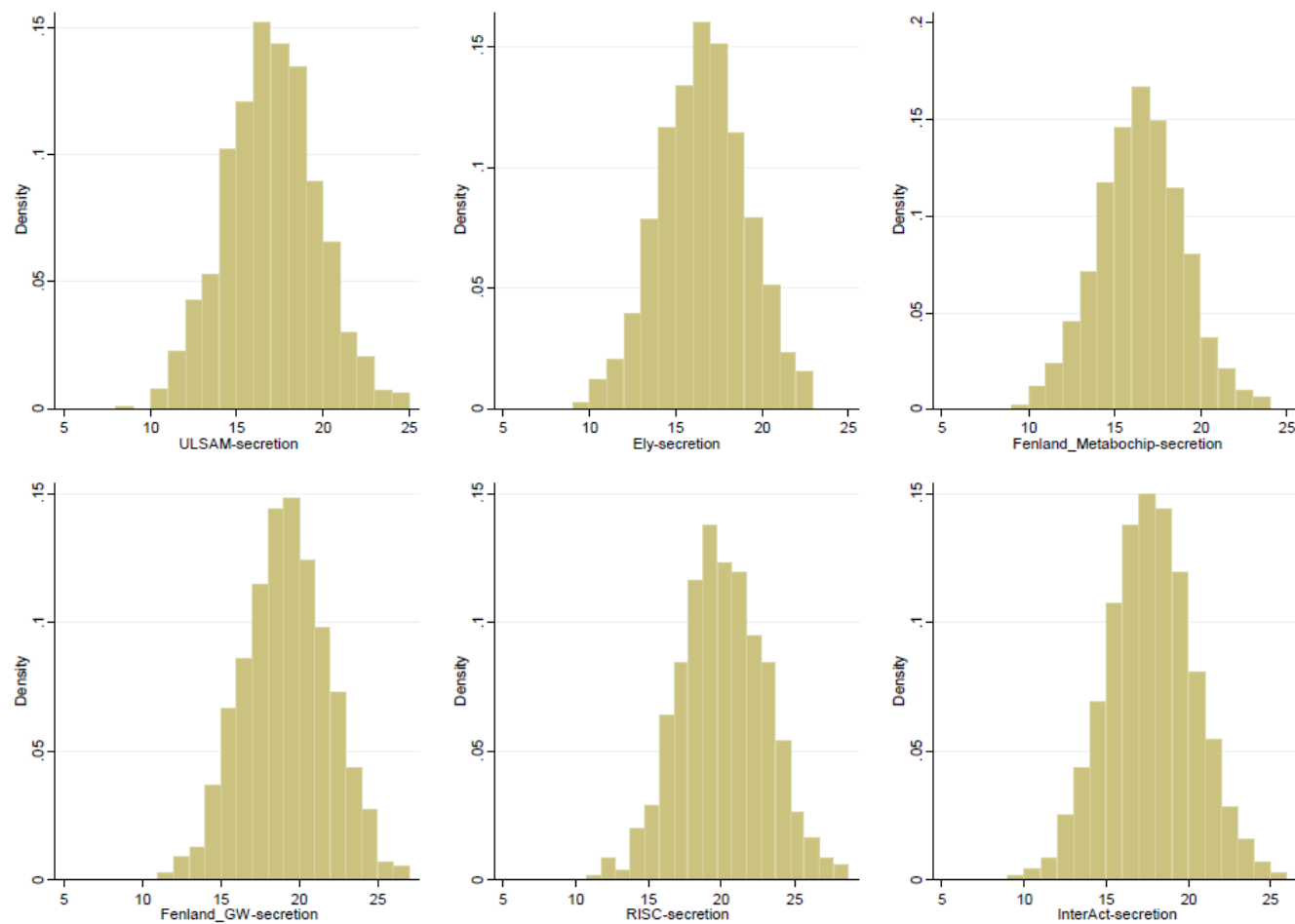
**Supplementary Figure 1.** Regional compartment definition in the Fenland DXA data. The trunk region extends from the chin to the top of the pelvis. The leg regions are defined by a cut across the femoral neck, not touching the pelvis. The arm regions are defined by a cut placed as close to the body as possible. The android region is a quadrilateral box, where the lower boundary is the pelvis, the lateral boundaries are the arm cuts and the upper boundary is above the pelvis cut by 20% of the distance between the pelvis and neck cuts. The gynoid region is another quadrilateral box where the lateral boundaries are the arm cuts. The upper boundary is below the pelvis cut by 1.5 x the height of the android region. The Lower boundary is below the upper boundary by 2 x the height of the android region.



SUPPLEMENTARY DATA

**Supplementary Figure 2.** Histograms of genetic risk scores from each study for a) insulin secretion and b) insulin resistance scores.

**a**



# SUPPLEMENTARY DATA

**b**

