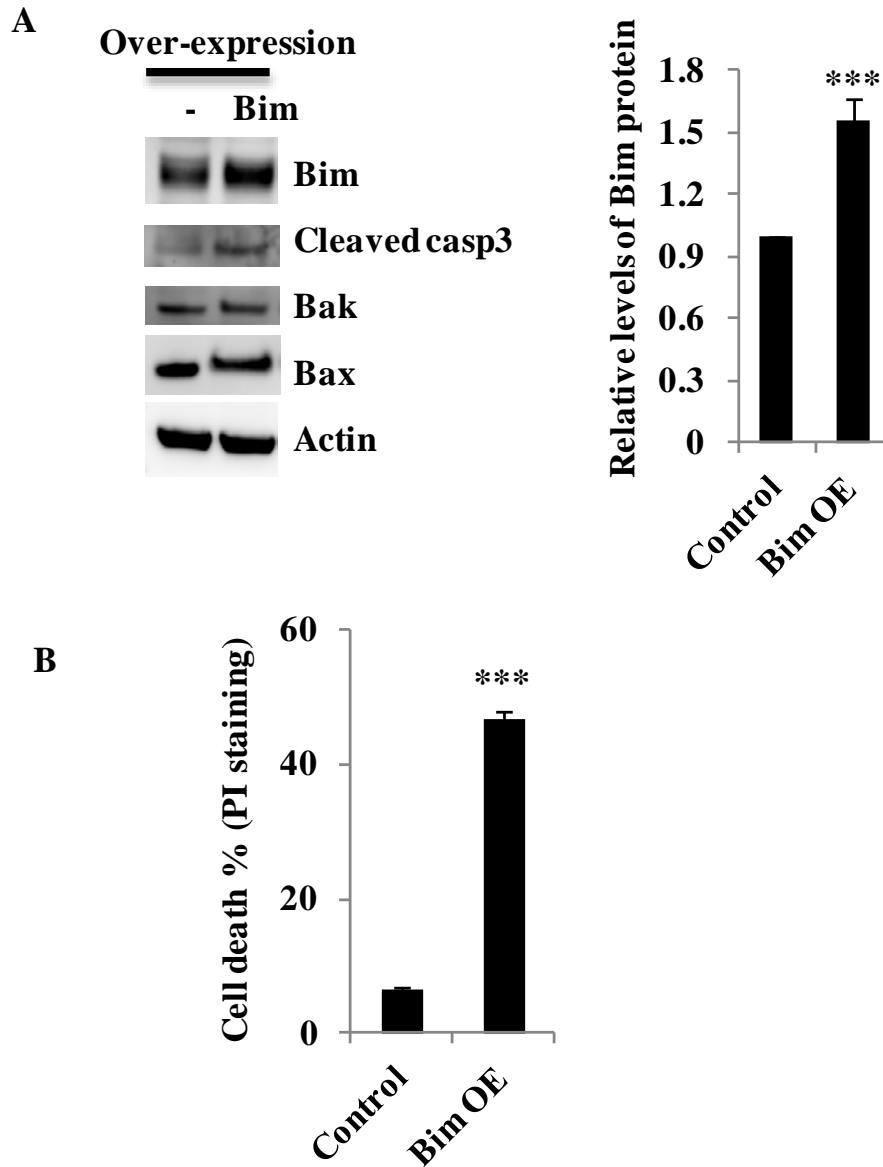


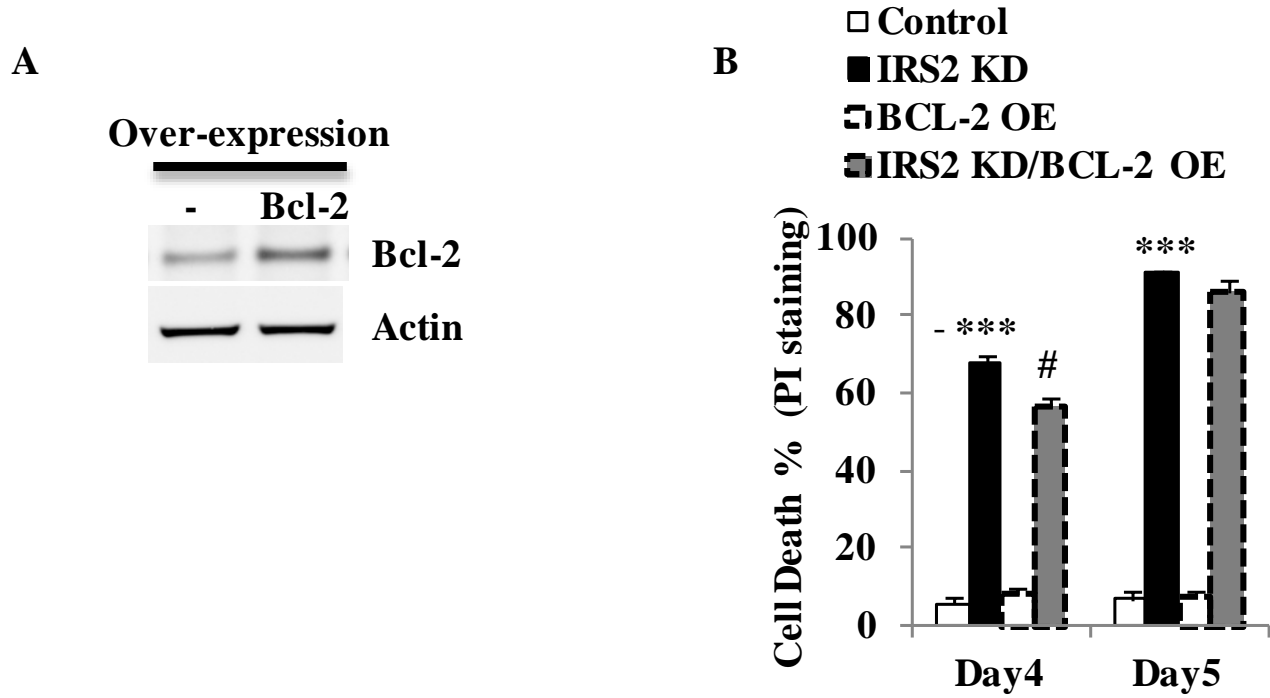
SUPPLEMENTARY DATA

Supplementary Figure 1. Over-expression of Bim induces β -cell apoptosis. *A:* Over-expression of Bim in MIN6 cells. 2 days after infection with Bim retrovirus in MIN6 cells, the protein levels of BIM were assayed by western blot. $***P < 0.001$ vs. control cells. *B:* Bim over-expression induced cell death. 2 days after infection with Bim retrovirus, cell death was determined by PI-staining in MIN6 cells. $***P < 0.001$ vs. control cells. Values are mean \pm SEM.



SUPPLEMENTARY DATA

Supplementary Figure 2. Bcl-2 over-expression inhibits IRS2KD-induced cell death. *A:* The expression levels of Bcl-2 in MIN6 cells. 2 days after MIN6 cells were infected with Bcl-2 retrovirus, the protein levels of BCL-2 were assayed by western blot. *B:* Cell death was determined by PI-staining in IRS2 KD/Bcl-xL OE cells. ***P<0.001 compared to control group. #P<0.05 compared to IRS2 KD group. Values are mean ± SEM.



SUPPLEMENTARY DATA

Supplementary Figure 3. Bim expression was undetectable in α cells in mouse islets. Morphology of adult mouse islets after 18 weeks on a normal diet; anti-Bim and anti-glucagon antibodies were used to stain α cells.

