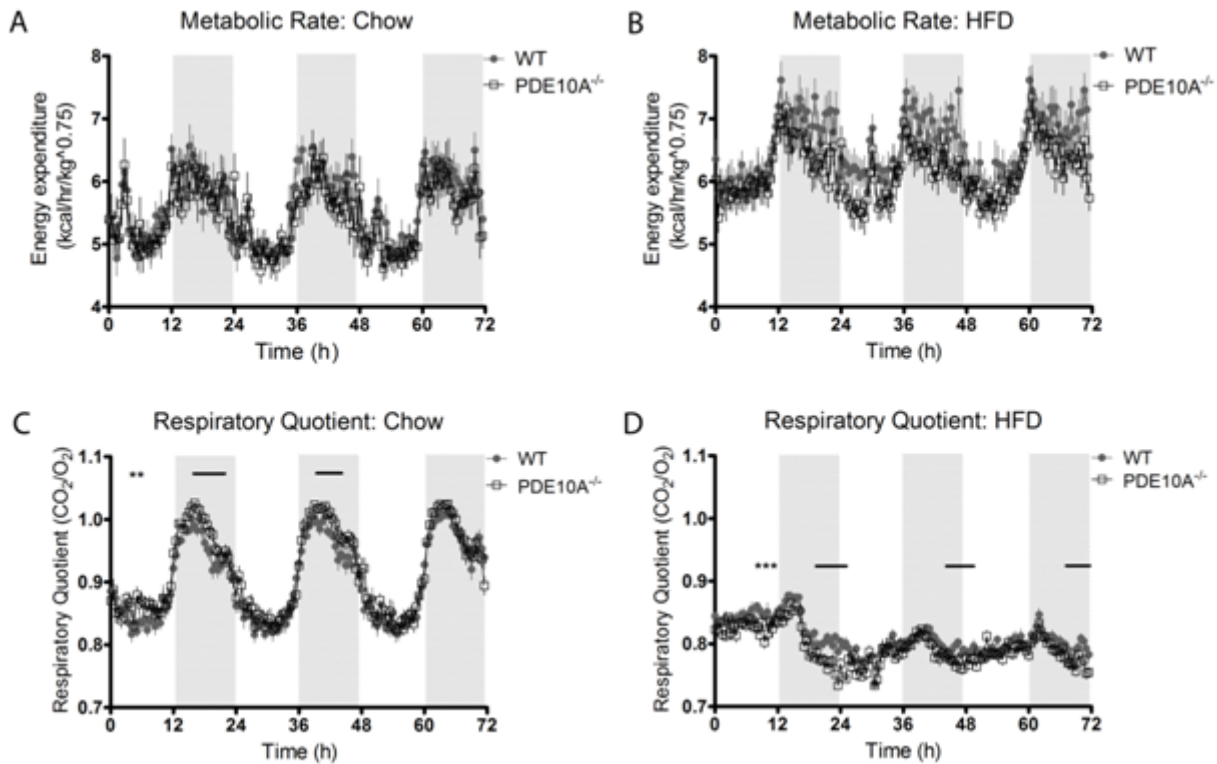


SUPPLEMENTARY DATA

Supplementary Figure 1. Respiratory quotient was significantly reduced in *PDE10A*^{-/-} mice when fed a HFD without changes in energy expenditure. Metabolic rate was measured in weight matched animals after acclimation to OxyMax chambers and after 2 days of acclimation to the newly introduced diet. Data are expressed as calories generated per hour on chow (A) or HFD (B). Respiratory quotient was calculated as the ratio of V_{O_2} and V_{CO_2} measured continuously and expressed as 30 minute bins while mice were fed chow (C) and HFD (D). Shaded areas indicate active period. * and lines indicate $p < 0.05$ vs. *WT* control



SUPPLEMENTARY DATA

Supplementary Figure 2. Effect of vehicle (black circles) and 10 mg/kg THPP-6 (red circles) on hourly food intake. Data are shown for baseline, day 1, day 2, and the last 4 days of dosing at steady state. Baseline and THPP-6 treatment periods are indicated by shaded areas.

