

SUPPLEMENTARY DATA

Supplementary Table 1. Islet number in each group with different insulinitis score.

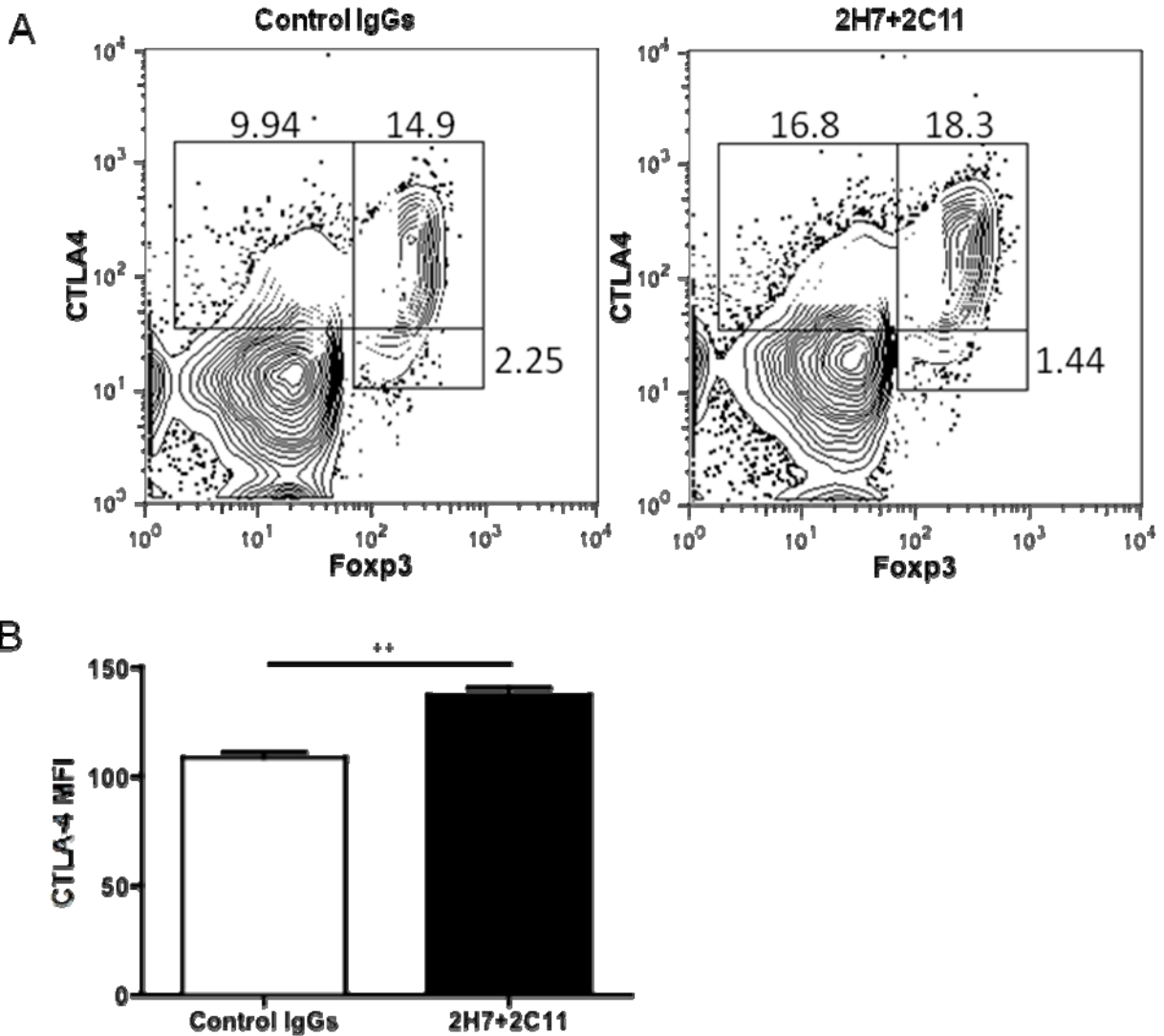
Insulinitis score		Grade 0	Grade 1	Grade 2	Grade 3
15 days	mIgG + H-IgG	18	8	11	16
	Anti-CD20 + anti-CD3	26	11	14	7
1 month	mIgG + H-IgG	30	17	22	19
	Anti-CD20 + anti-CD3	59	27	13	18
3 month	mIgG + H-IgG	73	34	34	30
	Anti-CD20 + anti-CD3	88	29	38	50

Supplementary Table 2. Primer sets for qPCR.

Primer name	Primer sequence
IL-10-F	GCAGTCCGCAGCTCTAGG
IL-10-R	TGCTATGCTGCCTGCTCTTA
IL-27-F	GAGG TTCAGGGCTATGTCCA
IL-27-R	GTGGTAGCGAGGAAGCAGAG
Stat3-F	TGTTGTACCTCAGGGGCTCT
Stat3-R	TTGGAATCTGAGTGCAGTGG
Stat4-F	CATCCCTGAAAACCCTCTGA
Stat4-R	AGCACAGCATATGCACTTGG
Gata3-F	GTGCCCCGAGTACAGCTCCGGA
Gata3-R	ACCCATGGCGGTGACCATGCTG
C-Maf-F	GAGGAGGTGATCCGACTGAA
C-Maf-R	TCTCCTGCTTGAGGTGGTCT
AhR-F	AGCAGCTGTGTCAGATGGTG
AhR-R	CTGAGCAGTCCCCTGTAAGC

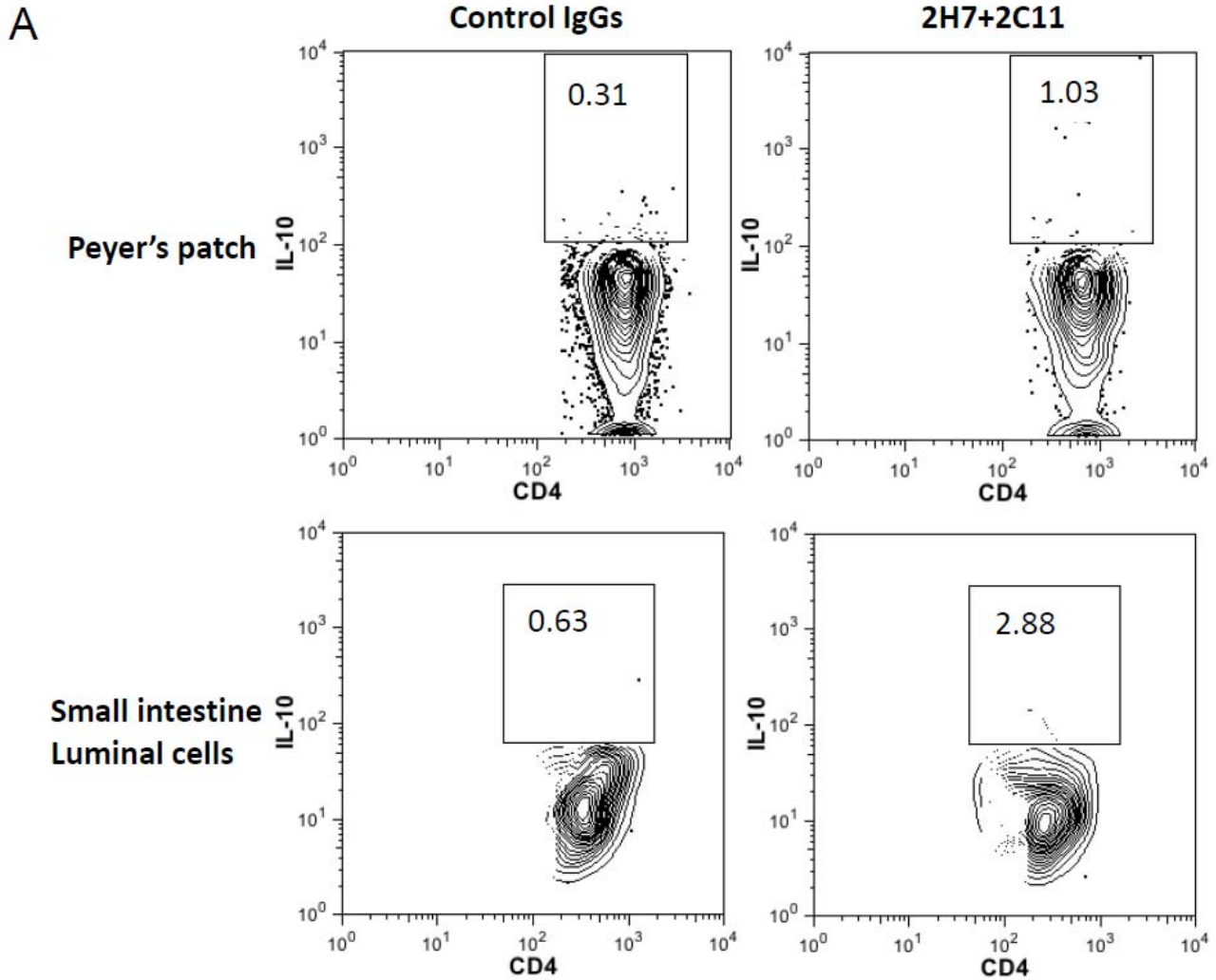
SUPPLEMENTARY DATA

Supplementary Figure 1. Anti-hCD20/oral anti-CD3 treatment promotes CTLA4⁺ Treg. A) Foxp3 and CTLA4 expression were detected by flow cytometry using a Foxp3 detection kit in splenic CD4⁺ T cells of hCD20/NOD mice treated with anti-hCD20/oral anti-CD3 or control IgGs. B) Mean fluorescent intensity of CTLA-4 was measured in splenic CD4⁺CTLA4⁺ T cells of hCD20/NOD mice treated with anti-hCD20/oral anti-CD3 or control IgGs (n=3 each group). The statistical analysis was performed with Student's t-test. ** P<0.01.



SUPPLEMENTARY DATA

Supplementary Figure 2. A) Anti-hCD20/oral anti-CD3 treatment induces IL-10-producing CD4⁺ T cells in both Peyer's patches and small intestine luminal cells. Human CD20 transgenic NOD mice were treated with control IgGs, or anti-hCD20/oral anti-CD3, respectively. Peyer's patches and small intestine luminal cells were collected to analyze IL-10-producing CD4 T cells by intracellular cytokine staining. B) IL-10-producing CD4 T cells were detected in spleens from anti-hCD20/oral anti-CD3 or control IgG treated mice by intracellular cytokine staining.



SUPPLEMENTARY DATA

B

