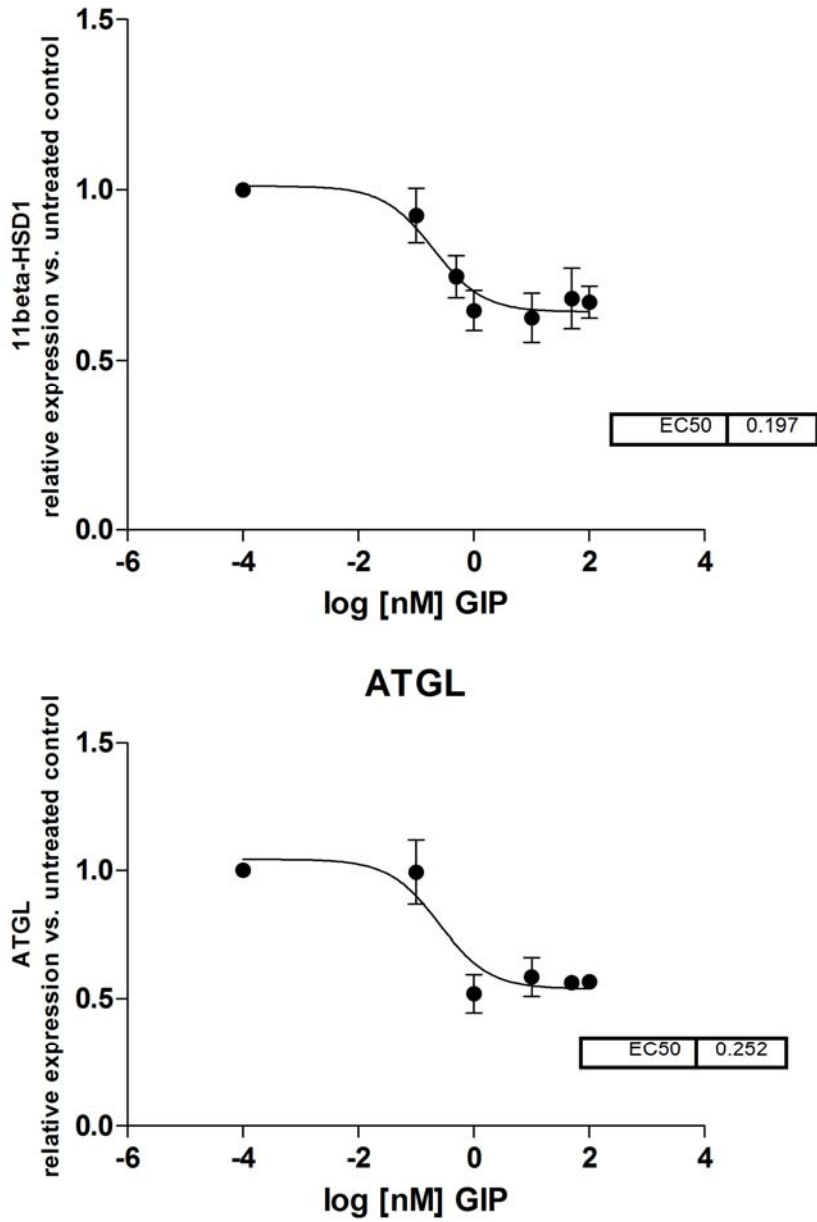


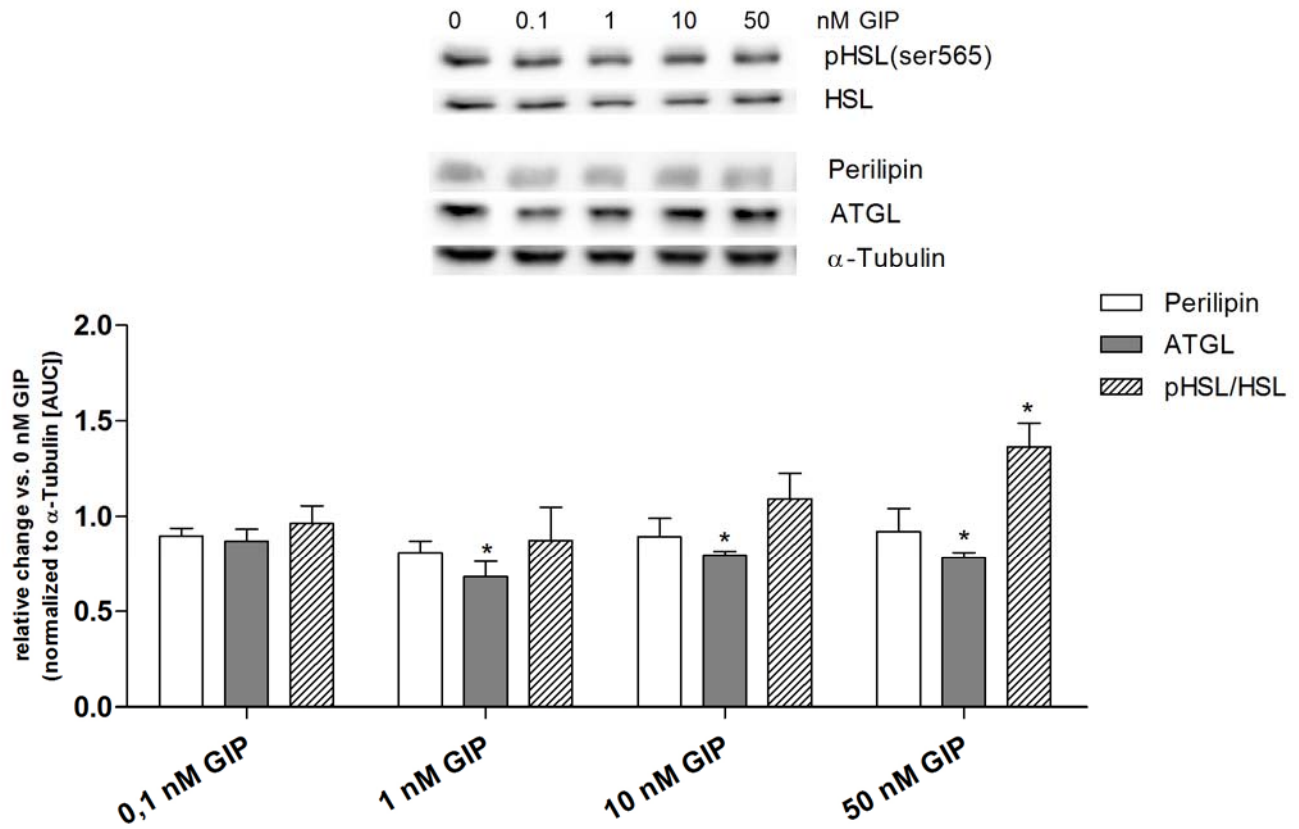
SUPPLEMENTARY DATA

Supplementary Figure 1. Effect of different GIP-concentration on the relative expression of 11beta-HSD1 and ATGL vs. untreated control. Differentiated 3T3-L1 cells were treated with 0, 0.1 nmol/l, 0.5 nmol/L, 1 nmol/L, 10 nmol/L and 50 nmol/L GIP for 120 min. Data are shown as Mean \pm SEM.



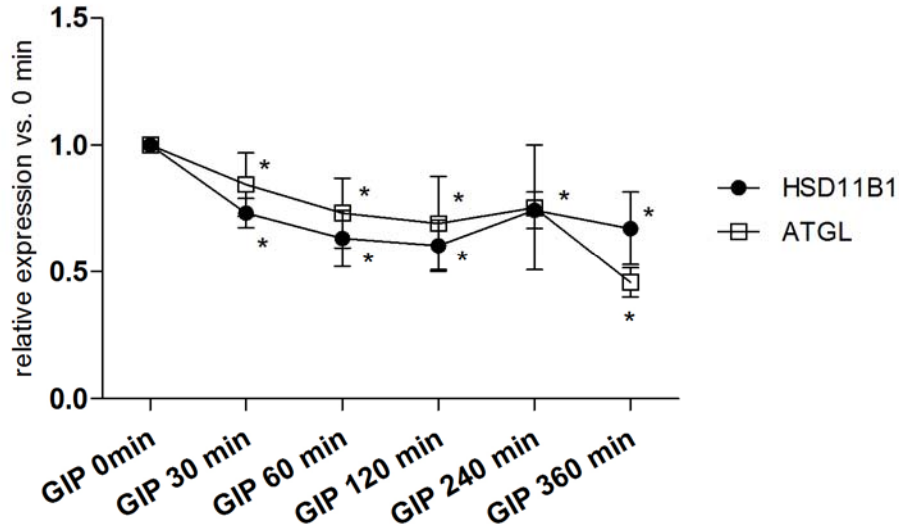
SUPPLEMENTARY DATA

Supplementary Figure 2. Effect of different GIP-concentration on ATGL, Perilipin A, pHSL(Ser565), HSL protein. α -Tubulin was used for normalization. Differentiated 3T3-L1 cells were treated with 0, 0.1 nmol/L, 0.5 nmol/L, 1 nmol/L, 10 nmol/L and 50 nmol/L GIP for 120 min. Data are shown as Mean \pm SEM; * p <0.05. Blots represent one exemplary experiment.



SUPPLEMENTARY DATA

Supplementary Figure 3. Time-dependent effect of 1 nmol/L GIP on 11beta-HSD1 and ATGL mRNA expression vs. untreated control. Differentiated 3T3-L1 cells were treated with 1 nmol/L GIP and harvested after 0, 30, 60, 120, 240 and 360 min. Data are shown as Mean \pm SEM; * p <0.05.



Supplementary Figure 4. Time-dependent effect of 1 nmol/L GIP on ATGL protein vs. untreated control. α -Tubulin was used for normalization. Differentiated 3T3-L1 cells were treated with 1 nmol/L GIP and harvested after 0, 30, 60, 120, 240 and 360 min. Data are shown as Mean \pm SEM; * p <0.05. Blots represent one exemplary experiment.

