

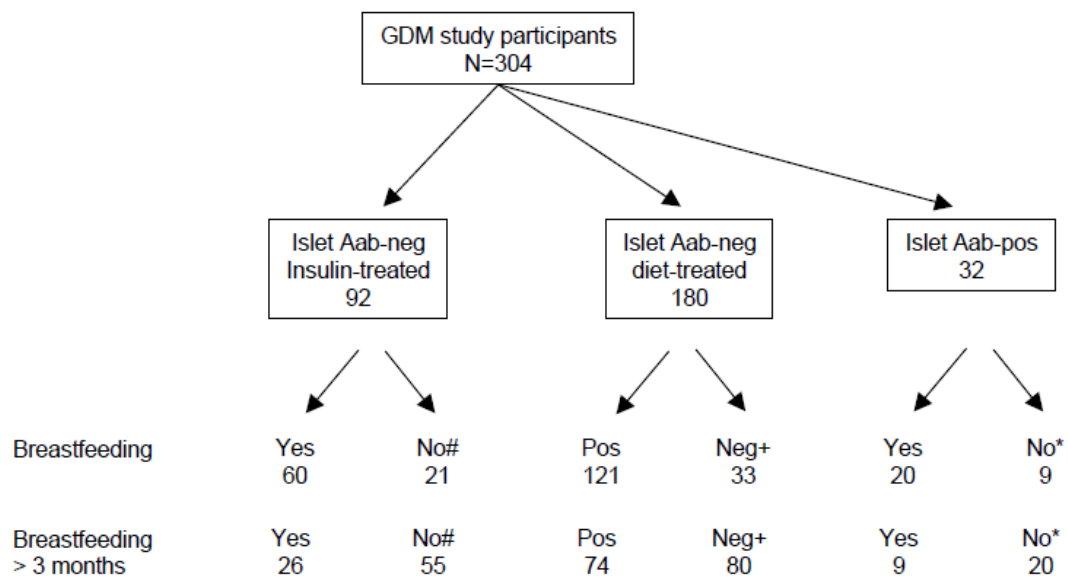
SUPPLEMENTARY DATA

**Supplementary Table 1.**

Stratification variable	Hazards Ratio (95%CI)*	P value
GDM treatment: diet	0.46 (0.25-0.85)	0.014
insulin	0.81 (0.5-1.3)	0.4
BMI: <30	0.56 (0.35-0.9)	0.015
>30	0.64 (0.33-1.2)	0.18

\*Hazards ratio is unadjusted postpartum diabetes risk of women who breastfed >3 months as compared to women who breastfed <3 months and is estimated by Cox proportional hazards model.

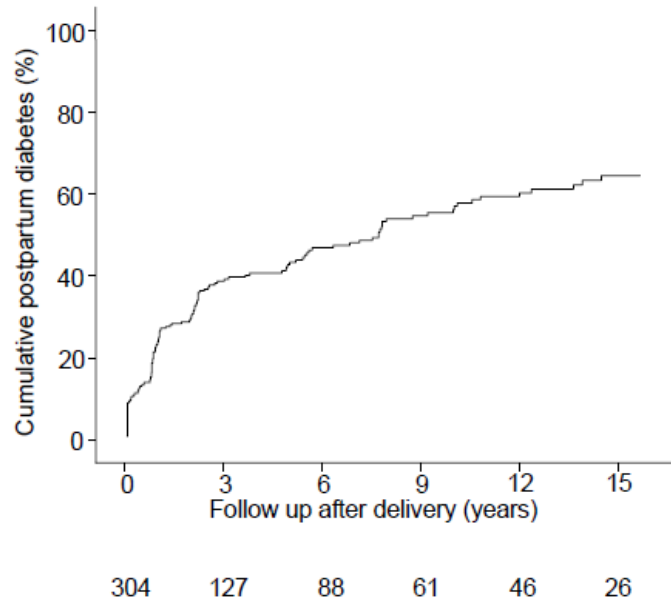
**Supplementary Figure 1. Flow chart of study participants**



Breastfeeding unknown: # n=11, + n=26, \* n=3

SUPPLEMENTARY DATA

**Supplementary Figure 2.** Cumulative life-table risk of postpartum diabetes in 304 women with gestational diabetes mellitus followed prospectively from delivery. Numbers below the graph indicate the number of subjects at each follow-up.



**Supplementary Figure 3.** BMI (Mean, 95%CI) in early pregnancy (open circles) and at the last follow-up visit postpartum (filled circles) in relation to any breastfeeding duration.

