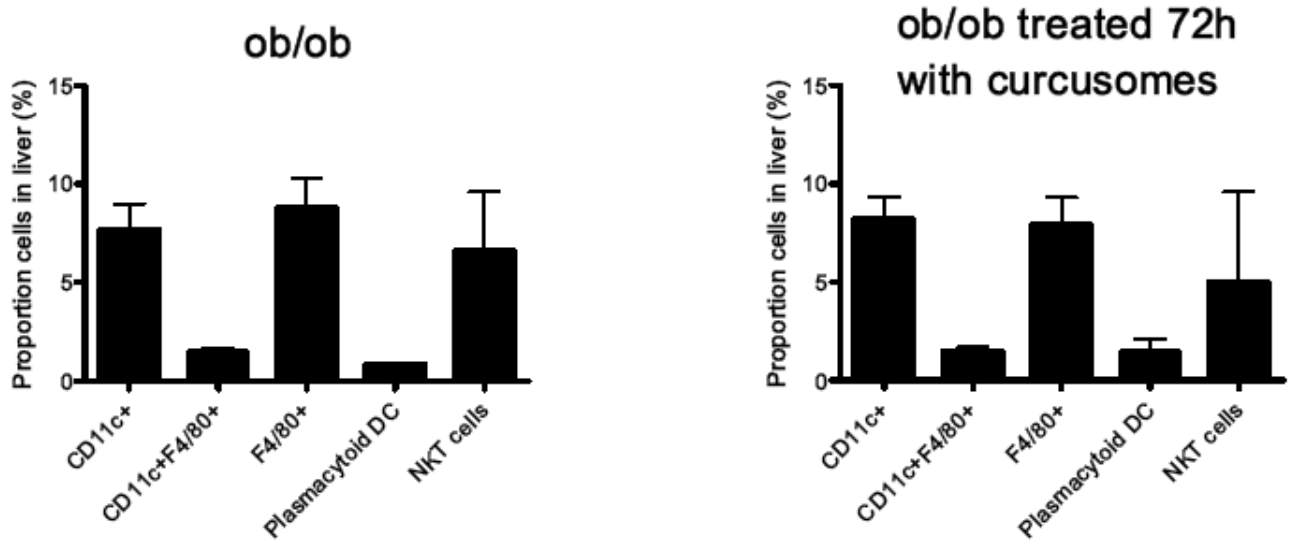


SUPPLEMENTARY DATA

Supplementary Figure 1. Ob/ob mice were injected ip with curcumes, and gradient-purified liver cells were harvested at 24 h and 72 h and stained for surface markers of leukocyte subsets and analyzed by flow cytometry. Shown are the percentages of CD11c+ DC, CD11c+ F4/80+ Tip-DC, F4/80+ macrophages, B220+, PDCA-1+ plasmacytoid DC and NKT cells. Data show mean \pm SEM of 2 individual mice.



SUPPLEMENTARY DATA

Supplementary Figure 2. F4/80+ cells purified from adipose tissue of ob/ob mice were cultured in chamber slides for 1 h. Cells were stained with DAPI (cyan), F4/80 (green), CD11c (blue) and NF-kB subunits p52, RelB, c-Rel, p50 and RelA, (red) and images acquired by immunofluorescence. Objective 40x. Each row shows staining with a different NF-kB subunit.

