

Figure S1. Western blot of kidney nuclear extracts showing no FXR expression in FXR KO mice. The equal loading was examined by Ponceau S staining on the membrane after the transfer.

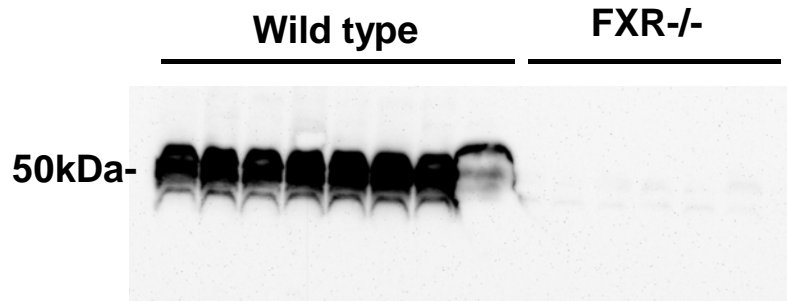
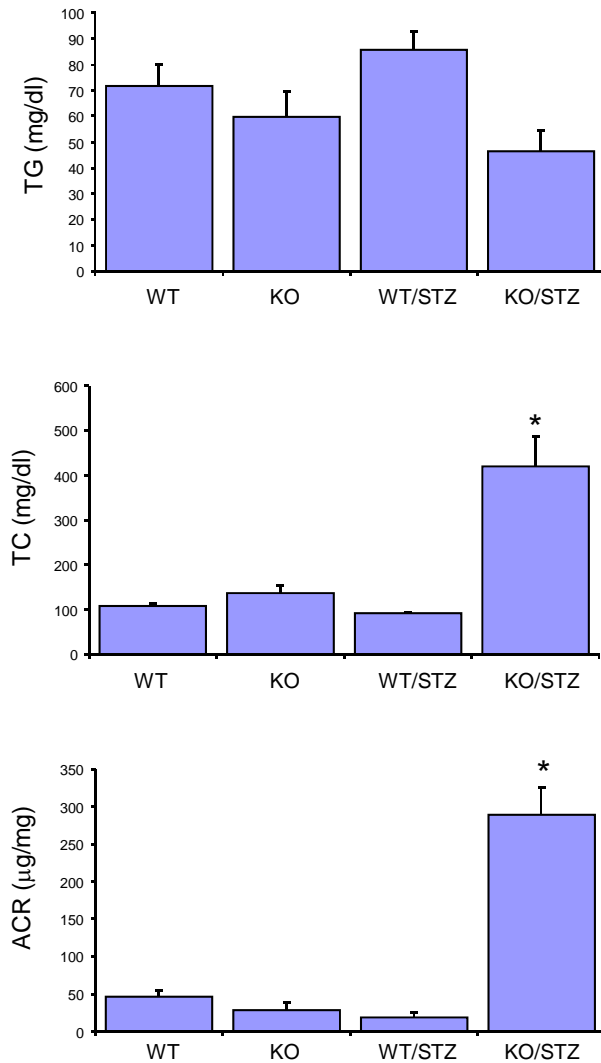


Figure S2. 8-wk old male C57BL/6 mice and FXR KO mice are induced diabetes with 50mpk STZ injection for 5 days and maintained on chow diet for 12 weeks.

A. Blood lipid and albuminuria. \*  $p < 0.05$  vs KO or WT/STZ (n=6).

A



- B.** Diabetic FXR KO mice show severe mesangial expansion by PAS staining.  
**C.** Diabetic FXR KO mice have increased tubulointerstitial fibrosis shown by collagen III staining.  
**D.** Diabetic FXR KO mice have increased renal lipid accumulation by oil-red-O staining

