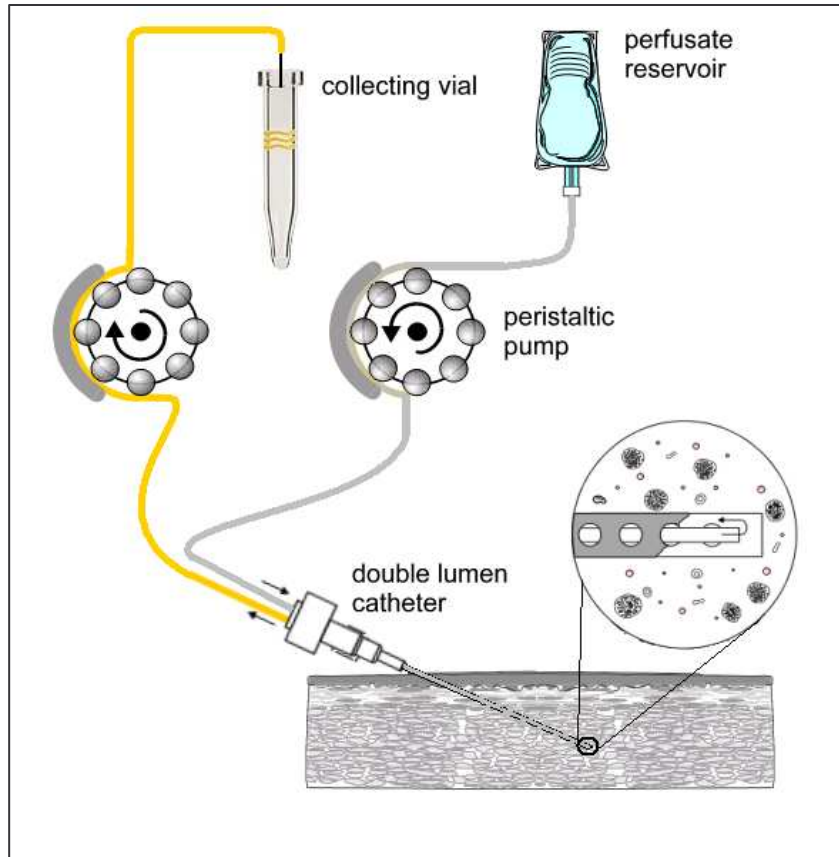


# Open-flow microperfusion technique



Schematic representation of sampling system.

Open-flow microperfusion is based on a macroscopic perforated double lumen catheter, which permits unrestricted exchange of solutes between the perfusion medium and interstitial fluid. Double-lumen catheter is inserted into adipose tissue or skeletal muscle and perfused constantly. Partial equilibration between perfusion fluid and interstitial fluid occurs through macroscopic perforations of the outer part of the catheter. Transport of perfusion fluid (grey tube) and dialysate (yellow tube) is established by a multichannel peristaltic pump.