

SUPPLEMENTARY DATA

Supplementary Table S1. Fasting plasma glucose

	DAPA + SAXA + MET (n = 324)	INS + MET (n = 319)
FPG, mg/dL		
Baseline mean ± SD	n = 324 189.5 ± 55.5	n = 319 188.6 ± 53.8
Week 24 mean ± SD	n = 287 144.0 ± 37.4	n = 281 137.2 ± 43.2
Mean change from baseline ± SE	-45.8 ± 3.0	-52.7 ± 3.6
FPG, mmol/L		
Baseline mean ± SD	n = 324 10.5 ± 3.1	n = 319 10.5 ± 3.0
Week 24 mean ± SD	n = 298 8.0 ± 2.1	n = 289 7.6 ± 2.4
Mean change from baseline ± SE	-2.5 ± 0.2	-2.9 ± 0.2

DAPA, dapagliflozin; FPG, fasting plasma glucose; INS, insulin; MET, metformin; SAXA, saxagliptin; SD, standard deviation; SE, standard error.

SUPPLEMENTARY DATA

Supplementary Table S2. Vital signs variables

Vital signs variable	DAPA + SAXA + MET (n = 324)	INS + MET (n = 319)
Systolic blood pressure, mmHg		
Baseline mean ± SD	n = 324 129.1 ± 14.6	n = 319 129.4 ± 14.3
Week 24 mean ± SD	n = 298 127.5 ± 14.9	n = 289 129.2 ± 14.3
Mean change from baseline ± SD	-1.6 ± 13.2	-0.6 ± 13.3
Diastolic blood pressure, mmHg		
Baseline mean ± SD	n = 324 78.1 ± 9.0	n = 319 78.0 ± 8.6
Week 24 mean ± SD	n = 298 77.2 ± 8.7	n = 289 77.6 ± 8.6
Mean change from baseline ± SD	-0.8 ± 7.6	-0.5 ± 7.1
Heart rate, beats/min		
Baseline mean ± SD	n = 324 76.1 ± 9.9	n = 319 74.6 ± 9.9
Week 24 mean ± SD	n = 298 75.1 ± 9.6	n = 289 75.0 ± 10.2
Mean change from baseline ± SD	-0.8 ± 7.6	0.5 ± 8.5

Patients were sitting for all measures.

DAPA, dapagliflozin; INS, insulin; MET, metformin; SAXA, saxagliptin; SD, standard deviation.

SUPPLEMENTARY DATA

Supplementary Table S3. Lipids

Parameter	DAPA + SAXA + MET (n = 324)	INS + ME (n = 319)
Cholesterol (mmol/L)		
Baseline mean ± SD	n = 324 4.65 ± 1.20	n = 319 4.66 ± 1.09
Week 24 mean ± SD	n = 318 4.73 ± 1.18	n = 301 4.60 ± 1.05
Mean change from baseline ± SE (95% CI)	0.09 ± 0.06 (–0.02, 0.19)	–0.07 ± 0.05 (–0.17, 0.03)
HDL cholesterol (mmol/L)		
Baseline mean ± SD	n = 324 1.15 ± 0.34	n = 319 1.56 ± 0.32
Week 24 mean ± SD	n = 318 1.19 ± 0.35	n = 301 1.17 ± 0.29
Mean change from baseline ± SE (95% CI)	0.03 ± 0.01 (0.01, 0.10)	0.02 ± 0.01 (0.0, 0.04)
LDL cholesterol (mmol/L)		
Baseline mean ± SD	n = 309 2.53 ± 0.88	n = 308 2.54 ± 0.86
Week 24 mean ± SD	n = 309 2.59 ± 0.95	n = 298 2.59 ± 0.88
Mean change from baseline ± SE (95% CI)	0.10 ± 0.05 (0.01, 0.19)	0.05 ± 0.04 (–0.03, 0.13)
Triglycerides (mmol/L)		
Baseline mean ± SD	n = 324 2.39 ± 3.02	n = 319 2.22 ± 1.77
Week 24 mean ± SD	n = 318 2.23 ± 2.43	n = 301 1.89 ± 1.32
Mean change from baseline ± SE (95% CI)	–0.17 ± 0.09 (–0.34, 0.01)	–0.34 ± 0.09 (–0.52, –0.15)

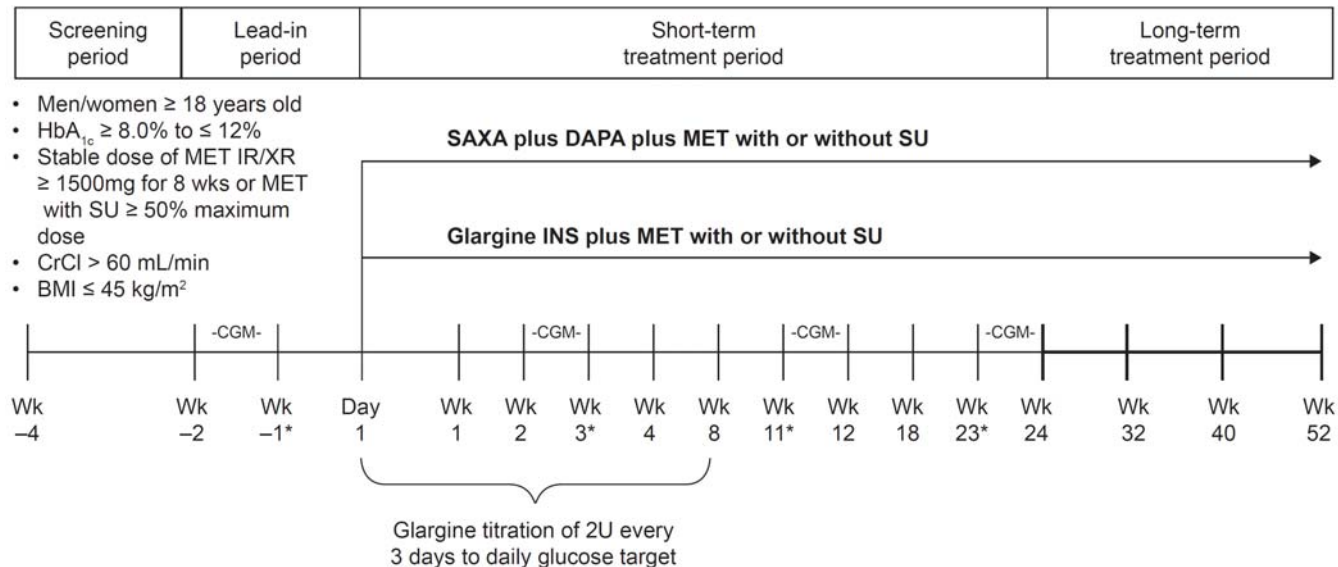
CI, confidence interval; DAPA, dapagliflozin; INS, insulin; MET, metformin; SAXA, saxagliptin; SD, standard deviation; SE, standard error.

SUPPLEMENTARY DATA

Supplementary Figure S1. Patient flow diagram.

*Additional visits only for patients participating in CGM sub-study.

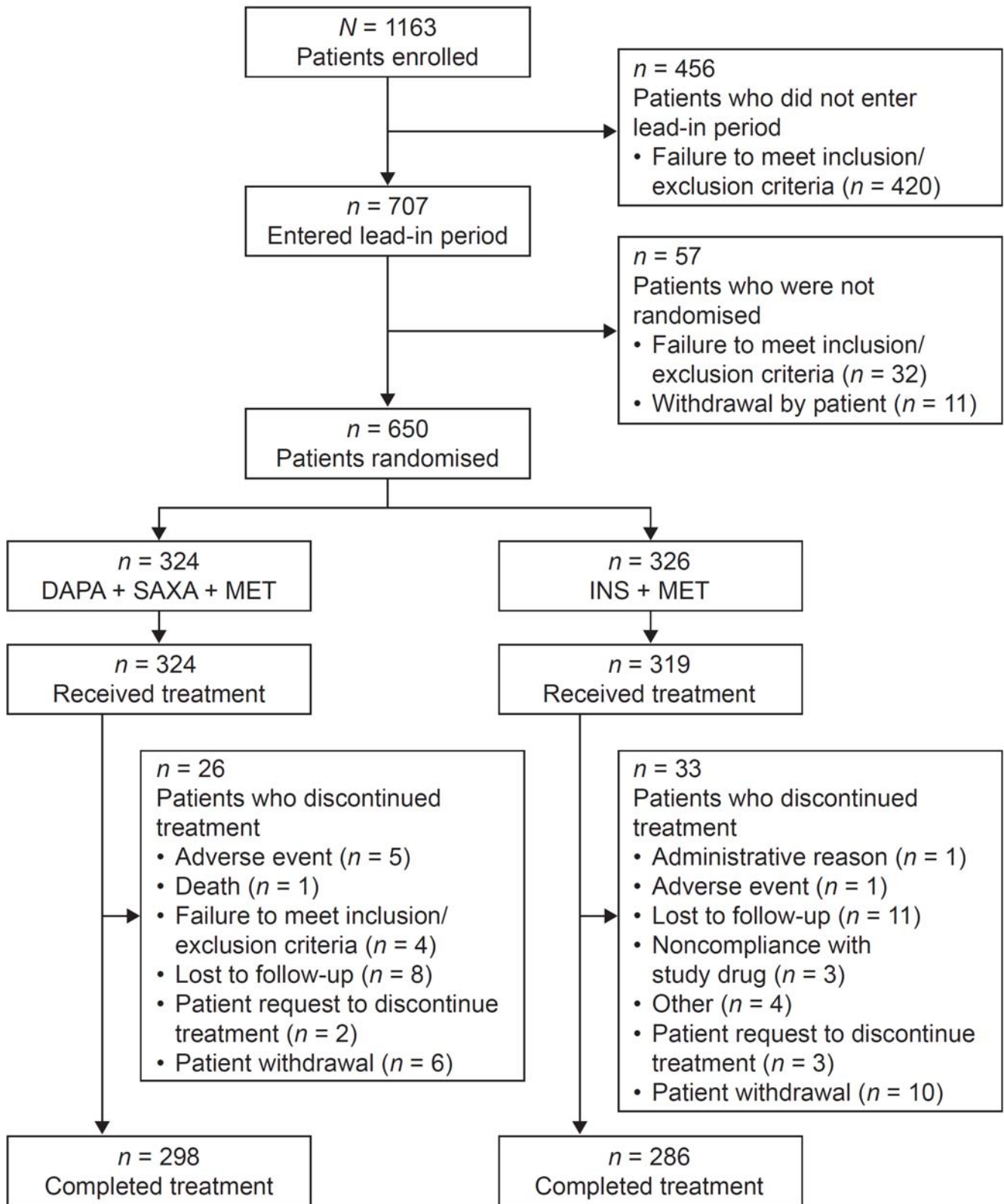
BMI, body mass index; CGM, continuous glucose monitoring; CrCl, creatinine clearance; DAPA, dapagliflozin; INS, insulin; IR, immediate release; MET, metformin; SAXA, saxagliptin; SU, sulfonylurea; XR, extended release.



SUPPLEMENTARY DATA

Supplementary Figure S2—Patient flow diagram.

DAPA, dapagliflozin; INS, insulin; MET, metformin; SAXA, saxagliptin.



SUPPLEMENTARY DATA

Appendix. List of study investigators.

Center number	Investigator name and degree	Role	Address
0002	Gigi Lefebvre, MD	Principal Investigator	Meridien Research, 4751 66th St, Saint Petersburg, FL 33709, USA
	Martin Bialow, MD	Sub-Investigator	
	Laurie Schweppe, MS, FNP-BC	Sub-Investigator	
0003	David Ramstad, MD	Principal Investigator	Hampton Roads Center For Clinical Research, Suite 600, 1035 Champions Way, Suffolk, VA 23435, USA
0004	Brock Merritt, DO	Principal Investigator	Phoenix Clinical LLC, Suite 201, 7550 N 19th Ave., Phoenix, AZ 85021, USA
0005	Nabil Andrawis, MD	Principal Investigator	Manassas Clinical Research Center, Suite 107 and 108, 9001 Digges Rd, Manassas, VA 20110, USA
	Tabitha Moche, MSN, NP-C	Sub-Investigator	
0006	Christopher Case, MD	Principal Investigator	Jefferson City Medical Group (Jcmg), 1241 West Stadium Blvd, Jefferson City, MO, 65109, USA
	George Carr, MD	Sub-Investigator	
0007	Louis Chaykin, MD	Principal Investigator	Meridien Research, Suite 107, 8043 Cooper Creek Blvd, Bradenton, FL 34201, USA
	Michelle Mallitz, MD	Sub-Investigator	
	Laurie Schweppe, FNP	Sub-Investigator	
0002	Louis Chaykin, MD	Principal Investigator	Meridien Research, Suite 107, 8043 Cooper Creek Blvd, Bradenton, FL 34201, USA
	Michelle Mallitz, MD	Sub-Investigator	
0008	Conigliaro Jones, MD	Principal Investigator	TLM Medical Services LLC, Suite 5G, 2701 Middleburg Drive, Columbia, SC 29204, USA
0009	Robert Madder, MD	Principal Investigator	Heritage Valley Medical Group Inc., 500 Sharon Rd, Beaver, PA 15009, USA
	Brian Everhart, DO	Sub-Investigator	
	Timothy Jackson, MD	Sub-Investigator	
	Michael Oliver, MD	Sub-Investigator	
	William Rust, MD	Sub-Investigator	
0011	Syed Naseeruddin, MD	Principal Investigator	Central Florida Internists, 431 N. Kirkman Rd, Orlando, FL 32811, USA

SUPPLEMENTARY DATA

0012	Sanjay C Shah, MD	Sub-Investigator	Clinical Trials of Texas Inc., Suite 700, 7940 Floyd Curl Drive, San Antonio, TX 78229, USA
	Douglas Denham, DO	Principal Investigator	
0013	Ayoade Aworo, MSN, RN, FNP-BC	Sub-Investigator	Texas Center for Drug Development Inc., Suite 201, 6550 Mapleridge St, Houston, TX 77081, USA
	Jason Clay Miller, DO	Principal Investigator	
0014	Veronica Fragoso, MD	Sub-Investigator	Central Phoenix Medical Clinic/Radiant Research, 7600 N 15th St, Phoenix, AZ 85020, USA
	Ernie Riffer, MD	Principal Investigator	
0015	Larissa Harrison, BS	Sub-Investigator	Diseno y Planeacion en Investigacion Medica, SC Morelos 2203 Jalisco, Guadalajara 44130, Mexico
	Barbara Berry, MD	Sub-Investigator	
	Meghan Caldron, MD	Sub-Investigator	
	Barbara Lipschitz, MD	Sub-Investigator	
	Cesar Gonzalo Calvo Vargas, MD	Principal Investigator	
0016	Maria Del Pilar De La Peana Rodriguez, MD	Sub-Investigator	Unidad de Investigacion Clinica y Atencion Medica HEPA SC Pablo Neruda 3265 Piso 3-32, Colonia Prados Providencia Jalisco, Guadalajara 44670, Mexico
	Jorge Manuel Valdez Soto, MD	Sub-Investigator	
	Adriana Vazquez, MD	Sub-Investigator	
0017	Marisol Herrera Marmolejo, MD	Principal Investigator	Endocrine Associates, 5711 Almeda Rd, Houston, TX 77004, USA
	Gerardo Bueso, PA-C	Principal Investigator	
0018	Natalie Wenske, PA-C	Sub-Investigator	University of Florida College of Medicine, Jacksonville, Suite 200, Building 1, 4555 Emerson St, Jacksonville, FL 32207, USA
	Joe Chehade, MD	Principal Investigator	
	Meredith Smith, MD	Sub-Investigator	
0019	Kent Wehmeier	Sub-Investigator	University of Florida College of Medicine 300 653-1 West Eighth St, LRC 2nd Floor, L-14, Jacksonville, FL 32209, USA
	David Larsen, MD	Principal Investigator	
			Wasatch Clinical Research 4001 South 700 East , Salt Lake City, UT 84107, USA

SUPPLEMENTARY DATA

	Brian Rasmussen, MD	Former Principal Investigator	
	Gene Fuller, MD	Sub-Investigator	
	Timothy Young, MD	Sub-Investigator	
0021	Jorge Antonio Aldrete Velasco, MD	Principal Investigator	Paracelsus S. De Cv. Patriotismo No. 359, Col. San Pedro De Los Pinos, Mexico City 03800, Mexico
	Selynda Perez Argueta, MD	Sub-Investigator	
0022	Carlos Alejandro Stobschinski De Alba, MD	Principal Investigator	Medical Private Office Avenida La Paz 2567, Col. Arcos Vallarta Jalisco, Guadalajara 44130, Mexico
0023	Robert Detweiler, MD	Principal Investigator	Detweiler Family Medicine and Associates P.C., 1970 North Broad St, Lansdale, PA 19446, USA
	Evan Kessler, MD	Sub-Investigator	
	Michael Parke, MD	Sub-Investigator	
	Stephanie Shearer, MD	Sub-Investigator	
0025	Kathryn Lucas, MD	Principal Investigator	Diabetes & Endocrinology Consultants, 611 N. 35th St, Morehead City, NC 28557, USA
	Kristin Gainey-Ferree, MSN, RN, FNP-C	Sub-Investigator	
0026	Sumana Gangi, MD	Principal Investigator	Southern Endocrinology Associates PA, Suite A, 1621 N. Belt Line Rd, Mesquite, TX 75149, USA
	Gary Noworatzky, PA-C	Sub-Investigator	
0028	Luis Fernando Flota Cervera, MD	Principal Investigator	Cedime Instituto Vascular Calle 33#138-B, Merida, Yucatan 97129, Mexico
	Hector Gomez-Ceron, MD	Sub-Investigator	
0029	David Fittingoff, MD	Principal Investigator	Infosphere Clinical Research Inc., 7345 Medical Center Drive, West Hills, CA 91307, USA
	Dan Streja, MD	Sub-Investigator	
	Mohammed Iqbal, MD	Sub-Investigator	
0030	Kwabena Ayesu, MD	Principal Investigator	Omega Research Consultants, 2877 Delaney Ave., Orlando, FL 32806, USA
	Santosh Nair, MD	Sub-Investigator	
0031	Pablo Canino, MD	Principal Investigator	NewPhase Clinical Trials Corp., Suite 410, 333 West 41 St, Miami Beach, FL 33140, USA

SUPPLEMENTARY DATA

	Abelardo Vargas, MD	Sub-Investigator	
0034	Paul Norwood, MD	Principal Investigator	Valley Research, Suite 101, 550 E Herndon Ave., Fresno, CA 93720, USA
	Chelsea Flowe, MD	Sub-Investigator	
0036	David Klonoff, MA	Principal Investigator	Sutter Health, 100 South San Mateo Drive, San Mateo, CA 94401, USA
	Chhavi Mehta, MD	Sub-Investigator	
0037	Victoria Kuohung, BA, MD, JD	Principal Investigator	Beacon Clinical Research LLC, 1250 Hancock St, Quincy, MA 02169, USA
	Bindu Lal, MD	Sub-Investigator	
	Maxim Lutskey, MD, PhD		
	Xichen Wang, MS		
0038	Brian MacGillivray, MD	Principal Investigator	DCT-Stone Oak LLC dba, Discovery Clinical Trials, Suite 102, 10999 Ih-10 West Texas, San Antonio, TX 78230, USA
	Randall Schuster, MD	Sub-Investigator	
0039	Wynter Kipgen, MD	Principal Investigator	LION Research, Suite 200, 1139 36th Ave. NW, Norman, OK 73072, USA
	Jodi Dodson, ARNP, CNP	Sub-Investigator	LION Research, 1010 24th Ave. NW, Norman, OK 73069, USA
	Lindsay Flaming, ARNP	Sub-Investigator	
	Teresa Aberle, PA-C	Sub-Investigator	
	Lisa Connery, MD	Former Principal Investigator	
	Lubna Mirza, MD	Sub-Investigator	
0040	Serge Jabbour, MD, FACP, FACE	Principal Investigator	Thomas Jefferson University Hospital, 211 S 9th St, Philadelphia, PA 19107, USA
	Jeffrey Miller, MD	Sub-Investigator	
0041	Larry Distiller, Prof.	Principal Investigator	Centre for Diabetes and Endocrinology, 81 Central Ave., Houghton Estates, Johannesburg 2198, South Africa
	Laura Blacking, MD	Sub-Investigator	
	Debra Gordon, MD	Sub-Investigator	
	Barry Joffe, Prof.	Sub-Investigator	
	Brian Kramer, MD	Sub-Investigator	
	Stanley Landau, MD	Sub-Investigator	
	Leila Mayet, MD	Sub-Investigator	

SUPPLEMENTARY DATA

	Jayalakshmi Narainsamy, MD	Sub-Investigator	
0042	Johannes Lombaard, MD	Principal Investigator	Josh Research, 28 East Burger St., Rubins Building Free State, Bloemfontein 9301, South Africa
	Zaheer Ahmed Ebrahim Hoosain, MD	Sub-Investigator	
	Sharne Foulkes, MD	Sub-Investigator	
0043	Camelia Panus, MD	Principal Investigator	Urodiamed Srl, Bd. Gheorghe Chitu 35 Doj, Craiova 200342, Romania
	Tomina Popescu, MD	Sub-Investigator	
0044	Gabriela Negrisanu, Prof.	Principal Investigator	Centrul Medical Dr. Negrisanu, Str. Transilvania Nr. 7, Timis, Timisoara 400356, Romania
	Polina Geru, MD	Sub-Investigator	
	Andreea-Andrada Moica, MD	Sub-Investigator	
	Maria Mihaela Viruzab, MD	Sub-Investigator	
0045	Mircea Munteanu, Asst Prof.	Principal Investigator	Centrul Medical Sf. Stefan, Str. Samuil Micu Nr. 9, Timis, Timisoara 300125, Romania
	Lavinia Munteanu, MD	Sub-Investigator	
	Patricia Sabo, MD	Sub-Investigator	
0046	Nicoleta Mihaela Mindrescu, MD	Principal Investigator	Sc Nicodiab Srl, Str. Polona Nr. 92, District 1, Bucharest 010496, Romania
	Lucia-Luana Sebestyenl, MD	Sub-Investigator	
	Ioana Verde, MD	Sub-Investigator	
0047	Alex Guevara, MD	Principal Investigator	Rockwood Medical Clinic, Suite 304, 1217 Grand Ave., Fort Worth, TX 76164, USA
	Gustavo Pena, PA-C	Sub-Investigator	
0049	Sam Miller, MD	Principal Investigator	Science Advancing Medicine (Sam) Clinical Research, Suite 300, 7711 Louis Pasteur Drive, San Antonio, TX 78229, USA
0050	Trevenesan Padayachee, MD	Principal Investigator	Aliwal Shoal Medical Centre, 14 Bissett St , Umkomaas, Kwa-Zulu-Natal 4170, South Africa
	Parimala Govender, MD	Sub-Investigator	
0051	John Agaiby, MD	Principal Investigator	Clinical Investigation Specialists Inc., 6121 Green Bay Rd, Kenosha, WI 53142, USA
	Elizabeth Joseph, MD	Sub-Investigator	
	Jennifer Hoenig, APNP	Sub-Investigator	
0052	Dany Musungaie, Prof.	Principal Investigator	Jongaie Research, 551 WF Nkomo St, Pretoria West 183,

SUPPLEMENTARY DATA

			Gauteng, South Africa
0053	Zdenka Krejsova, MD	Principal Investigator	Diabetologicka ambulance Namesti Dr. M. Horakove 1313/8, Karlovy Vary 36001, Czech Republic
	Gita Makofova, MD	Sub-Investigator	
0055	Hilde Wasserbugerova, MD	Principal Investigator	DIKa centrum s.r.o, Kardiologicka a interni ambulance, Karvinska 5/1518, Havirov 73601, Czech Republic
	Barbara Buzova, Dr Med	Sub-Investigator	
	Sylva Kopecka, Dr Med	Sub-Investigator	
0058	Iuliana Filip, MD	Principal Investigator	Elitmedical Vasile Lupu St. Nr. 2 BI 32 EF, Ploiesti, Prahova 100018, Romania
	Oana Tudose, MD	Sub-Investigator	
0059	Andrew Jacovides, MD	Principal Investigator	Midrand Medical Centre Shop #1, Health Emporium, Corner Church and Market Sts, Gauteng Halfway House 1685, South Africa
	Shantakumari Ramduth, MD	Sub-Investigator	
0060	Jaco Jc Jurgens, MD	Principal Investigator	Djw Navorsing Box 84, 70 Shannonroad, Paardekraal, Noordheuwel, Krugersdorp 1739, South Africa
0062	Leon Fogelfeld, MD	Principal Investigator	John H. Stroger, Jr. Hospital of Cook County, 1900 W Polk St, Chicago, IL 60612, USA
	Sharon Fung, PhD, Rn, APN-CNS	Sub-Investigator	
	Yannis Guerra, MD	Sub-Investigator	
	Geraldine Holt, RN, MS	Sub-Investigator	
	Jessica Hwang, MD	Sub-Investigator	
	Lynn Kessler, MD	Sub-Investigator	
	Anoopa Koshy, MD	Sub-Investigator	
	Susana Mascarell, MD, MS	Sub-Investigator	
	Chioma Onyenwenyi, MD, MB	Sub-Investigator	
	Jasseena Veliyathumalil, FNP	Sub-Investigator	
0063	Cristina Victoria Mistodie, MD	Principal Investigator	S.C. Milena Sante S.R.L, Diabet Zaharat, Nutritie si Boli Metabolice, Str. Nicolae Balcescu, Nr. 31, Galati 800001, Romania
	Valentin Bulza, MD	Sub-Investigator	Dr Mistodie, Cristina Victoria MD, Office of Str. Brailei, Nr. 68, Bloc Br 3, Ap. 4, Galati 800098, Romania
0064	Andrew Bartlett, MD	Principal Investigator	PMG Research of Christie Clinic LLC, 1801 West Windsor Rd,

SUPPLEMENTARY DATA

			Champaign, IL 61822, USA
	Tegan McCormick, MD Sumuk Sundaram, MD	Sub-Investigator Sub-Investigator	
0065	Simona Camelia Tivadar, MD	Principal Investigator	Sanatatea Ta Medical Center, 44 Viitorului St, Bucharest 20614, Romania
	Andriana Dumitrescu, MD Oana-Andreea Parliteanu, MD	Sub-Investigator Sub-Investigator	
0066	Hemant Makan, MD	Principal Investigator	Office of Dr Hemant Makan MD, Suite 6, 80 Gemsbok Ave., Seva Sadan, Lenasia, Gauteng 1827, South Africa
0067	Ivy-Joan Madu, MD	Principal Investigator	Diabetes Associates Medical Group, Suite 106 and 205, 1234 West Chapman Ave., Orange, CA 92868, USA
	Paul Rosenblit, PhD, FACE, FNLA	Sub-Investigator	
0068	Hiralal G. Maheshwari, MD, PhD	Principal Investigator	Midwest Endocrinology, 380 Terra Cotta Rd, Crystal Lake, IL 60012, USA
0069	Lisa Crandall, MD	Principal Investigator	In-Quest Medical Research LLC, 5245 Buford Hwy, Norcross, GA 30071, USA
	Esther Lim, MD	Former Principal Investigator	
	Naresh Parikh, MD	Former Principal Investigator	
	Kota Reddy	Sub-Investigator	In-Quest Medical Research LLC, 6330 Primrose Hill Court, Norcross, GA 30092, USA
0070	Steve Sitar, MD	Principal Investigator	Orange County Clinical Trials Inc., Suite 409, 1801 West Romney Drive, Anaheim, CA 92801, USA
	Grace Young, MD Francisco Badar, MD	Sub-Investigator Sub-Investigator	Core Research Group, 19123 Bloomfield Ave., Cerritos, CA 90703, USA
0071	Paul Wakefield, MD	Principal Investigator	PMG Research Inc, 1200 Merchant Drive, Knoxville, TN 37912, USA
	Todd Peters, MD Michael H West Mark Pritcher, MD Todd Chambers, MD	Sub-Investigator Sub-Investigator Sub-Investigator Sub-Investigator	
0072	Lenka Dohnalova, MD	Principal Investigator	Diabetologie, interna Aatice Aeikolskaat 17, Matice skolske

SUPPLEMENTARY DATA

			17, Ceske Budejovice, Aeikolskaat 37001, Czech Republic
	Jana Donalova, MD	Sub-Investigator	
0075	Rigoberto Reguero, MD	Principal Investigator	Applemed Research Inc., 6850 Coral Way, Miami, FL 33155, USA
	Agustin Latorre, MD	Sub-Investigator	
	Lidya Acosta-Valdes	Sub-Investigator	
0076	Alvaro Ocamp, MD	Principal Investigator	SouthCoast Research Center Inc., Suite 901, 1011 Sunnybrook Road, Miami, FL 33136, USA
	Mara Rodriguez, MD	Sub-Investigator	
0078	Drahomira Gulakova, MD	Principal Investigator	Medicon, Antala Staska 80, Prague 140 00, Czech Republic
	Michala Pelikanova, MD	Sub-Investigator	
0080	Tomas Brychta, MD, PhD	Principal Investigator	Agentura Science Pro, Dlouha 34, Olomouc 77200, Czech Republic
	Svetlana Hrachovinova, Dr Med	Sub-Investigator	
0081	Martin Petr, MD	Principal Investigator	Hostinskeho 1533, Prague 155 00, Czech Republic
	Alena Andresova, MD	Sub-Investigator	
0082	Franklin Zieve, MD	Principal Investigator	VA Medical Center, 1201 Broad Rock Blvd (111C), Richmond, VA 23249, USA
	Sonja Fredrickson, MD, BC-ADM	Sub-Investigator	
	James Levy, MD	Sub-Investigator	
	Phillip Tarkington, MD	Sub-Investigator	
0083	William Biggs, MD	Principal Investigator	Amarillo Medical Specialists, Suite 400, 1215 Coulter St, Amarillo, TX 79106, USA
	Edwin Dondon, MD	Sub-Investigator	
0084	John Cosby, MD	Principal Investigator	Oceane7 Clinical Research LLC, 8200 W Flagler St, Miami, FL 33144-2155, USA
	Miguel Aponte, MD	Sub-Investigator	
0086	Jiri Pumpria, MD	Principal Investigator	PreventaMed, s.r.o., Vila Zdravi, Dominovina 2/744, Olomouc 779 00, Czech Republic
	Frantisek Sincl, MD	Sub-Investigator	
0087	Juan Pablo Frias, MD	Principal Investigator	National Research Institute, 302, 2010 Wilshire Blvd, Los Angeles, CA 90057, USA
	Stanley Hsia, MD	Sub-Investigator	

SUPPLEMENTARY DATA

	Robert Jenders, MD Sharon Kelly, NP	Sub-Investigator Sub-Investigator	
0089	Stanley Hsia, MD	Principal Investigator	National Research Institute, 6120 Seville Ave., Huntington Park, CA 90255, USA
	Juan Pablo Frias, MD, FACE Tricia Leon, MD Parvin Syal, MD Robert Jenders, MD	Sub-Investigator Sub-Investigator Sub-Investigator Sub-Investigator	National Research Institute, 302, 2010 Wilshire Blvd, Los Angeles, CA 90057, USA
0090	Sharon Kelly, NP Amina Haggag, MD	Sub-Investigator Principal Investigator	Anaheim Clinical Trials, Suite 303, 1085 N. Harbor Blvd, Anaheim, CA 92801, USA
0091	Peter Winkle, MD Ripley Hollister, MD	Sub-Investigator Principal Investigator	Lynn Institute of the Rockies, 2960 North Circle Drive, Colorado Springs, CO 80909, USA
	William Stone, MD Lewis Romett, MD	Former Principal Investigator Sub-Investigator	
0092	Teresa Sligh, MD	Principal Investigator	Providence Clinical Research c/o Pharmaseek LLC, Suite 300A, 6400 Laurel Canyon Blvd, North Hollywood, CA 91606, USA
	Samuel Ceballos, CRC George Melikian, MD, MPH Scott Sligh, MD	Sub-Investigator Sub-Investigator Sub-Investigator	
0093	Mark Kutner, MD	Principal Investigator	Suncoast Research Group LLC, 2128 West Flagler St, Miami, FL 33135, USA
	Azarel Abinader, MD Eduardo Navarro, ARNP, MSN	Sub-Investigator Sub-Investigator	
0094	Karlton Pettis, MD	Principal Investigator	Metrolina Internal Medicine, Suite 110, 700 South Torrence St, Charlotte, NC 28204, USA
	Clarence Ellis, MD David Smith, MD	Sub-Investigator Sub-Investigator	
0095	Daniel Whitmer, MD	Principal Investigator	Clinical Inquest Center, 1911 North Fairfield Rd, Beavercreek, OH 45432, USA
	Avni Arora, MD	Sub-Investigator	

SUPPLEMENTARY DATA

	Rameswar Chaudhuri, MD Candace Hefner, MA Catherine McNamara, MA	Sub-Investigator Sub-Investigator Sub-Investigator	
0096	Guillermo Somodevilla, MD	Principal Investigator	Cordova Research Institute, Suite 101, 7815 Coral Way, Miami, FL 33155, USA
	Alejandro Espaillat, MD	Sub-Investigator	
0097	Katarina Halciakova, MD	Principal Investigator	Heart Solution Kartouzska 3274/10, Prague 150 00, Czech Republic
	Stepanka Stehlikova, MD	Former Principal Investigator	Medifin a.s, diabetologie, Kartouzska 204/6, Prague 150 00, Czech Republic
	Iva Skarpova, MD	Sub-Investigator	
0099	Ralph Wade, MD	Principal Investigator	Progressive Clinical Research, Suite 117, 425 South Medical Drive, Bountiful, UT 84010, USA
	Jonna Nash, MA, CCRC David Badham, PA-C Daniel Chappell, DO Allison Hanna, DO MarDiene Jeffs, PA-C Hannah Porter, PA-C Sandra Waite, APRN Sean Webster, PA-C	Sub-Investigator Sub-Investigator Sub-Investigator Sub-Investigator Sub-Investigator Sub-Investigator Sub-Investigator Sub-Investigator	
0100	Bernd Becker, MD	Principal Investigator	Praxis Am Markt (Dr Becker), Weidkamp 1 Nordrhein- Westfalen, Essen 45355, Germany
	Lanah Dabach, MD	Sub-Investigator	
0102	Elwira Gromniak, MD	Principal Investigator	Indywidualna Specjalistyczna Praktyka Lekarska ul. Starzynskiego 2, Szczecin 70-506, Poland
	Izabella Majewska, MD Agnieszka Niemiec, MD	Sub-Investigator Sub-Investigator	
0103	Andrea Grosz, Diabetologist	Principal Investigator	Betegapolo Irgalmas Rend, Budai Irgalmasrendi Korhaz, Frankel Leo St. 17–19, Budapest 1027, Hungary
	Janos Tibor Kis, Diabetologist Erika Palhegyi, Dr Med Zsofia Kiss, Diabetologist Laszlo Schadl, PhD	Sub-Investigator Sub-Investigator Sub-Investigator Sub-Investigator	
0104	Dominik Dahl, MD	Principal Investigator	Gemeinschaftspraxis fuer Innere Medizin und Diabetologie,

SUPPLEMENTARY DATA

			Beselerstr. 2a, Hamburg 22607, Germany
	Ulrich Wendisch, MD	Sub-Investigator	
0106	Cristobal Morales Portillo, MD	Principal Investigator	Hospital Universitario Virgen Macarena Avda Dr Fredriani, 3 Semisotano, Sevilla 41009, Spain
	Mariola Mendez Muros, MD	Sub-Investigator	
0107	Anna Olak-Popko, MD	Principal Investigator	MTZ Clinical Research Sp. z o.o., Pawinskiego 5, Warszawa 02-106, Poland
	Inga Chomicka, MD	Sub-Investigator	
	Anna Dryja, MD	Sub-Investigator	
	Katarzyna Wolder, MD	Sub-Investigator	
0108	Ewa Pankowska, Asst Prof.	Principal Investigator	Institut Diabetologii Sp. z o.o., Zeganska 46A, Warszawa 04-736, Poland
	Zuzanna Sklodowska, MD	Sub-Investigator	
	Joanna Wardaszko, MD	Sub-Investigator	
0109	Dorota Pisaczyk-Wiza, MD	Principal Investigator	Gaja Poradnie Lekaskie Os., Orla Bialego 103, Poznan 61-251, Poland
	Joanna Dytfeld, MD	Sub-Investigator	
	Anna Majchrzak, MD	Sub-Investigator	
0110	Hasan Alawi, MD	Principal Investigator	Diabetologische Praxis Dr Alawi, Brueckenstr. 30, Saarlouis 66740, Germany
	Bernd Warken, MD	Sub-Investigator	
0111	Janos Bárdos, MD	Principal Investigator	Diab 2002 Bt Diabetes Gondozó, Nap str. 2, Mako 6900, Hungary
	Maria Domokos, MD	Sub-Investigator	
0112	Albert Szocs, MD	Principal Investigator	Szocs Depot Kft Jozsef A. U. 52. I.5, Budapest 1042, Hungary
	Endre Adorjani, MD	Sub-Investigator	
0114	Eleonora Beke, MD	Principal Investigator	Szent Margit Rendelointezet, Vorosvari ut 88–96, Budapest 1032, Hungary
	Ivan Ory, MD	Sub-Investigator	
0115	Katazyna Madziarska, MD	Principal Investigator	WroMedica S.C., Mickiewicza 91, Wroclaw 51685, Poland
	Elzbieta Kalicinska, MD	Sub-Investigator	
	Alicja Tuzcek-Nowak, MD	Sub-Investigator	
0116	Laszlo Konyves, MD	Principal Investigator	Lausmed Kft. Fulep Lajos U. 15, Baja 6500, Hungary
	Monika Farago, MD	Sub-Investigator	

SUPPLEMENTARY DATA

0117	Pedro Mezquita Raya, MD	Principal Investigator	Clinica San Pedro, Plaza de San Pedro 5, Almeria 4001, Spain
	Daniel Cepero, MD	Sub-Investigator	
	Miguel Gomez Matarin, MD	Sub-Investigator	
	Rebeca Reyes Garcia, MD	Sub-Investigator	
0118	Orsolya Kiss, MD	Principal Investigator	Swan Med Hungary Kft Baross Str. no. 7, Letavertes 4281, Hungary
	Edit Nagy, MD	Sub-Investigator	
0120	Marta Dziermanska-Krysztopowicz, MD	Principal Investigator	RENEW Kinika Medycyny Estetycznej Bialystok, Gajowa 29, Bialystok 15-794, Poland
	Lukasz Bolkun, MD	Sub-Investigator	
	Marta Piascik, MD	Sub-Investigator	
0123	Andras Vertes, MD	Principal Investigator	Del-pesti Centrumkorhaz-Orszagos Hematologiai es Infektologiai Intezet, Nagyvarad ter. 1, Budapest 1097, Hungary
	Istvan Kosa, MD	Sub-Investigator	
0125	Alfonso Soto Gonzalez, MD	Principal Investigator	Centro de Gestion Integrada de A Coruna Servicio de Endocrinologia 3a Planta, 84 Hotel de Pacientes, Planta 6, despacho 614, A Coruna 15006, Spain
	Fernando Toba Alonso, MD	Sub-Investigator	
	Oscar Ferreiro, MD	Sub-Investigator	
0126	Zsolt Sudar, MD	Principal Investigator	Tolna County Balassa Janos Hospital Beri Balogh Adam U. 6-7, Tolna Szekszard 7100, Hungary
	Vince Szi, MD	Sub-Investigator	
	Gabriella Ulrich, MD	Sub-Investigator	
0130	Artur Rul, MD	Principal Investigator	Niepubliczny Zaklad Opieki Zdrowotnej CEREO-MED Sp. z o.o., Zbocze 18A Lodz, Lodzkie 92-003, Poland
	Hubert Stefan, MD	Sub-Investigator	
0132	Hanna Krysiak-Kowaluk, MD	Principal Investigator	RCMed Oddzia, Zeromskiego 41A, Sochaczew 96-500, Poland
	Piotr Opadczuk, MD	Sub-Investigator	
	Jan Zambrzycki, MD	Sub-Investigator	
0137	Miklos Kajetan, MD	Principal Investigator	Strazsahegy Medicina Haziorsosi Rendelo Zrinyi Ut 224/A, Budapest 1170, Hungary
	Edina Hernandez, MD	Sub-Investigator	

SUPPLEMENTARY DATA

	Akos Veres, MD	Sub-Investigator	
0138	Marcus Lind, Asst Prof.	Principal Investigator	NU Hospital Group Diabetes Outpatient Clinic, Uddevalla Hospital, Uddevalla 45180, Sweden
	Bo Grande, MD	Sub-Investigator	
	Ioannis Bounias, MD	Sub-Investigator	
	Helene Dimenas, MD	Sub-Investigator	
	Mauro Tancredi, MD	Sub-Investigator	
0141	Robert Silver, MD	Principal Investigator	Southern New Hampshire Diabetes and Endocrinology, 29 Northwest Blvd, Nashua, NH 03063, USA
	Ellie Chuang, MD	Sub-Investigator	
0143	Lluis Martinez Palli, MD	Principal Investigator	CAP Atencion Primaria Vallcarca, Sant Gervasi Av. Vallcarca, Barcelona 169-205, Spain
0144	Jacek Zieleniewski, MD	Principal Investigator	RCMed Nowy Duninow Ul., Długa 2, Nowy Duninow 09-505, Poland
	Piotr Opadczuk, MD	Sub-Investigator	
	Katarzyna Urbanska, MD	Sub-Investigator	
0145	Tuan Huy Tran, MD	Principal Investigator	Omega Clinical Research Center, Suite 103, 3901 Houma Blvd, Metairie, LA 70006, USA
	Jonathan Wise, MD, FACP	Sub-Investigator	
0150	Monika Lukaszewicz, MD	Principal Investigator	Centrum Badan Klinicznych PI-House sp. z o.o., Na Zaspie 3, Gdansk 80-546, Poland
	Marta Tumialis, MD	Sub-Investigator	
0151	Slawomir Pynka, MD	Principal Investigator	Niepubliczny Zakad Opieki Zdrowotnej Sawomir Pynka Poradnia Diabetologiczno-Internistyczna, 5 Lipca 36B, Szczecin 70-376, Poland
	Jaroslaw Ogonowski, MD	Sub-Investigator	
0155	Charlotte Delavaran, MD	Principal Investigator	Probar E Lund AB, Lilla Fiskaregatan 10, Lund 222 22, Sweden
	Anders Luts, MD	Sub-Investigator	
0160	Emilia Pelayo Orozco, MD	Principal Investigator	Centro de Investigacion Medica de Occidente S.C., Avenida Empresarios 150, Torre Elite, piso 16 consultorio 1602, Zapopan, Jalisco 45116, Mexico
	Sandra Obdulia Caballero Ganzalez, MD	Sub-Investigator	
	Lucero Garcia Arredondo, MD	Sub-Investigator	

SUPPLEMENTARY DATA

0161	Margareta Leonardsson-Hellgren, MD Joel Ellbin Andersson, MD Han Nguyen, MD Yang Shao, MD	Principal Investigator Sub-Investigator Sub-Investigator Sub-Investigator	Primary care Trial Center (PTC), Naverlursgatan 42, Vastra Frolunda 421 44, Sweden
0162	Marc Oliver Kornmann, MD Andreas Guenther Eich, MD Stefanie Franke, MD Alexander Mann, Priv. Doz. Dr Med	Principal Investigator Sub-Investigator Sub-Investigator Sub-Investigator	IKF Institut fuer klinische Forschung, Schaumainkai 101–103, Frankfurt am Main 60596, Germany
0163	Hermann Braun, Diabetologist Edith Maria Ohrig-Pohl	Principal Investigator Sub-Investigator	Diabetespraxis Prenzlauer Allee, Prenzlauer Allee 146, Berlin 10409, Germany
0164	Eugenia Czajkowska-Kaczmarek, MD Maria Dabrowska, MD Barbara Kaczmarek, MD Krystyna Opawska, MD	Principal Investigator Sub-Investigator Sub-Investigator Sub-Investigator	Polimedica Centrum Badan, Profilaktyki I Leczenia, Witkacego 2D, Zgierz 95-100, Poland
0165	Jolanta Kitowska-Koterla, MD Alina Strzala-Kleczek, MD Tomasz Szczepanik, MD Gabriela Watemborska-Matuszyk, MD	Principal Investigator Sub-Investigator Sub-Investigator Sub-Investigator	Centrum Medyczne Pratia Katowice, Dabrowki 13, Katowice 40-081, Poland
0166	Manuel Enrique Aguilera Real, MD	Principal Investigator	Centro De Investigacion Biomedica Y Farmaceutica San Francisco 657-A, 8-B, Colonia Del Valle, Delegacion Benito Juarez, Distrito Federal 03100, Mexico
0167	Grazyna Cieslik, MD Karolina Cieslik, MD Malgorzata Walus-Miarka, MD	Principal Investigator Sub-Investigator Sub-Investigator	Centrum Medyczne Pratia Krakow Ul., Pradnicka 12. lok. 502, Krakow, Malopolska 30002, Poland
0169	Fernando Flores-Lozano, MD	Principal Investigator	Universidad Autonoma de Guadalajara – Hospital Dr Angel Leano (HAL), Av. Dr Angel Leano 500 Colonia Los Robles, Zapopan, Jalisco 45200, Mexico

SUPPLEMENTARY DATA

	Celia M Anaya Preciado	Sub-Investigator	
	Ana Maria Barragan Vigil, MD	Sub-Investigator	
	Angela Cabeza-Gomez, MD	Sub-Investigator	
	Elena Calarco Zaccari, MD	Sub-Investigator	
0170	Staffan Salmonsson, MD	Principal Investigator	Obackakliniken, Harnosands Sjukhus Sodra Vagen 3-5, Harnosand 871 82, Sweden
	Kjell Antus, MD	Sub-Investigator	
0172	Pedro Alberto Garcia Hernandez, MD	Principal Investigator	Hospital Universitario Dr Jose Eleuterio Gonzalez, Av. Francisco I Madero y Gonzalitos S/N, Colonia Mitras Centro, Monterrey, Nuevo Leon 64460, Mexico
	Franciso Javier Cavazos Oliveros, MD	Sub-Investigator	
	Claudia Aida Flores Moreno, MD	Sub-Investigator	
	Alejandra Santiago Aguirre, MD	Sub-Investigator	
0174	Hans Perrild, MD	Principal Investigator	Bispebjerg Hospital Afdeling IC Forskning, Bispebjerg Bakke 23, Bygning 11, indgang 11B stuen Gallen, Copenhagen NV 2400, Denmark
	Malin Nilsson, MD	Sub-Investigator	
	Ane Mette Zander Olsen, MD	Sub-Investigator	
0175	Dennis Karounos, MD	Principal Investigator	Lexington VA Medical Center, Suite 111C, 1101 Veterans Dr., Lexington, KY 40502, USA
	Derik Adams, DO	Sub-Investigator	
	Matthew Hager, MD	Sub-Investigator	
0176	Michelle Welch, MD	Principal Investigator	Consano Clinical Research, Suite 320, 4118 Pond Hill Road, Bldg 3, Shavano Park, TX 78231, USA
	Daniel Katselnik, MD	Sub-Investigator	
0177	Rick Whiles, MD	Principal Investigator	Holston Medical Group, Suite 2600, 240 Medical Park Blvd, Bristol, TN 37620, USA
	Andrew Brockmyre, MD	Sub-Investigator	
	Samuel Plucker, MD	Sub-Investigator	
	Candyce Poteet, APRN	Sub-Investigator	
	Roger Begley, LPN	Sub-Investigator	
0178	Curtis Jantzi, MD	Principal Investigator	Holston Medical Group, 105 West Stone Dr, 3rd Floor, Kingsport, TN 37660, USA
	Shance Daniell, PA-C	Sub-Investigator	

SUPPLEMENTARY DATA

	David Morin, MD	Sub-Investigator	
0179	Keith Harrison, MD	Principal Investigator	Bally Medical Group, 1315 Route 100, Barto, PA 19504, USA
