

SUPPLEMENTARY DATA

Table of Contents

Supplemental Figure S1. Kaiser Permanente Diabetes Registry Patient Flow Diagram

Supplemental Table S1. Diagnostic and procedure codes and frequency of events during follow-up for outcomes

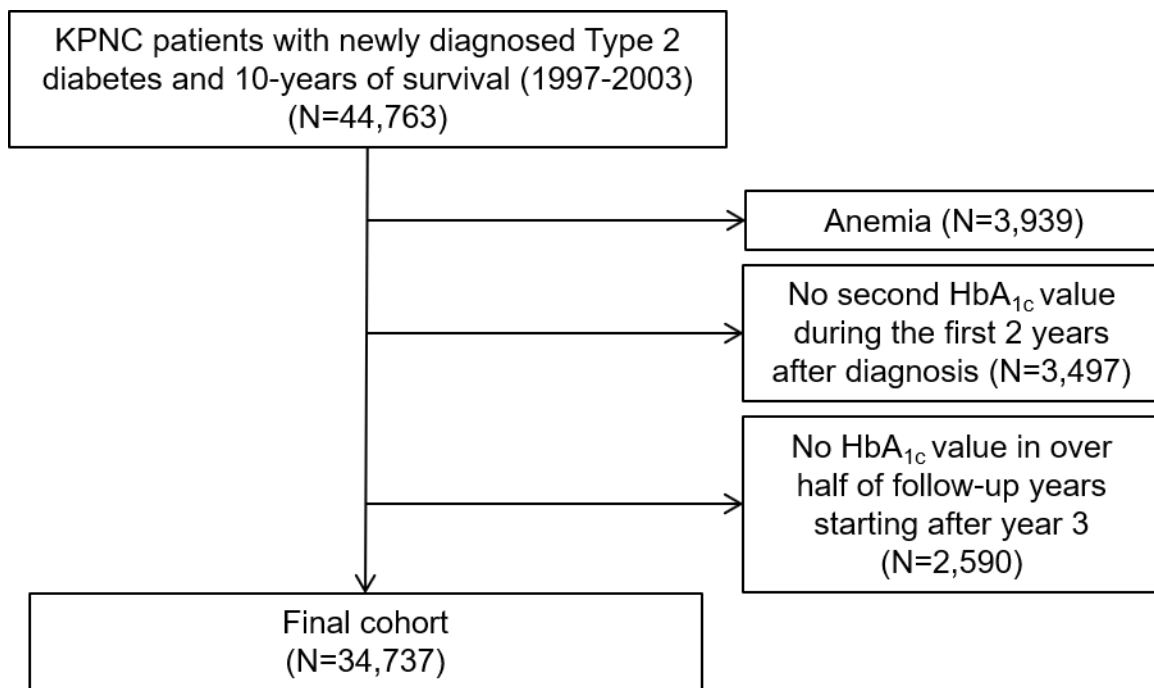
Supplemental Figure S2. Sensitivity Analysis: Right-Censoring Follow-up Time at 5 Years for Microvascular and Macrovascular Events

List of Investigators:

Neda Laiteerapong, MD, MS; Sandra A. Ham, MS; Yue Gao, MPH; Howard H. Moffet, MPH; Jennifer Y. Liu, MPH; Elbert S. Huang, MD, MPH; Andrew J. Karter, PhD

Supplementary Figure S1. Kaiser Permanente Diabetes Registry Patient Flow Diagram

Title: Kaiser Permanente Diabetes Registry Patient Flow Diagram Legend: None



SUPPLEMENTARY DATA

Supplementary Table S1. Diagnostic and procedure codes and frequency of events during follow-up for outcomes

Outcomes	Data Source	ICD-9 CM Codes	CPT Codes
Advanced microvascular events			
End-stage renal disease (ESRD) ¹	Inpatient or ESRD registry	585.6	
Diabetic eye disease ²	Outpatient	362.02, 362.07, 369	67208, 67210, 67227, 67228
Lower extremity amputation ³	Inpatient	84.10-84.17, 84.18, 84.19	27598, 27880, 27881, 27882, 27884, 27886, 27888, 27889, 28800, 28805, 28820, 28825, 28810, 27290, 27295
Macrovascular events			
Coronary artery disease ⁴⁻⁸	Inpatient	36.01, 36.02, 36.03, 36.04, 36.05, 36.06, 36.07, 36.08, 36.09, 36.10, 36.11, 36.12, 36.13, 36.14, 36.15, 36.16, 36.19, 410	
Cerebrovascular disease ⁸⁻¹¹	Inpatient	38.11, 38.12, 431.x, 433.x, 434.x, 436.x.	35301, 35390, 35501, 35506, 35507, 35508, 35509
Congestive heart failure ¹²	Inpatient or emergency department	402.01, 402.11, 402.91, 428	
Vascular disease ^{13,14}	Inpatient	250.7, 39.50, 440.x, 441.x, 442.x, 443.9	
Mortality	California State Mortality File, Social Security Death Records, or Kaiser Administrative records		

SUPPLEMENTARY DATA

Supplementary Figure S2. Sensitivity Analysis: Right-Censoring Follow-up Time at 5 Years for Microvascular and Macrovascular Events

Title: Sensitivity Analysis: Right-Censoring Follow-up Time at 5 Years for Microvascular (S2A) and Macrovascular Events (S2B)

Legend:

x-axis: Adjusted Hazard Ratio

y-axis: Early Exposure Period (Years)

black circle: HbA_{1c} 6.5% to <7.0% (48 to <53 mmol/mol)

white square: HbA_{1c} 7.0% to <8.0% (53 to <64 mmol/mol)

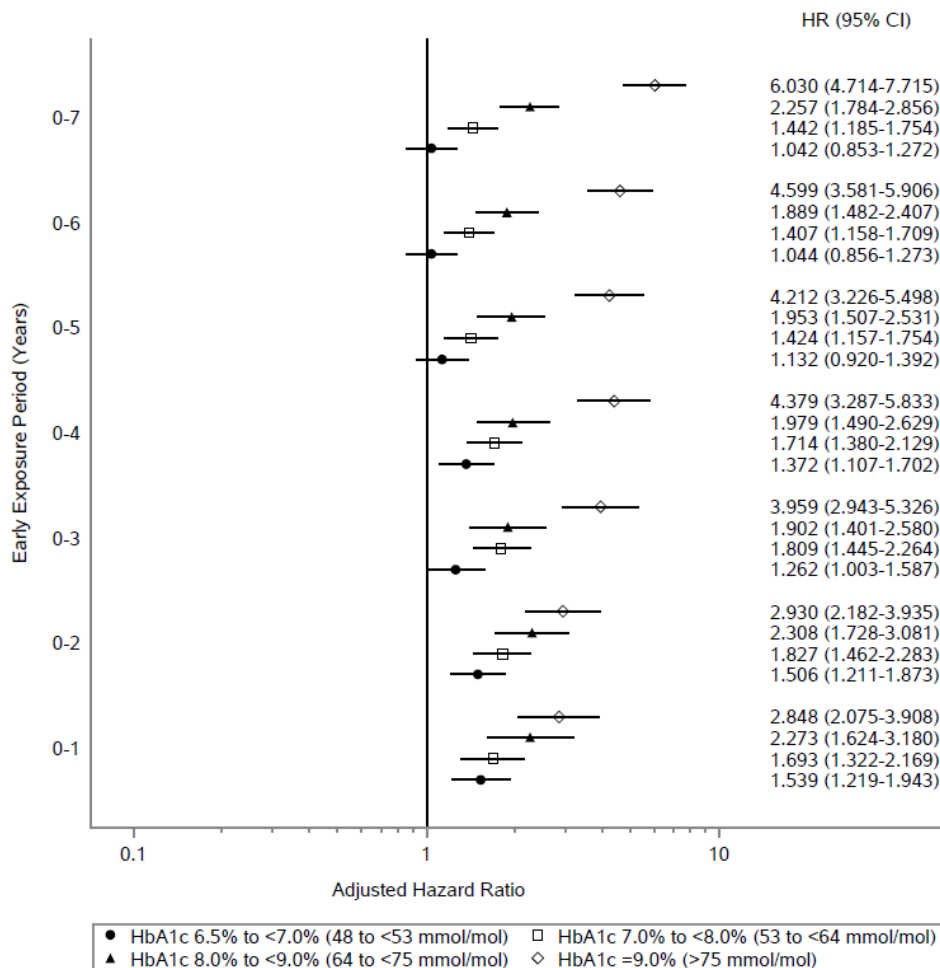
black triangle: HbA_{1c} 8.0% to <9.0% (64 to <75 mmol/mol)

white diamond: HbA_{1c} ≥9.0% (≥75 mmol/mol)

Abbreviations: CI: confidence interval

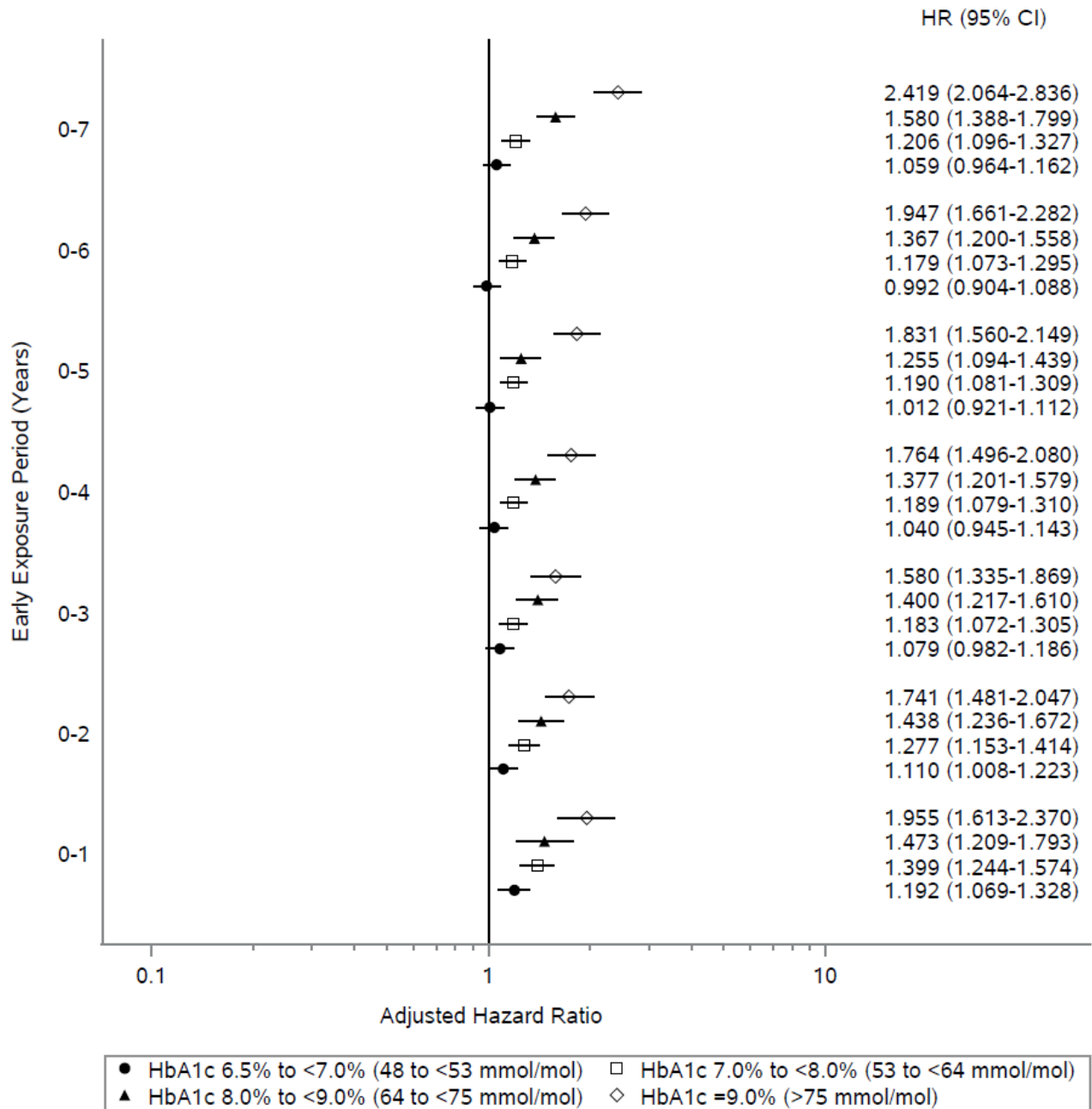
Footnote: Hazard ratios adjusted for year of diagnosis, age at diagnosis, gender, race/ethnicity, body mass index, systolic and diastolic blood pressure, total cholesterol, high density lipoprotein cholesterol, smoking status, HbA_{1c} after each early exposure period, and comorbidity.

S2A. Microvascular Event Risk



SUPPLEMENTARY DATA

S2B. Macrovascular Event Risk



SUPPLEMENTARY DATA

1. Rebholz CM, Coresh J, Ballew SH, et al. Kidney Failure and ESRD in the Atherosclerosis Risk in Communities (ARIC) Study: Comparing Ascertainment of Treated and Untreated Kidney Failure in a Cohort Study. *Am J Kidney Dis.* 2015;66(2):231-239.
2. Muir KW, Gupta C, Gill P, Stein JD. Accuracy of international classification of diseases, ninth revision, clinical modification billing codes for common ophthalmic conditions. *JAMA Ophthalmol.* 2013;131(1):119-120.
3. Fincke BG, Miller DR, Turpin R. A classification of diabetic foot infections using ICD-9-CM codes: application to a large computerized medical database. *BMC Health Serv Res.* 2010;10:192.
4. Brouwer ES, Napravnik S, Eron JJ, Jr., et al. Validation of Medicaid Claims-based Diagnosis of Myocardial Infarction Using an HIV Clinical Cohort. *Med Care.* 2015;53(6):e41-48.
5. Cutrona SL, Toh S, Iyer A, et al. Validation of acute myocardial infarction in the Food and Drug Administration's Mini-Sentinel program. *Pharmacoepidemiol Drug Saf.* 2013;22(1):40-54.
6. McCormick N, Lacaille D, Bhole V, Avina-Zubieta JA. Validity of myocardial infarction diagnoses in administrative databases: a systematic review. *PLoS One.* 2014;9(3):e92286.
7. Metcalfe A, Neudam A, Forde S, et al. Case definitions for acute myocardial infarction in administrative databases and their impact on in-hospital mortality rates. *Health Serv Res.* 2013;48(1):290-318.
8. Wahl PM, Rodgers K, Schneeweiss S, et al. Validation of claims-based diagnostic and procedure codes for cardiovascular and gastrointestinal serious adverse events in a commercially-insured population. *Pharmacoepidemiol Drug Saf.* 2010;19(6):596-603.
9. Boan AD, Voeks JH, Feng WW, et al. The impact of ICD-9 revascularization procedure codes on estimates of racial disparities in ischemic stroke. *J Stroke Cerebrovasc Dis.* 2014;23(10):2681-2686.
10. McCormick N, Bhole V, Lacaille D, Avina-Zubieta JA. Validity of Diagnostic Codes for Acute Stroke in Administrative Databases: A Systematic Review. *PLoS One.* 2015;10(8):e0135834.
11. Woodfield R, Grant I, Sudlow CL. Accuracy of Electronic Health Record Data for Identifying Stroke Cases in Large-Scale Epidemiological Studies: A Systematic Review from the UK Biobank Stroke Outcomes Group. *PLoS One.* 2015;10(10):e0140533.
12. Iribarren C, Karter AJ, Go AS, et al. Glycemic control and heart failure among adult patients with diabetes. *Circulation.* 2001;103(22):2668-2673.
13. Fan J, Arruda-Olson AM, Leibson CL, et al. Billing code algorithms to identify cases of peripheral artery disease from administrative data. *J Am Med Inform Assoc.* 2013;20(e2):e349-354.
14. Mell MW, Pettinger M, Proulx-Burns L, et al. Evaluation of Medicare claims data to ascertain peripheral vascular events in the Women's Health Initiative. *J Vasc Surg.* 2014;60(1):98-105.