

SUPPLEMENTARY DATA

Supplementary Table 1. ICD diagnosis and procedure codes used to assess cataract diagnosis and intraocular lens implantation

	Diagnosis codes used:	Procedure codes used:
ICD-9-CM	366.0-366.23, 366.3-366.34, 366.4-366.46, 366.5-366.53, 366.8, 366.9	13.11, 13.19, 13.2, 13.3, 13.41-13.43, 13.51, 13.59, 13.63, 13.64, 13.65, 13.66, 13.69-13.72
ICD-10-AM	H26.0-H26.4, H26.8-H26.9, H28.1-2, Z98.49, Z96.1	42731-00, 42703-00, 42701-00, 42701-01, 42698-00, 42702-00, 42702-01, 42698-01, 42702-02, 42702-03, 42698-02, 42702-04, 42702-05, 42698-03, 42702-06, 42702-07, 42698-04, 42702-08, 42702-09, 42731-01, 42698-05, 42702-10, 42702-11, 42737-00, 42734-00, 42788-00, 42791-02, 42719-00, 42731-00, 42719-02, 42716-0

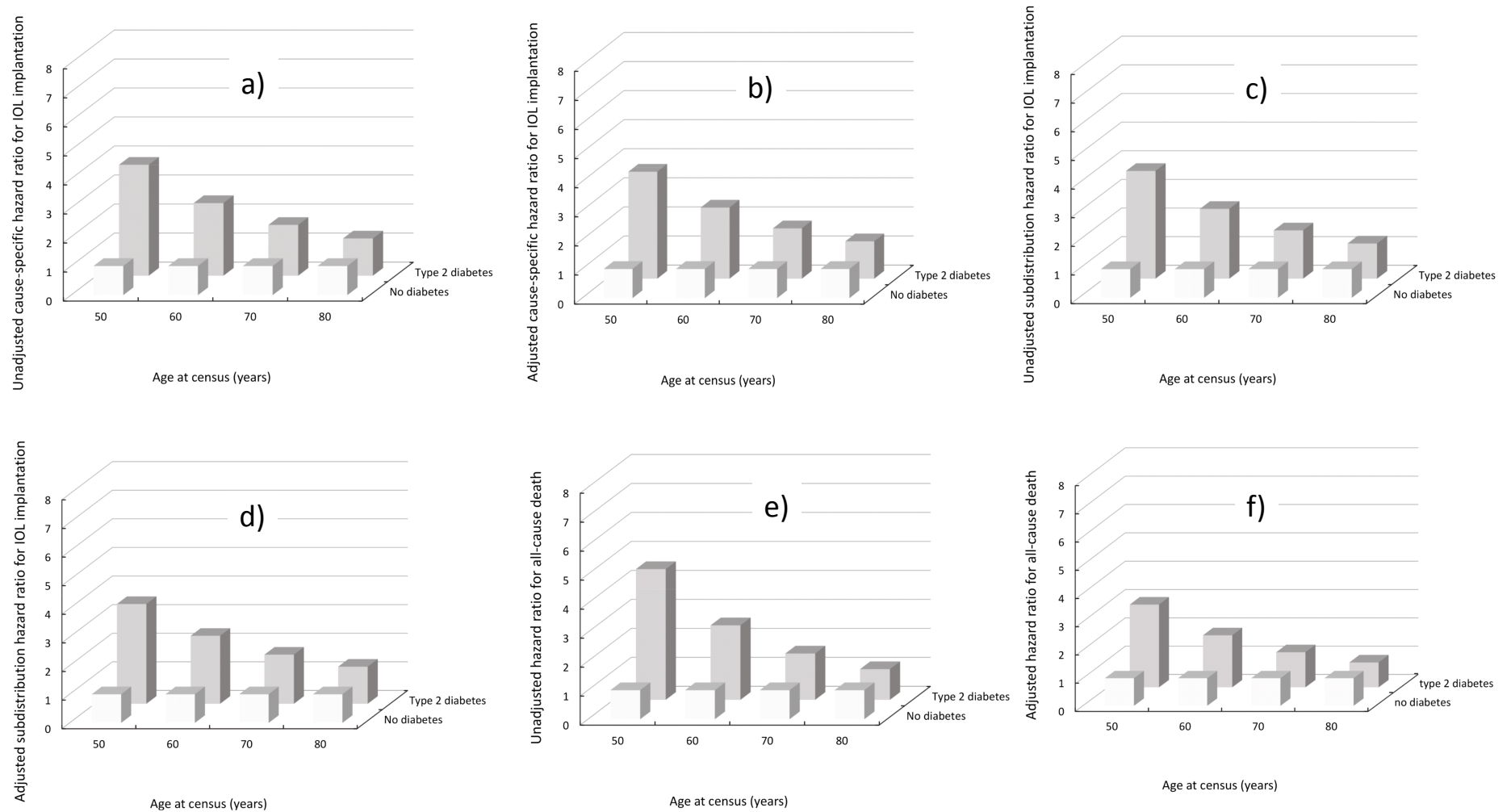
SUPPLEMENTARY DATA

Supplementary Table 2. Models of first incident cataract surgery and the competing event of death in FDS2 participants with type 2 diabetes and matched residents without diabetes with no prior cataract surgery by type 2 diabetes status and with age as timescale i) unadjusted and ii) adjusted for baseline age, sex, and Charlson Co-morbidity Index score.

Outcome	Type 2 diabetes status	Cox model, coefficient (95% CI)	<i>P</i> -value	Fine and Gray model, coefficient (95% CI)	<i>P</i> -value
i) First cataract surgery	Main	10.43 (5.62-15.24)	<0.001	10.65 (5.95-15.34)	<0.001
	Time-varying	-2.32 (-3.45 to -1.20)	<0.001	-2.38 (-3.48 to -1.29)	<0.001
ii) First cataract surgery	Main	10.07 (5.24-14.90)	<0.001	9.49 (4.80-14.18)	<0.001
	Time-varying	-2.24 (-3.37 to -1.11)	<0.001	-2.11 (-3.20 to -1.01)	<0.001
i) All-cause death	Main	13.57 (8.11-19.02)	<0.001		
	Time-varying	-3.08 (-4.35 to -1.81)	<0.001		
ii) All-cause death	Main	10.97 (5.38-16.56)	<0.001		
	Time-varying	-2.53 (-3.83 to -1.23)	<0.001		

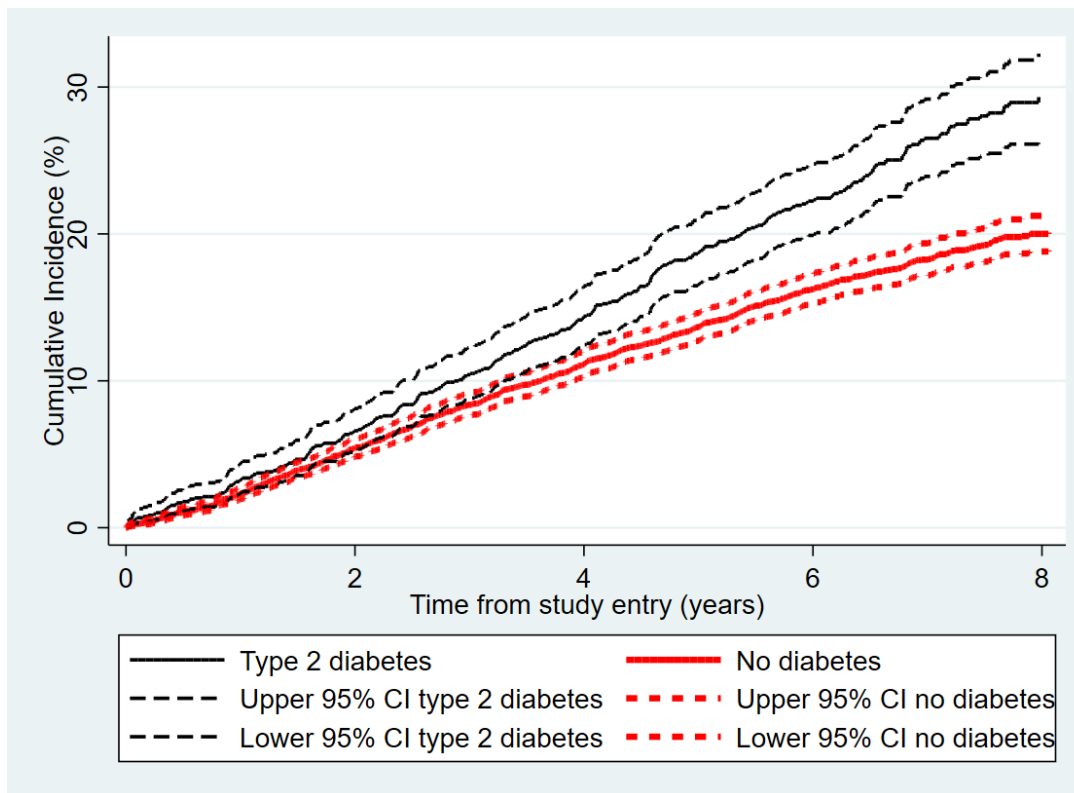
SUPPLEMENTARY DATA

Supplementary Figure 1. a) unadjusted cause-specific hazard ratio for IOL implantation; b) adjusted cause-specific hazard ratio for IOL implantation; c) unadjusted subdistribution hazard ratio for IOL implantation; d) adjusted subdistribution hazard ratio for IOL implantation; e) unadjusted hazard ratio for all-cause death; f) adjusted hazard ratio for all-cause death, in FDS2 participants with type 2 diabetes and their matched counterparts without diabetes by age at census for persons with type 2 diabetes versus no diabetes (reference). Adjustment for baseline age, sex and Charlson's Comorbidity Index.



SUPPLEMENTARY DATA

Supplementary Figure 2. Cumulative incidence function of first IOL implantation for cataract by type 2 diabetes status.



SUPPLEMENTARY DATA

Supplementary Figure 3. a) cause-specific hazard ratios for IOL implantation; b) subdistribution hazard ratios for IOL implantation, in FDS2 participants with type 2 diabetes by age at census (10-year increments) and diabetes duration (5-year increments) versus new onset diabetes (reference).

