

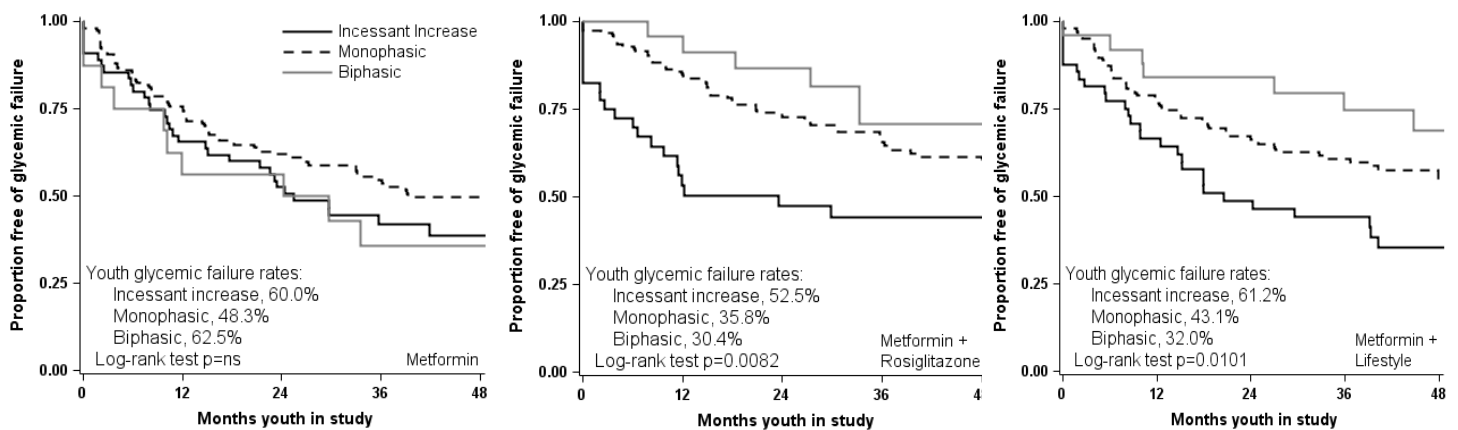
SUPPLEMENTARY DATA

**Supplementary Table S1.** OGTT-glucose-response curve patterns at baseline by treatment group\*

Baseline - N (column %)	Treatment group		
	Metformin Monotherapy (n=222)	Metformin + Rosiglitazone (n=222)	Metformin + Lifestyle (n=218)
<b>OGTT-glucose-response curve</b>			
<b>Incessant Increase</b>	55 (24.8%)	40 (18.0%)	49 (22.5%)
<b>Monophasic</b>	151 (68.0%)	159 (71.6%)	144 (66.1%)
<b>Biphasic</b>	16 (7.2%)	23 (10.4%)	25 (11.5%)

\* No association (p=ns) between curve type and treatment group at baseline

**Supplementary Figure S1.** Survival curves and log-rank tests results for freedom from glycemic failure in TODAY youth on assigned treatment by OGTT-glucose-response curve at baseline within each treatment group: (A) metformin monotherapy, (B) Metformin plus Rosiglitazone, and (C) Metformin plus Lifestyle.\*



No. of Participants

<b>Incessant Increase</b>	55	36	28	14	9	40	19	15	13	7	49	30	22	15	12
<b>Monophasic</b>	151	110	85	59	37	159	129	100	64	41	144	107	89	63	36
<b>Biphasic</b>	16	16	9	5	4	23	22	19	11	7	25	25	21	15	10

\* In Figures B and C, the incessant increase group was significantly different from the biphasic (p=0.0304 and p=0.0122) and monophasic groups (p=0.0062 and p=0.0169), respectively.

SUPPLEMENTARY DATA

**Supplementary Table S2.** OGTT-glucose-response curve at baseline and month 6 in participants with valid OGTT-glucose-response curve data at both times

N (column %)	Baseline (n=662)	Month 6 (n=592)
<b>OGTT-glucose-response curve</b>		
<b>Incessant Increase</b>	144 (21.7%)	120 (20.3%)
<b>Monophasic</b>	454 (68.6%)	406 (68.6%)
<b>Biphasic</b>	64 (9.7%)	66 (11.1%)

**Supplementary Table S3.** Change in OGTT-glucose-response curve patterns from baseline to month 6 in participants with OGTT data available for both baseline and month 6, overall and by treatment group\*

	Month 6			
	Incessant Increase	Monophasic	Biphasic	Overall
Baseline	n (row %)	n (row %)	n (row %)	n
<b>ALL</b>				
<b>Incessant Increase (21.4%)</b>	49 (38.6%)	64 (50.4%)	14 (11.0%)	127
<b>Monophasic (68.4%)</b>	63 (15.6%)	299 (73.8%)	43 (10.6%)	405
<b>Biphasic (10.1%)</b>	8 (13.3%)	43 (71.7%)	9 (15.0%)	60
<b>Overall</b>	120 (20.3%)	406 (68.6%)	66 (11.1%)	592
<b>Metformin monotherapy</b>				
<b>Incessant Increase (24.6%)</b>	16 (32.0%)	28 (56.0%)	6 (12.0%)	50
<b>Monophasic (68.5%)</b>	18 (12.9%)	108 (77.7%)	13 (9.3%)	139
<b>Biphasic (6.9%)</b>	3 (21.4%)	10 (71.4%)	1 (7.1%)	14
<b>Overall</b>	37 (18.2%)	146 (71.9%)	20 (9.9%)	203
<b>Metformin + rosiglitazone</b>				
<b>Incessant Increase (18.6%)</b>	18 (50.0%)	15 (41.7%)	3 (8.3%)	36
<b>Monophasic (69.9%)</b>	20 (14.8%)	107 (79.3%)	8 (5.9%)	135
<b>Biphasic (11.4%)</b>	2 (9.1%)	17 (77.3%)	3 (13.6%)	22
<b>Overall</b>	40 (20.7%)	139 (72.0%)	14 (7.2%)	193
<b>Metformin + intensive lifestyle</b>				
<b>Incessant Increase (20.9%)</b>	15 (36.6%)	21 (51.2%)	5 (12.2%)	41
<b>Monophasic (66.8%)</b>	25 (19.1%)	84 (64.1%)	22 (16.8%)	131
<b>Biphasic (12.2%)</b>	3 (12.5%)	16 (66.7%)	5 (20.8%)	24
<b>Overall</b>	43 (21.9%)	121 (61.7%)	32 (16.3%)	196

\* 50.0% of participants in the metformin+rosiglitazone group went from ‘incessant increase’ at baseline to one of the other two OGTT-glucose-response-curve groups by month 6, vs. 68.0% in the metformin monotherapy (p=0.0869) and 63.4% in the metformin+lifestyle participants (p=0.2221). 41.7% of participants in the metformin+rosiglitazone group went from ‘incessant increase’ at baseline to ‘monophasic’ by month 6, vs. 56.0% in the metformin monotherapy (p=0.1914) and 51.2% in the metformin+lifestyle participants (p=0.4026).

## SUPPLEMENTARY DATA

The writing group was composed of Silva Arslanian (chair), Laure El ghormli, Joon Young Kim, Fida Bacha, Christine Chan, Heba Ismail, Lorraine E Levitt Katz, Lynne Levitsky, Jeanie B Tryggstad, Neil H White.

### Listing of the TODAY Study Group

The following individuals and institutions constitute the TODAY Study Group (\* indicates principal investigator or director):

**CLINICAL CENTERS** **Baylor College of Medicine:** S. McKay\*, M. Haymond\*, B. Anderson, C. Bush, S. Gunn, H. Holden, S.M. Jones, G. Jeha, S. McGirk, S. Thamocharan **Case Western Reserve University:** L. Cuttler\*, E. Abrams, T. Casey, W. Dahms (deceased), C. Ievers-Landis, B. Kaminski, M. Koontz, S. MacLeish, P. McGuigan, S. Narasimhan **Children's Hospital Los Angeles:** M. Geffner\*, V. Barraza, N. Chang, B. Conrad, D. Dreimane, S. Estrada, L. Fisher, E. Fleury-Milfort, S. Hernandez, B. Hollen, F. Kaufman, E. Law, V. Mansilla, D. Miller, C. Muñoz, R. Ortiz, A. Ward, K. Wexler, Y.K. Xu, P. Yasuda **Children's Hospital of Philadelphia:** L. Levitt Katz\*, R. Berkowitz, S. Boyd, B. Johnson, J. Kaplan, C. Keating, C. Lassiter, T. Lipman, G. McGinley, H. McKnight, B. Schwartzman, S. Willi **Children's Hospital of Pittsburgh:** S. Arslanian\*, F. Bacha, S. Foster, B. Galvin, T. Hannon, A. Kriska, I. Libman, M. Marcus, K. Porter, T. Songer, E. Venditti **Columbia University Medical Center:** R. Goland\*, D. Gallagher, P. Kringas, N. Leibel, D. Ng, M. Ovalles, D. Seidman **Joslin Diabetes Center:** L. Laffel\*, A. Goebel-Fabbri, M. Hall, L. Higgins, J. Keady, M. Malloy, K. Milaszewski, L. Rasbach **Massachusetts General Hospital:** D.M. Nathan\*, A. Angelescu, L. Bissett, C. Ciccarelli, L. Delahanty, V. Goldman, O. Hardy, M. Larkin, L. Levitsky, R. McEachern, D. Norman, D. Nwosu, S. Park-Bennett, D. Richards, N. Sherry, B. Steiner **Saint Louis University:** S. Tollefsen\*, S. Carnes, D. Dempsher, D. Flomo, T. Whelan, B. Wolff **State University of New York Upstate Medical University:** R. Weinstock\*, D. Bowerman, S. Bristol, J. Bulger, J. Hartsig, R. Izquierdo, J. Kearns, R. Saletsky, P. Trief **University of Colorado Denver:** P. Zeitler\* (Steering Committee Chair), N. Abramson, A. Bradhurst, N. Celona-Jacobs, J. Higgins, M. Kelsey, G. Klingensmith, K. Nadeau, T. Witten **University of Oklahoma Health Sciences Center:** K. Copeland\* (Steering Committee Vice-Chair), E. Boss, R. Brown, J. Chadwick, L. Chalmers, S. Chernausek, A. Hebensperger, C. Macha, R. Newgent, A. Nordyke, D. Olson, T. Poulsen, L. Pratt, J. Preske, J. Schanuel, S. Sternlof **University of Texas Health Science Center at San Antonio:** J. Lynch\*, N. Amodei, R. Barajas, C. Cody, D. Hale, J. Hernandez, C. Ibarra, E. Morales, S. Rivera, G. Rupert, A. Wauters **Washington University in St Louis:** N. White\*, A. Arbeláez, D. Flomo, J. Jones, T. Jones, M. Sadler, M. Tanner, A. Timpson, R. Welch **Yale University:** S. Caprio\*, M. Grey, C. Guandalini, S. Lavietes, P. Rose, A. Syme, W. Tamborlane

**COORDINATING CENTER** **George Washington University Biostatistics Center:** K. Hirst\*, S. Edelstein, P. Feit, N. Grover, C. Long, L. Pyle

**PROJECT OFFICE** **National Institute of Diabetes and Digestive and Kidney Diseases:** B. Linder\*

**CENTRAL UNITS** **Central Blood Laboratory (Northwest Lipid Research Laboratories, University of Washington):** S.M. Marcovina\*, J. Harting **DEXA Reading Center (University of California at San Francisco):** J. Shepherd\*, B. Fan, L. Marquez, M. Sherman, J. Wang **Diet Assessment Center (University of South Carolina):** M. Nichols\*, E. Mayer-Davis, Y. Liu **Echocardiogram Reading Center (Johns Hopkins University):** J. Lima\*, S. Gidding, J. Puccella, E. Ricketts **Fundus Photography Reading Center (University of Wisconsin):** R. Danis\*, A. Domalpally, A. Goulding, S. Neill, P. Vargo **Lifestyle Program Core (Washington University):** D. Wilfley\*, D. Aldrich-Rasche, K. Franklin, C. Massmann, D. O'Brien, J. Patterson, T. Tibbs, D. Van Buren

SUPPLEMENTARY DATA

**OTHER Hospital for Sick Children, Toronto: M. Palmert Medstar Research Institute, Washington DC: R. Ratner Texas Tech University Health Sciences Center: D. Dremaine University of Florida: J. Silverstein**

**Title:** The Shape of the Glucose Response Curve during an Oral Glucose Tolerance Test: Forerunner of Heightened Glycemic Failure Rates and Accelerated Decline in  $\beta$ -cell Function in TODAY

**Writing Group:**

Arslanian Silva, MD<sup>1</sup>, El ghormli Laure, MS<sup>2</sup>, Kim Joon Young, PhD<sup>1</sup>, Bacha Fida, MD<sup>3</sup>, Chan Christine, MD<sup>4</sup>, Ismail Heba M, MD<sup>1</sup>, Levitt Katz Lorraine E, MD<sup>5</sup>, Levitsky LL, MD<sup>6</sup>, Tryggestad Jeanie B, MD<sup>7</sup>, White Neil H, MD<sup>8</sup>; TODAY Study Group.

**Author Affiliations:**

<sup>1</sup> Children's Hospital of Pittsburgh

<sup>2</sup> George Washington University Biostatistics Center

<sup>3</sup> Texas Children's Hospital, Baylor College of Medicine

<sup>4</sup> University of Colorado Health Science Center

<sup>5</sup> Children's Hospital of Philadelphia

<sup>6</sup> Massachusetts General Hospital for Children

<sup>7</sup> University of Oklahoma Health Sciences Center

<sup>8</sup> Washington University in St. Louis

For the TODAY Study Group\*

\* A listing of the TODAY Study Group is included in the online appendix materials