

SUPPLEMENTARY DATA

Supplementary Table S1. Summary of main safety parameters change in 24 week

		Placebo <i>n</i> =55	Pemafibrate 0.2 mg/day <i>n</i> =54	Pemafibrate 0.4 mg/day <i>n</i> =51
ALT (U/l)	Baseline	33.5±20.8	32.3±18.9	34.3±22.4
	Change	-0.3±18.0	-6.6±13.4	-13.1±20.5
AST (U/l)	Baseline	29.1±13.6 (<i>n</i> =54)	29.2±13.0	31.2±19.8
	Change	-0.1±12.2 (<i>n</i> =54)	-0.2±10.5	-3.5±19.8
γ-GT (U/l)	Baseline	75.7±83.8	63.5±57.6	62.7±54.6
	Change	-5.4±28.7	-27.1±33.9	-37.2±46.1
ALP (U/l)	Baseline	239.9±58.2	244.4±73.6	224.6±52.7
	Change	3.8±28.7	-76.4±50.6	-90.2±39.9
eGFR (ml/min/1.73m ²)	Baseline	73.2±19.4	75.7±14.7	73.8±14.4
	Change	1.4±8.5	-1.9±6.9	-2.8±7.3
Serum creatinine (mg/dl)	Baseline	0.818±0.246	0.799±0.176	0.807±0.194
	Change	-0.013±0.091	0.026±0.073	0.031±0.085
CK (U/l)	Baseline	115.4±46.7	133.5±66.9	129.5±66.8
	Change	-8.4±45.2	9.3±93.7	2.3±45.2

Mean±SD

ALT, alanine aminotransferase; AST, aspartate aminotransferase; γ-GT, gamma-glutamyl transferase; ALP, alkaline phosphatase; CK, creatine kinase.

Supplementary Table S2. Incidence rates of serum creatinine elevation >ULN and ALT elevation >1.5x ULN

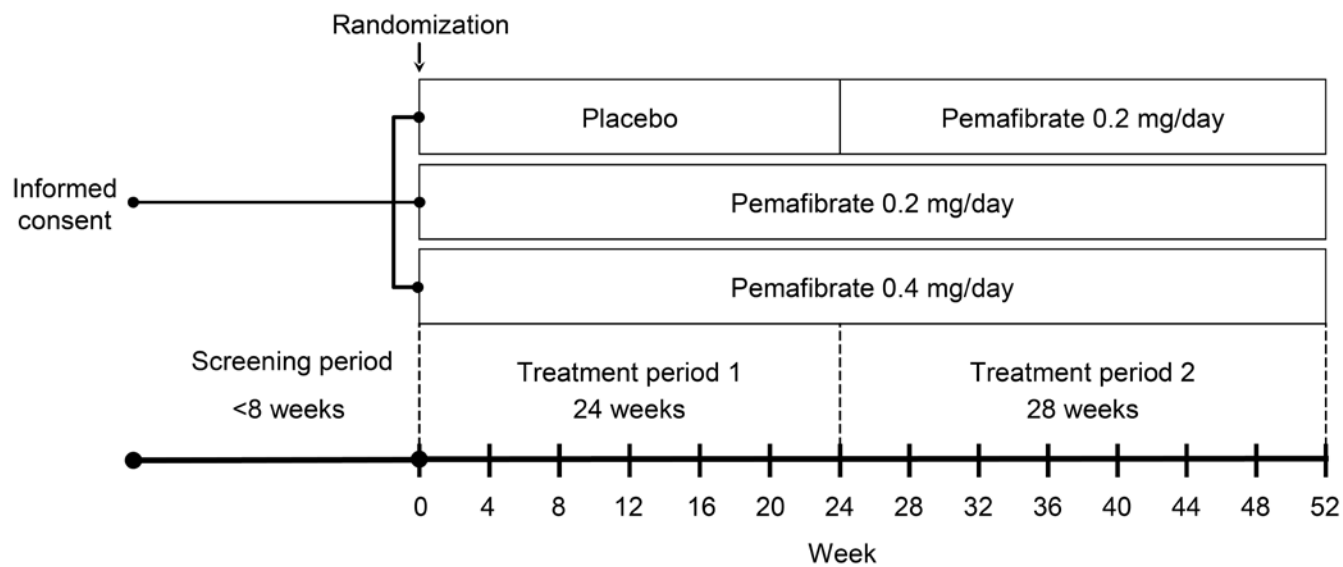
	Post-hoc analysis of the present study		
	Placebo <i>n</i> =57	Pemafibrate 0.2 mg <i>n</i> =54	Pemafibrate 0.4 mg <i>n</i> =55
Serum creatinine >ULN	15 (36.1)	12 (22.2)	11 (20.0)
ALT >1.5x ULN	8 (14.0)	3 (5.6)	1 (1.8)

Data are presented as *n* (%).

ALT, alanine aminotransferase; ULN, upper limit of normal.

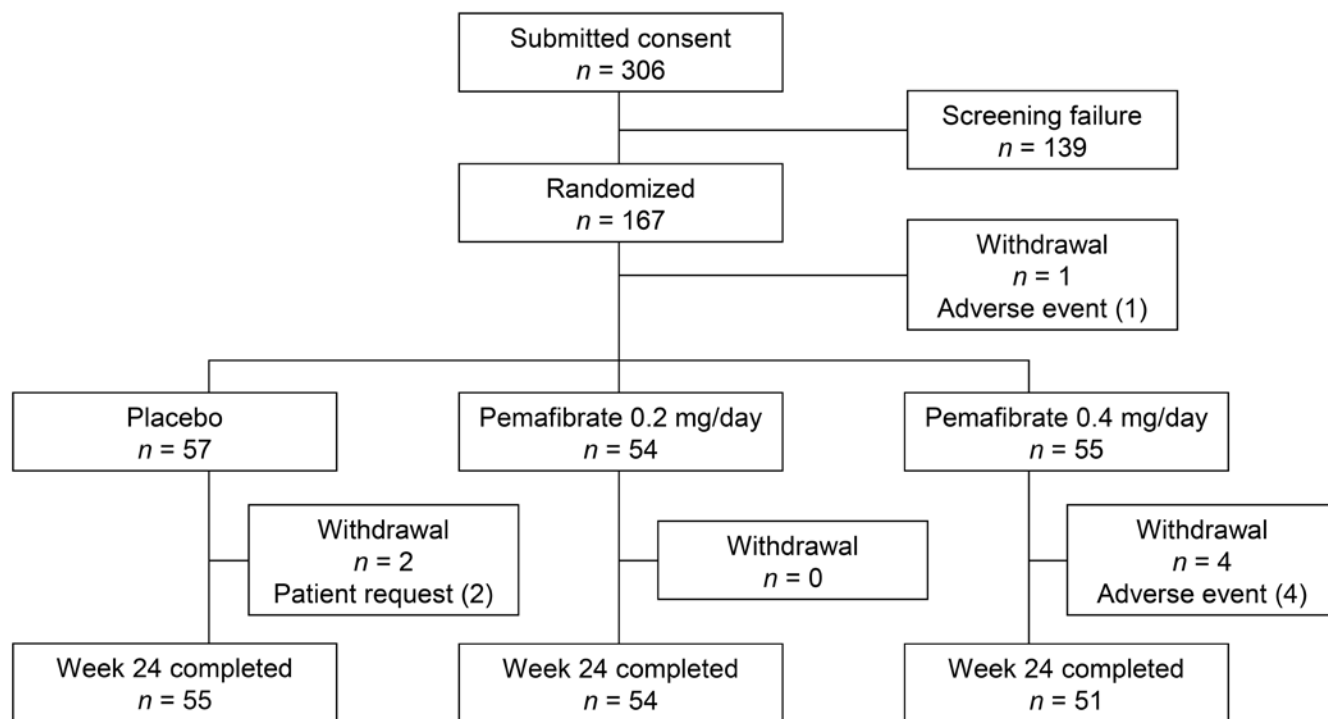
SUPPLEMENTARY DATA

Supplementary Figure. S1. Study design



SUPPLEMENTARY DATA

Supplementary Figure. S2. Disposition of patients



SUPPLEMENTARY DATA

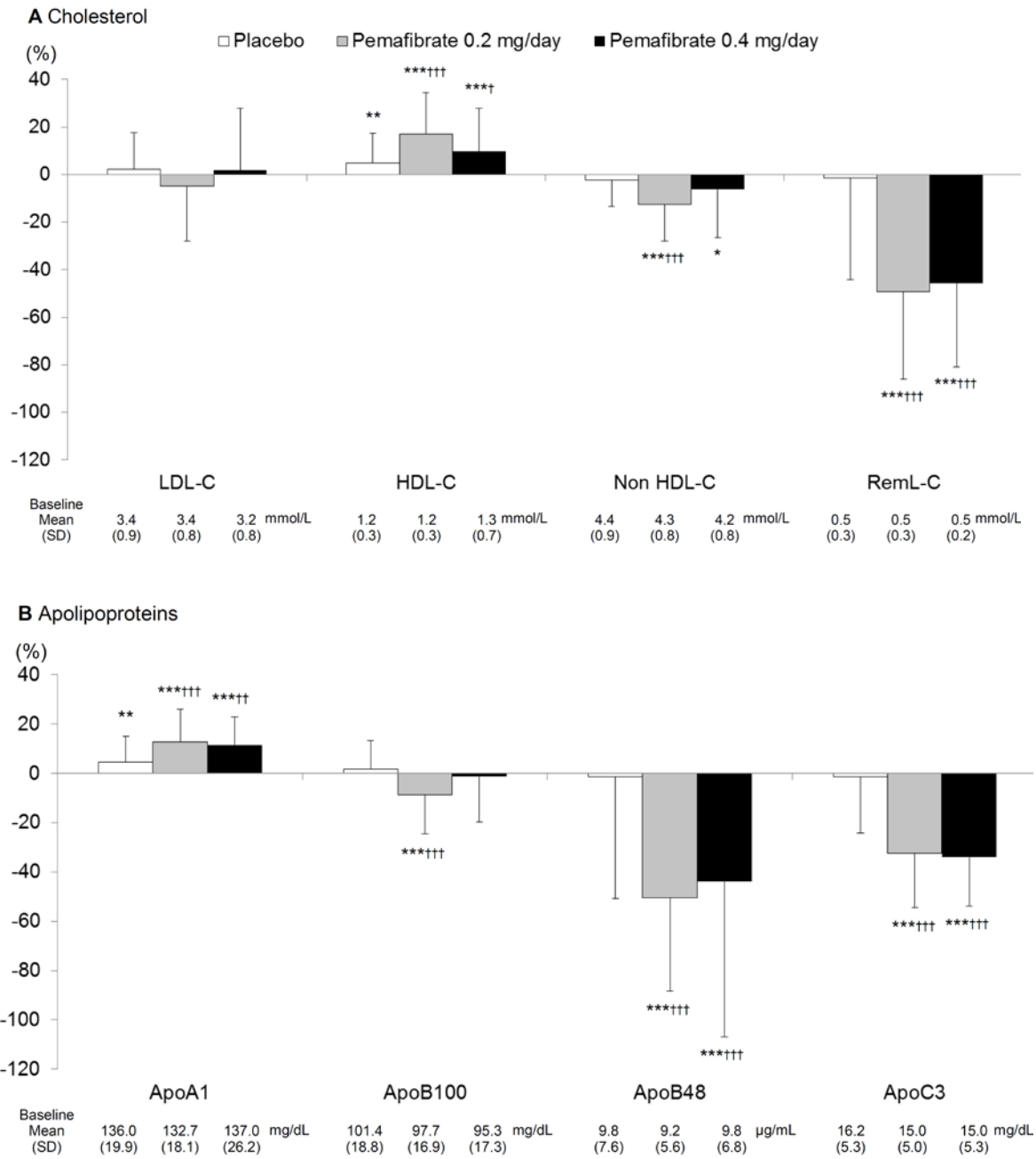
Supplementary Figure. S3. Percentage change in cholesterol (A) and apolipoproteins (B) from baseline to week 24 (LOCF)

Data are presented as mean±SD.

* $P < 0.05$, ** $P < 0.01$, *** $P < 0.001$ vs. baseline by one sample t -test.

† $P < 0.05$, †† $P < 0.01$, ††† $P < 0.001$ vs. placebo by ANCOVA with baseline level as a covariate.

LDL-C, LDL cholesterol; HDL-C, HDL cholesterol; RemL-C, remnant lipoprotein cholesterol; Apo, apolipoprotein; LOCF, last observation carried forward.



SUPPLEMENTARY DATA

Supplementary Figure. S4. Percentage change in LDL-C (a) and HDL-C (b) subclass from baseline to week 12

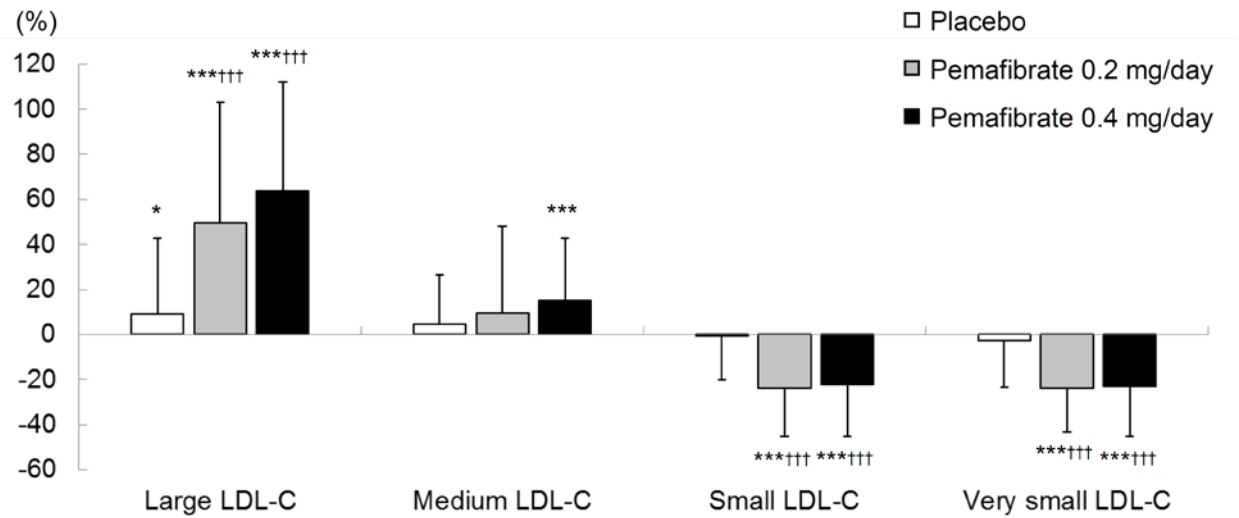
Data are presented as mean±SD.

* $P < 0.05$, ** $P < 0.01$, *** $P < 0.001$ vs. baseline by one sample t -test.

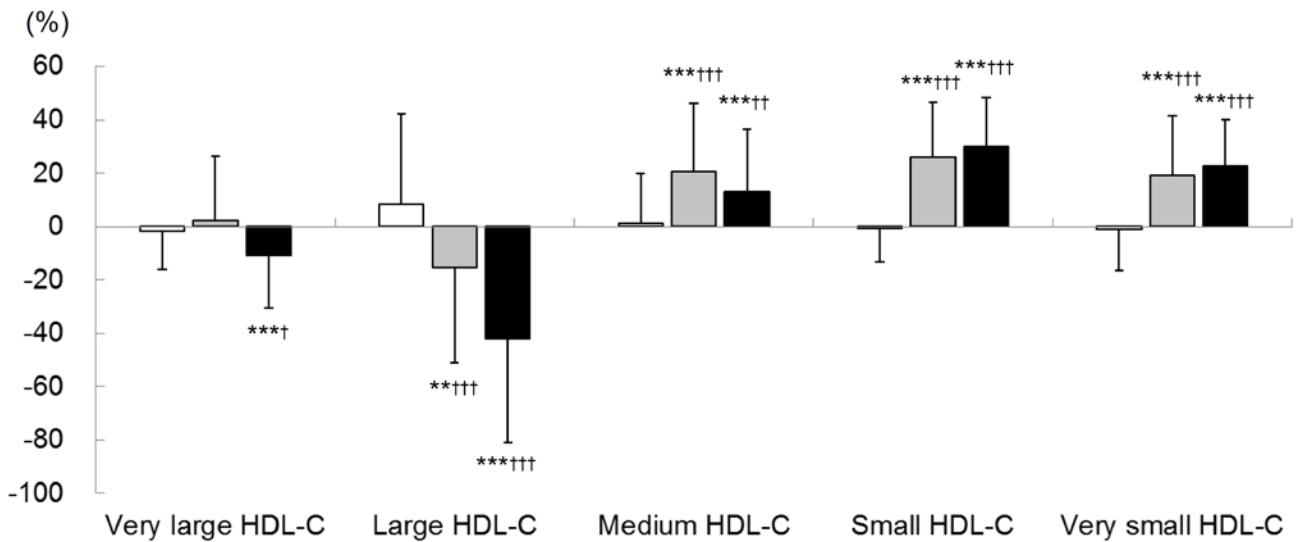
† $P < 0.05$, †† $P < 0.01$, ††† $P < 0.001$ vs. placebo by ANCOVA with baseline level as a covariate.

LDL-C, LDL cholesterol; HDL-C, HDL cholesterol.

A LDL-C subclass



B HDL-C subclass



SUPPLEMENTARY DATA

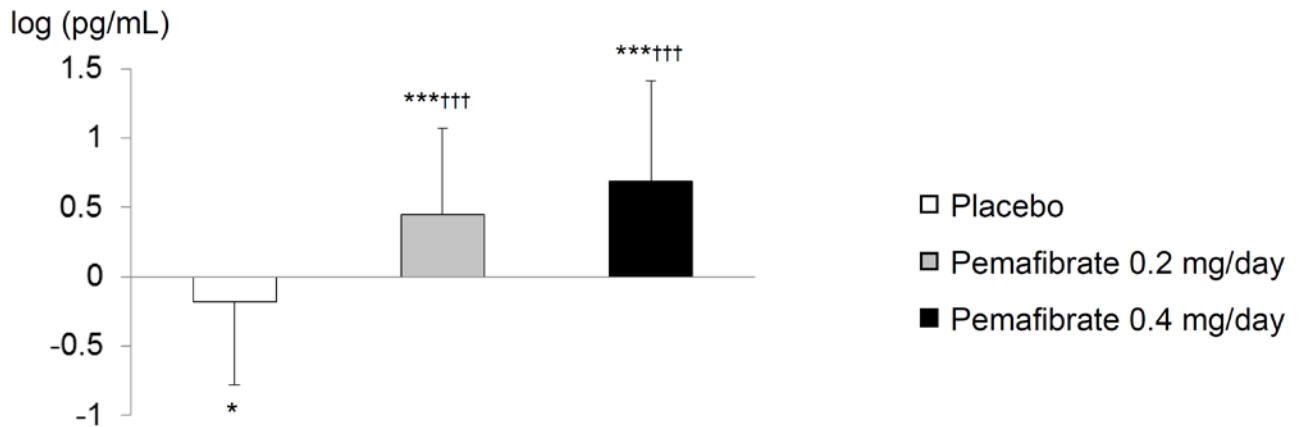
Supplementary Figure. S5. Change in FGF21 from baseline to week 24 (LOCF)

Data are presented as mean±SD.

* $P < 0.05$, ** $P < 0.01$, *** $P < 0.001$ vs. baseline by Wilcoxon signed rank test.

† $P < 0.05$, †† $P < 0.01$, ††† $P < 0.001$ vs. placebo by Wilcoxon rank sum test.

FGF21, fibroblast growth factor 21; LOCF, last observation carried forward.



SUPPLEMENTARY DATA

Supplementary Figure. S6. Postprandial TG, glucose and insulin before and after treatment

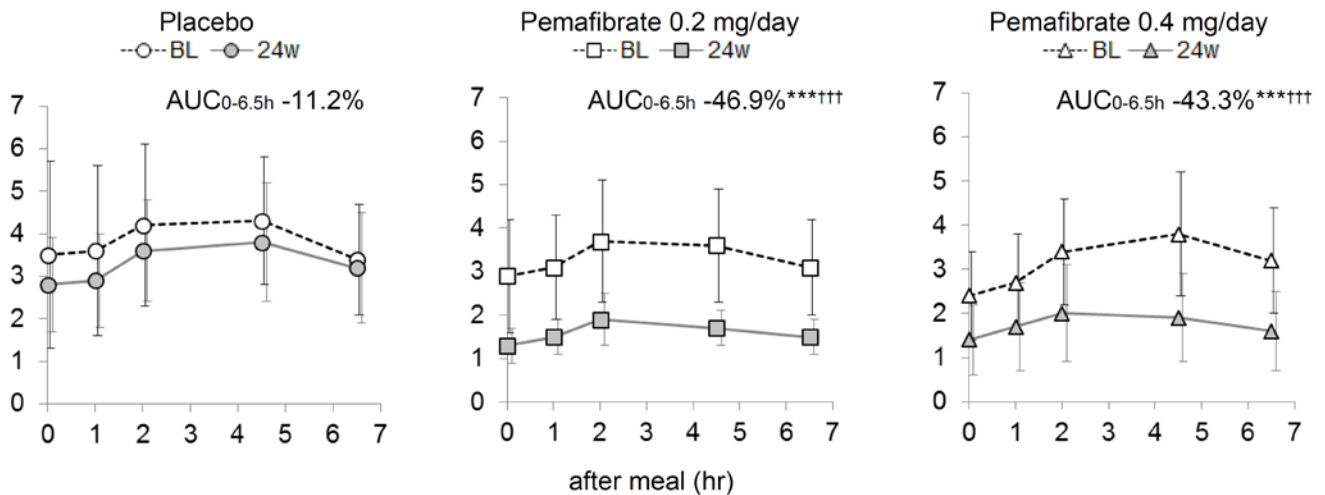
Data are presented as mean±SD for postprandial levels. Percentage changes or changes in AUC_{0-6.5h} from baseline after treatment are presented as mean.

*** $p < 0.001$, ** $p < 0.01$, * $p < 0.05$ vs. baseline by one sample t -test.

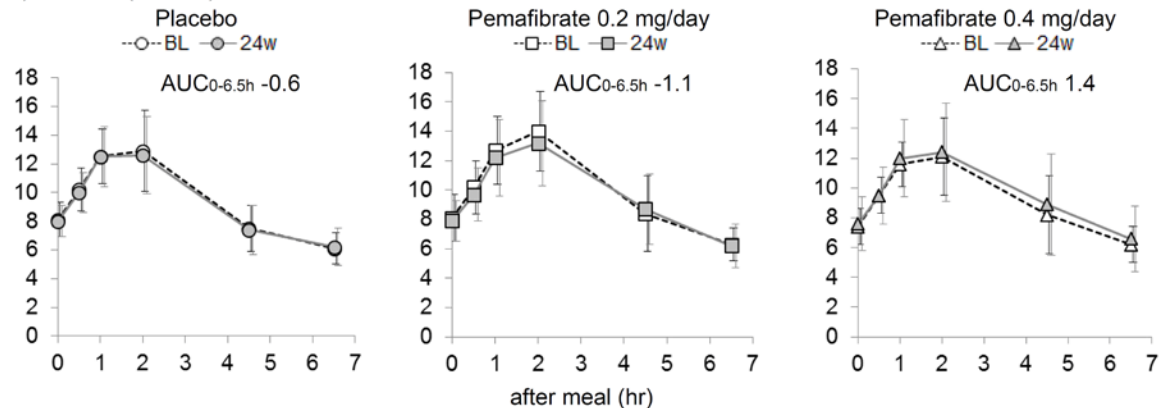
††† $p < 0.001$, †† $p < 0.01$, † $p < 0.05$ vs. placebo by ANCOVA with baseline level as a covariate.

TG, triglyceride.

a) TG (mmol/L)



b) Glucose (mmol/L)



c) Insulin (pmol/L)

