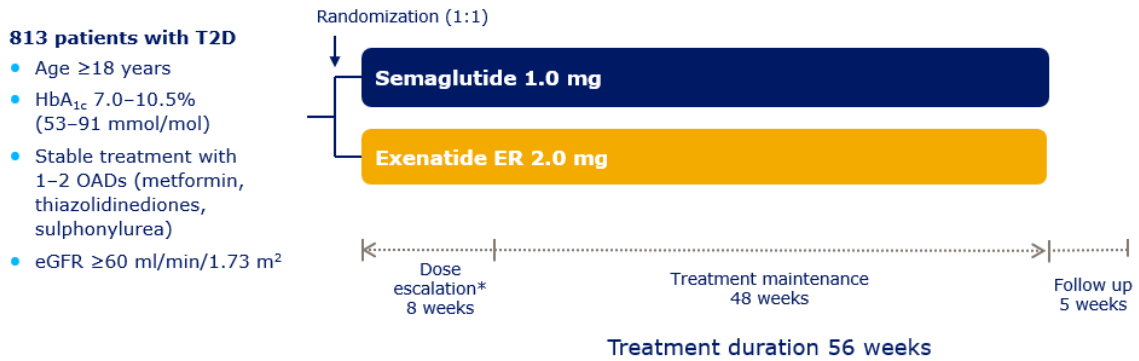


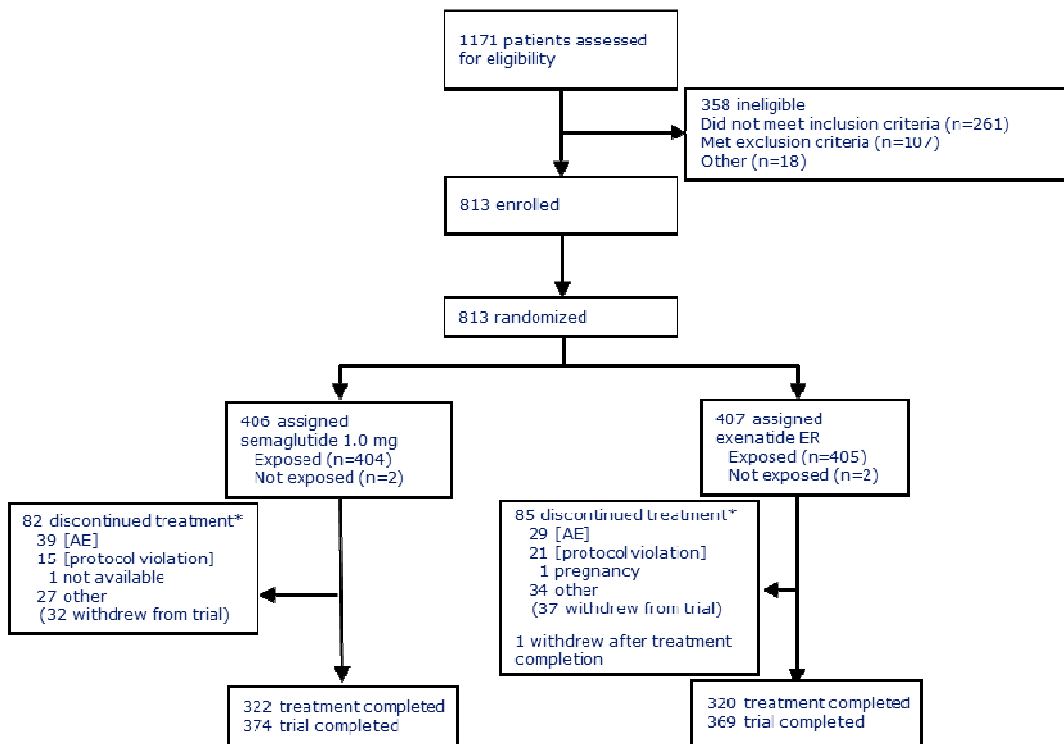
SUPPLEMENTARY DATA

Supplementary Figure S1. Trial design



Semaglutide dose escalation from starting dose of 0.25 mg; dose doubled every 4 weeks until trial maintenance dose achieved. eGFR, estimated glomerular filtration rate; exenatide ER, exenatide extended release; OAD, oral antidiabetic drug.

Supplementary Figure S2. Flow of subjects through the SUSTAIN 3 trial

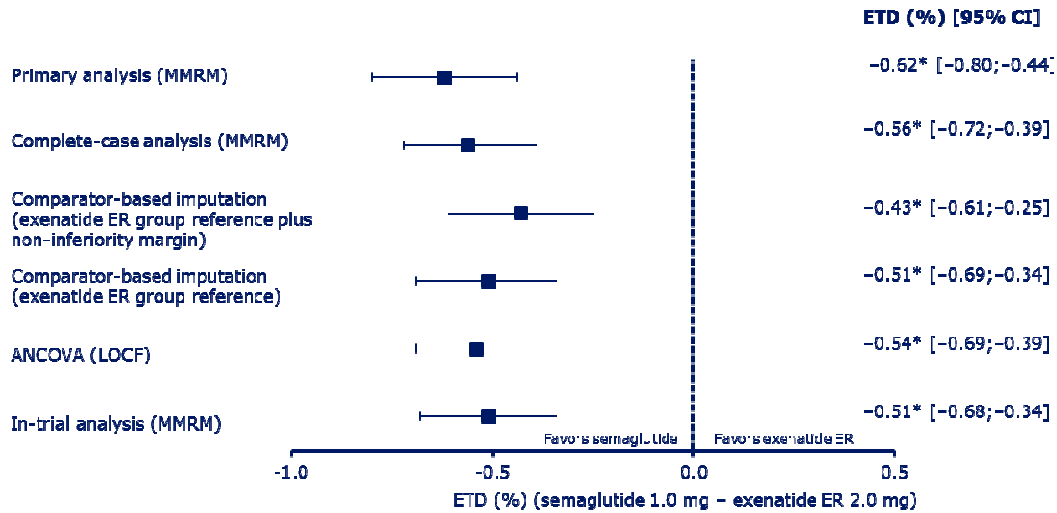


*Reflects primary reason for treatment discontinuation, as judged by the investigator. Numbers in brackets within treatment discontinuation denote subjects who also withdrew from trial, as those who discontinued treatment had the option to continue follow-up. Trial completers were randomized subjects who did not discontinue treatment prematurely, did not withdraw from trial and who attended a follow-up visit. AE, adverse event; exenatide ER, exenatide extended release.

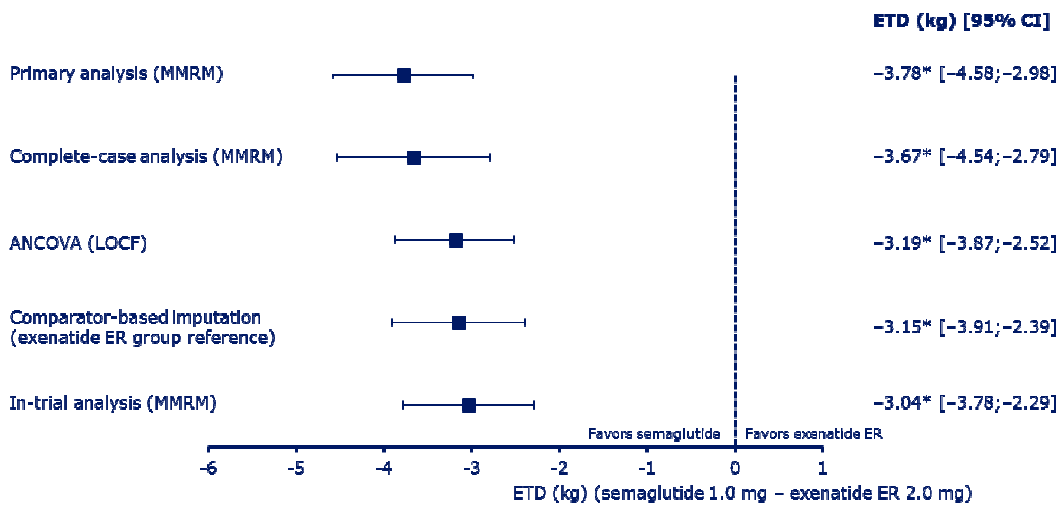
SUPPLEMENTARY DATA

Supplementary Figure S3. Statistical sensitivity analyses for HbA_{1c} (A) and body weight (B)

A.



B.

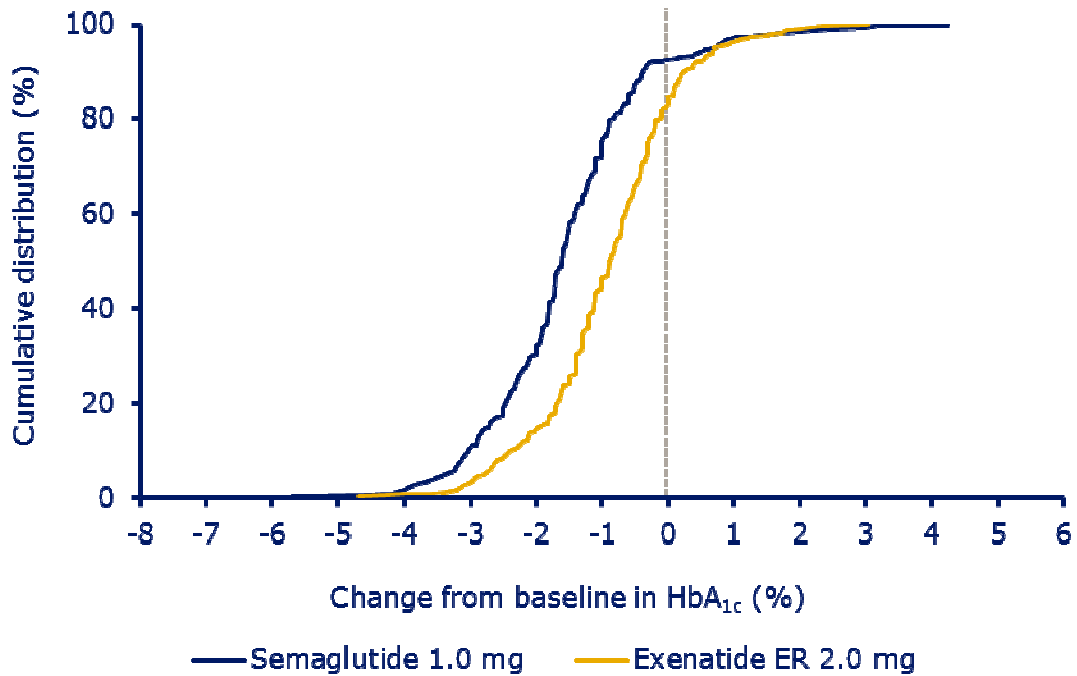


*Indicates significance (p<0.0001). Except for the in-trial analysis, all analyses used 'on-treatment without rescue medication' data from subjects in the full analysis set. ETDs and CIs are from a MMRM analysis, except for the analyses using LOCF and the comparator based imputations which use ANCOVA. ANCOVA, analysis of covariance; CI, confidence interval; ETD, estimated treatment difference; exenatide ER, exenatide extended release; LOCF, last observation carried forward; MMRM, mixed model for repeated measurements analysis.

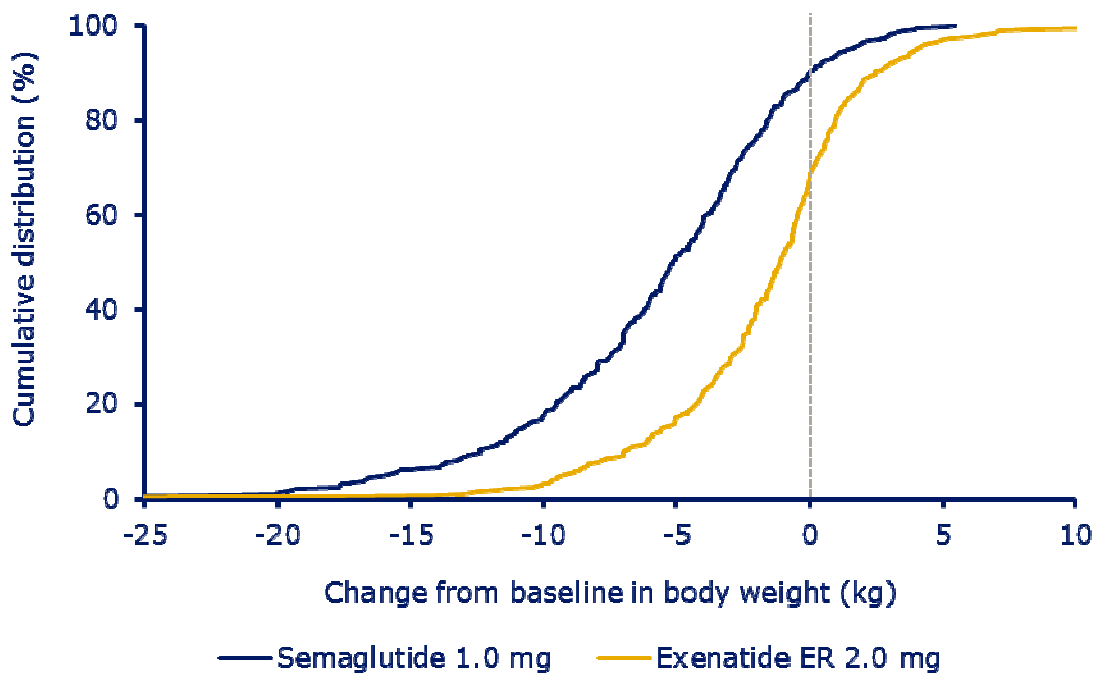
SUPPLEMENTARY DATA

Supplementary Figure S4. Cumulative distribution of change from baseline in HbA_{1c} (A) and (B) body weight at week 56

A.



B.

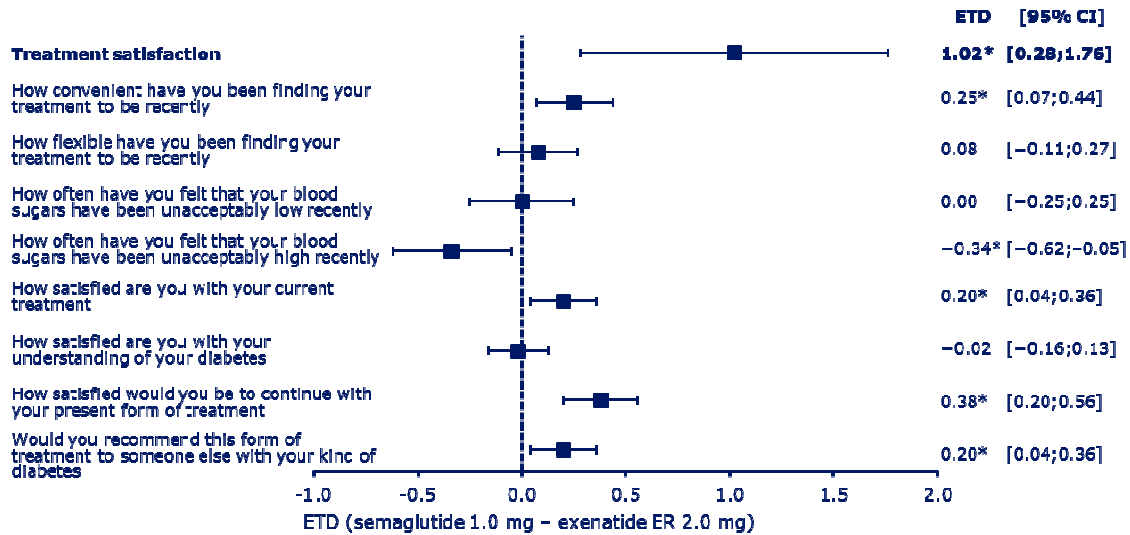


Data are 'on-treatment without rescue medication' from subjects in the full analysis set. Missing data are imputed from a mixed model for repeated measurements analysis. Exenatide ER, exenatide extended release.

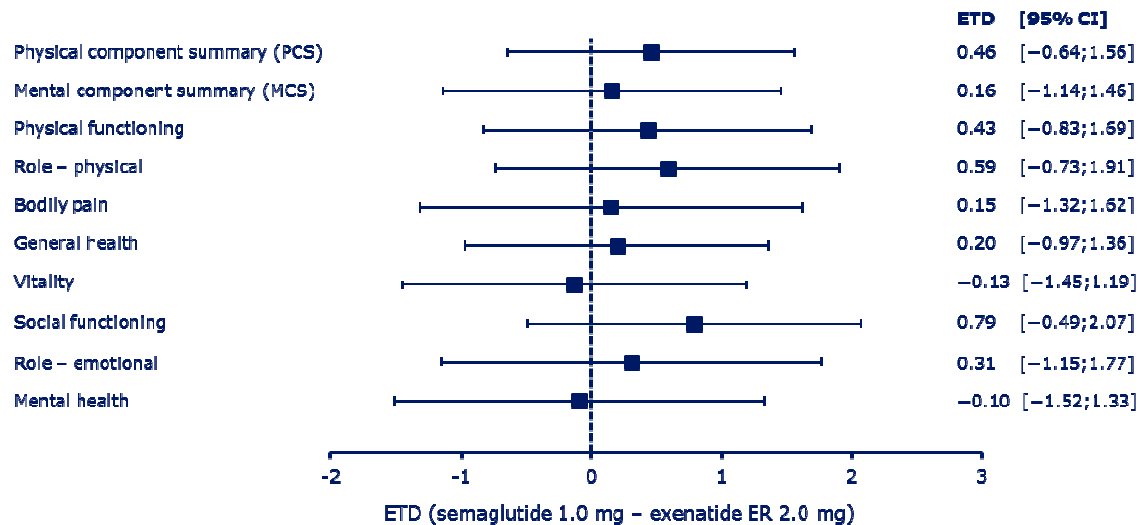
SUPPLEMENTARY DATA

Supplementary Figure S5. Patient-reported outcomes: change in Diabetes Treatment Satisfaction Questionnaire Status (DTSQs) scores (A), and change in 36-item Short-Form Health Survey-V2™ (SF-36v2) scores (B)

A.



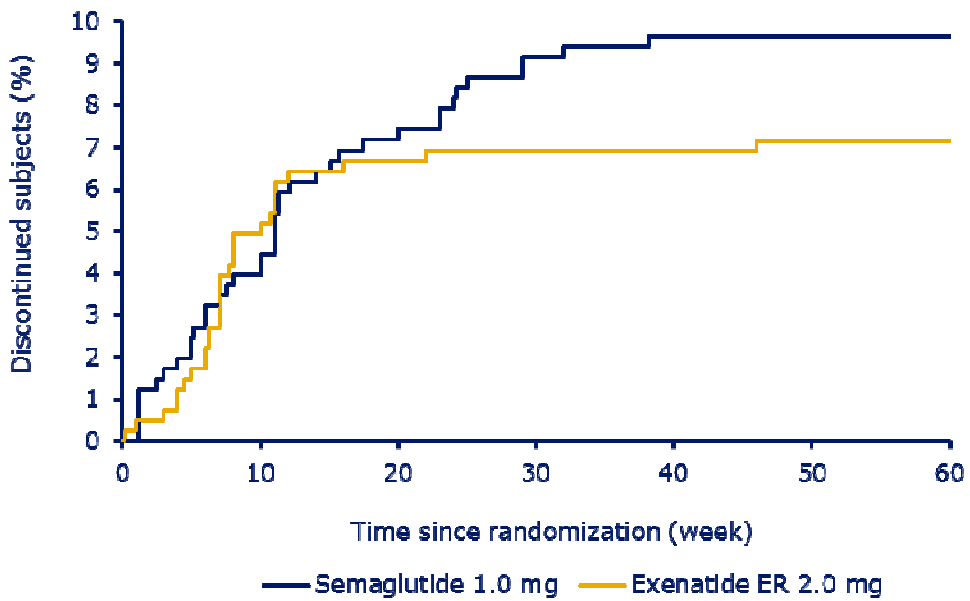
B.



*Indicates significance (p≤0.05). Values are ETDs with 95% CIs from ANCOVA using 'on-treatment without rescue medication' data from subjects in the full analysis set. The 8 DTSQ items are scored from 0–6. Treatment Satisfaction is the sum of 6 of the 8 DTSQ items, and ranges from 0–36. CI, confidence interval; DTSQ, Diabetes Treatment Satisfaction Questionnaire; ETD, estimated treatment difference; exenatide ER, exenatide extended release; MCS, mental component summary; PCS, physical component summary; SF-36v2™, Short Form 36 Health Survey version 2.

SUPPLEMENTARY DATA

Supplementary Figure S6. Cumulative incidence of premature discontinuation of treatment due to adverse events over time

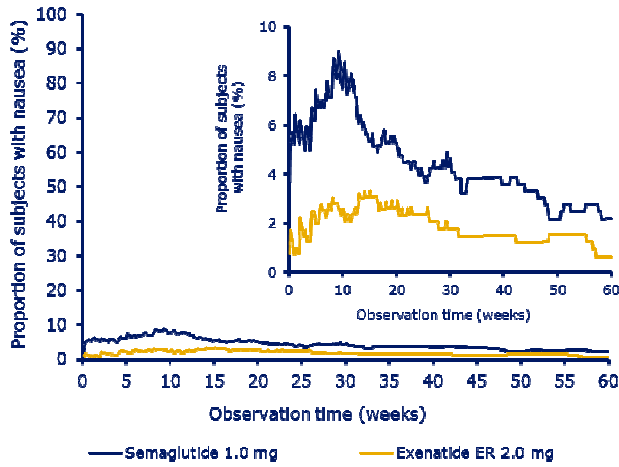


Summary is based on the safety analysis set summarizing treatment-emergent adverse events. Treatment-emergent adverse events include events that are collected from first exposure to the follow-up visit scheduled 5 weeks (+1 week visit window) after the last trial product dose. Exenatide ER, exenatide extended release.

SUPPLEMENTARY DATA

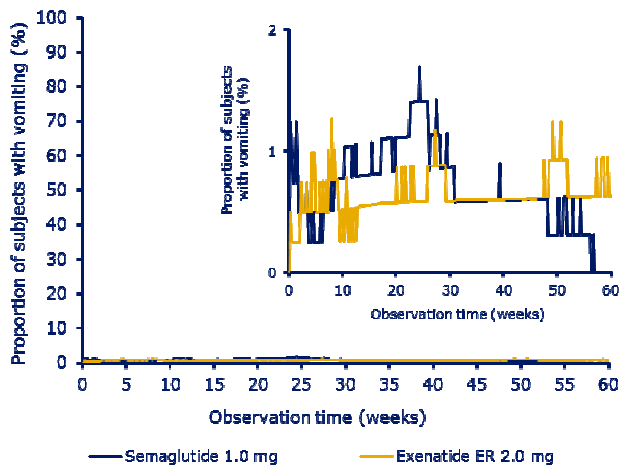
Supplemental Figure S7. Time course of gastrointestinal treatment-emergent adverse events: nausea (A), vomiting (B) and diarrhea (C)

A



	Semaglutide 1.0 mg	Exenatide ER 2.0 mg
Number of events	159	70
Mild (%)	123 (77.4)	50 (71.4)
Moderate (%)	33 (20.8)	18 (25.7)
Severe (%)	3 (1.9)	2 (2.8)

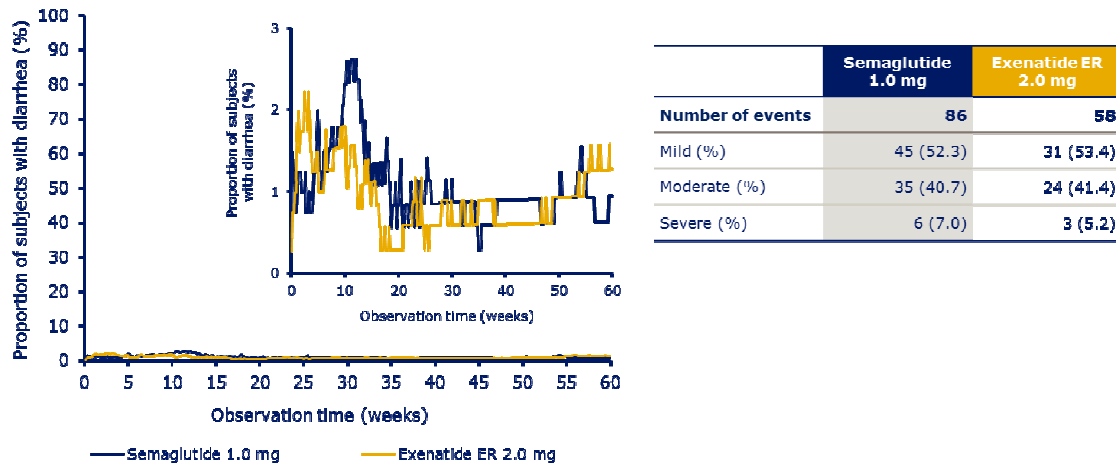
B.



	Semaglutide 1.0 mg	Exenatide ER 2.0 mg
Number of events	37	40
Mild (%)	18 (48.6)	20 (50.0)
Moderate (%)	17 (45.9)	19 (47.5)
Severe (%)	2 (5.4)	1 (2.5)

SUPPLEMENTARY DATA

C.

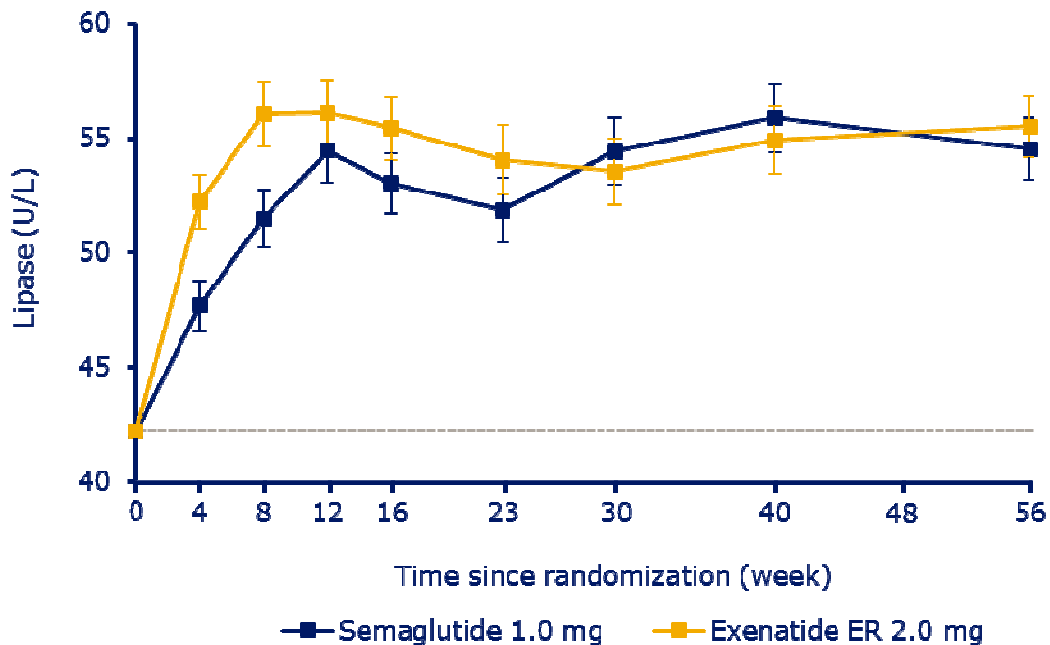


Summary is based on the safety analysis set summarizing treatment-emergent adverse events. Treatment-emergent adverse events include events that are collected from first exposure to the follow-up visit scheduled 5 weeks (+1 week visit window) after the last trial product dose. Exenatide ER, exenatide extended release.

Supplemental Figure S8. Estimated mean lipase (A) and amylase (B) levels by week

A.

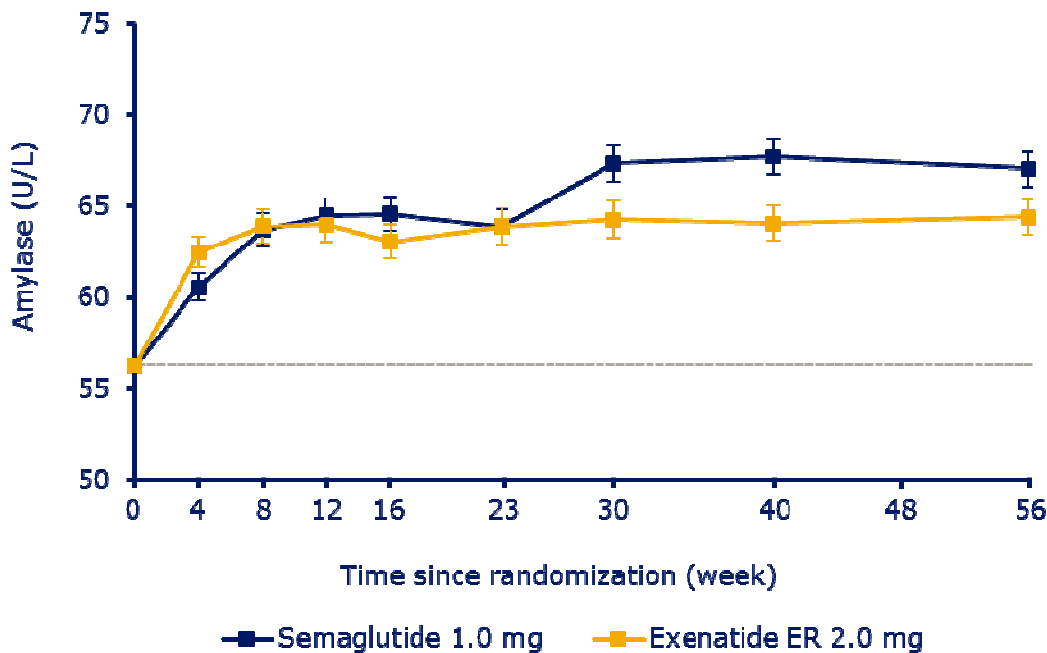
Overall mean at baseline: 42.2 U/L



SUPPLEMENTARY DATA

B.

Overall mean at baseline: 56.2 U/L



Values are estimated geometric means (\pm standard errors) from a mixed model for repeated measurements analysis using 'on-treatment' data from subjects in the safety analysis set. Dotted line indicates the overall geometric mean value at baseline. Exenatide ER, exenatide extended release.

Supplementary Table S1. Full inclusion and exclusion criteria

Inclusion criteria
For an eligible subject, all inclusion criteria must be answered "yes".
Informed consent obtained before any trial-related activities. Trial-related activities are any procedures that are carried out as part of the trial, including activities to determine suitability for the trial Male or female, age ≥ 18 years at the time of signing informed consent. Subjects diagnosed with type 2 diabetes and on stable diabetes treatment with 1–2 OADs (Metformin ≥ 1500 mg or maximum tolerated dose and/or TZD and SUs \geq half of maximum dose allowed according to national label) for at least 90 days prior to screening. Stable is defined as unchanged medication and unchanged dose HbA _{1c} 7.0–10.5% (53 – 91 mmol/mol) (both inclusive)
Exclusion criteria
For an eligible subject, all exclusion criteria must be answered "no".
Known or suspected hypersensitivity to trial product(s) or related products Previous participation in this trial. Participation is defined as signed informed consent Female of childbearing potential who is pregnant, breast feeding or intends to become pregnant or is not using an adequate contraceptive method throughout the trial including the 5 weeks' follow-up period (adequate contraceptive measure as required by local regulation or practice). <i>Argentina:</i> Barrier methods (condom or diaphragm) with spermicide; contraceptive pills or intrauterine devices (IUDs). Birth control methods will be reimbursed by sponsor. <i>Croatia:</i> In women younger than 50 years contraceptives should be used 2 years after the last menstrual period. In women younger than 50 years postmenopausal state can be confirmed, apart from abovementioned amenorrhea lasting >2 years, also as amenorrhea lasting at least 1 year with two

SUPPLEMENTARY DATA

separate measurements of FSH values ≥ 40 mIU, separated by 1 month at least. Germany: Adequate contraceptive measures are implants, injectables, combined oral contraceptives, hormonal intrauterine device, sexual abstinence or vasectomised partner. United Kingdom: Adequate contraceptive measures are defined as established use of oral, injected or implanted hormonal methods of contraception, placement of an intrauterine device or intrauterine system, barrier methods of contraception (condom or occlusive cap with spermicidal foam/gel/film/cream/suppository), male sterilization (where partner is sole partner of subject) or true abstinence (when in line with the preferred and usual lifestyle).

Receipt of any investigational medicinal product within 90 days before screening

Any chronic disorder or severe disease which, in the opinion of the investigator, might jeopardize subject's safety or compliance with the protocol

Treatment with glucose-lowering agent(s) other than stated in the inclusion criteria in a period of 90 days before screening. An exception is short-term treatment (≤ 7 days in total) with insulin in connection with inter-current illness

History of chronic or idiopathic acute pancreatitis

Screening calcitonin value ≥ 50 ng/L (pg/mL)

Personal or family history of medullary thyroid carcinoma (MTC) or multiple endocrine neoplasia syndrome type 2 (MEN 2)

Impaired renal function defined as eGFR < 60 mL/min/1.73 m² per MDRD formula (4 variable version)

Acute coronary or cerebrovascular event within 90 days before randomization

Heart failure, New York Heart Association (NYHA) class IV

Known proliferative retinopathy or maculopathy requiring acute treatment according to the opinion of the investigator

Diagnosis of malignant neoplasm in the previous 5 years (except basal cell skin cancer or squamous cell skin cancer)

Mental inability, unwillingness or language barrier precluding adequate understanding of or compliance with trial procedures

Supplementary Table S2. Event types predefined for event adjudication committee (EAC) review

Predefined events
Fatal events
Acute coronary syndrome
Stroke/transient ischemic attack
Coronary revascularization procedure
Heart failure requiring hospitalization
Neoplasms (excluding thyroid neoplasms)
Thyroid disease including thyroid neoplasm or resulting in thyroidectomy
Actual or suspected pancreatitis

SUPPLEMENTARY DATA

Supplementary Table S3. Details of statistical sensitivity analyses that investigate the impact of missing values

Primary analysis: MMRM analysis based on data from the full analysis set assuming that data are missing at random
MMRM analysis based on data only from subjects who completed treatment and did not receive rescue medication (complete-case analysis)
Comparator-based imputation where either missing records or records obtained after discontinuation from randomized treatment or after initiation of rescue therapy were imputed assuming that subjects were treated with a treatment inferior to exenatide ER by 0.3% from the time of the first missing data point to be imputed (primary outcome only)
Comparator-based imputation as above, but imputations assume that subjects were treated with exenatide ER from the time of the first missing data point
Analysis of covariance (ANCOVA) using imputation of missing values according to the last observation carried forward (LOCF) method based on data from the full analysis set
MMRM analysis based on all data recorded after randomization regardless of adherence to randomized treatment or initiation of rescue therapy (in-trial analysis)

Exenatide ER, exenatide extended release; MMRM, mixed model for repeated measurements analysis

SUPPLEMENTARY DATA

Supplementary Table S4. Additional secondary endpoints

	Overall baseline geometric mean	Semaglutide 1.0 mg Ratio to baseline at Week 56 (SE)	Exenatide ER 2.0 mg Ratio to baseline at Week 56 (SE)	Estimated treatment ratio [95% CI]	p-value
Glucose metabolism					
Plasma glucagon, ng/L	103.9	0.89 (0.01)	0.96 (0.01)	0.92 [0.89; 0.96]	p<0.0001
Pro-insulin, pmol/L	31.1	0.64 (0.02)	0.90 (0.03)	0.71 [0.64; 0.79]	p<0.0001
Pro-insulin/insulin ratio	33.6	0.82 (0.02)	1.01 (0.03)	0.81 [0.74; 0.88]	p<0.0001
HOMA-IR, %	5.8	0.56 (0.02)	0.72 (0.03)	0.77 [0.69; 0.86]	p<0.0001
HOMA-B, %	39.7	1.42 (0.05)	1.31 (0.05)	1.08 [0.97; 1.20]	p=0.1410
Fasting C-peptide, nmol/L	1.0	1.06 (0.02)	1.13 (0.02)	0.94 [0.89; 0.99]	p=0.0145
Fasting insulin, pmol/L	92.7	0.77 (0.02)	0.89 (0.03)	0.87 [0.79; 0.95]	p=0.0016
Lipids					
Free fatty acids, mmol/L	0.8	0.88 (0.02)	0.94 (0.02)	0.93 [0.87; 0.99]	p=0.0342
Total cholesterol, mmol/L	4.7	0.95 (0.01)	0.97 (0.01)	0.98 [0.95; 1.01]	p=0.1441
LDL-cholesterol, mmol/L	2.5	0.95 (0.02)	0.96 (0.02)	0.99 [0.94; 1.04]	p=0.6597
HDL-cholesterol, mmol/L	1.2	1.02 (0.01)	1.00 (0.01)	1.02 [0.99; 1.05]	p=0.1465
VLDL-cholesterol, mmol/L	0.8	0.85 (0.02)	0.97 (0.02)	0.87 [0.82; 0.93]	p<0.0001
Triglycerides, mmol/L	1.8	0.85 (0.02)	0.97 (0.02)	0.87 [0.82; 0.93]	p<0.0001

Estimated treatment ratios from a mixed model for repeated measurements analysis using 'on-treatment without rescue medication' data from subjects in the full analysis set. P-values are two-sided testing the null-hypothesis of no treatment difference. B, beta-cell function; CI, confidence interval; exenatide ER, exenatide extended release; HDL, high-density lipoprotein; HOMA, homeostatic model assessment; IR, insulin resistance; LDL, low-density lipoprotein; SE, standard error; VLDL, very low-density lipoprotein.

SUPPLEMENTARY DATA

Supplementary Table S5. Treatment-emergent serious adverse events (by system organ class)

	Semaglutide 1.0 mg				Exenatide ER 2.0 mg			
	N	(%)	E	R	N	(%)	E	R
N	404				405			
Serious adverse events	38	(9.4)	52	12.6	24	(5.9)	27	6.6
Infections and infestations	6	(1.5)	7	1.7	5	(1.2)	5	1.2
Neoplasms benign, malignant and unspecified (incl. cysts and polyps)	8	(2.0)	8	1.9	2	(0.5)	2	0.5
Gastrointestinal disorders	6	(1.5)	7	1.7	3	(0.7)	3	0.7
Cardiac disorders	3	(0.7)	5	1.2	4	(1.0)	4	1.0
Musculoskeletal and connective tissue disorders	4	(1.0)	4	1.0	2	(0.5)	2	0.5
Renal and urinary disorders	4	(1.0)	4	1.0	2	(0.5)	2	0.5
Surgical and medical procedures	5	(1.2)	5	1.2	1	(0.2)	1	0.2
Nervous system disorders	2	(0.5)	2	0.5	3	(0.7)	3	0.7
General disorders and administration-site conditions	3	(0.7)	3	0.7	0	–	–	–
Hepatobiliary disorders	1	(0.2)	1	0.2	1	(0.2)	1	0.2
Investigations	2	(0.5)	2	0.5	0	–	–	–
Metabolism and nutrition disorders	2	(0.5)	2	0.5	0	–	–	–
Ear and labyrinth disorders	0	–	–	–	1	(0.2)	1	0.2
Injury, poisoning and procedural complications	1	(0.2)	1	0.2	0	–	–	–
Psychiatric disorders	1	(0.2)	1	0.2	0	–	–	–
Respiratory, thoracic and mediastinal disorders	0	–	–	–	1	(0.2)	1	0.2
Skin and subcutaneous tissue disorders	0	–	–	–	1	(0.2)	2	0.5

Treatment-emergent adverse events include events that are collected from first exposure to the follow-up visit scheduled 5 weeks (+1 week visit window) after the last trial product dose. E, number of events; exenatide ER, exenatide extended release; N, number of subjects experiencing at least one event; R, event rate per 100 years of treatment exposure.

SUPPLEMENTARY DATA

Supplementary Table S6. List of investigators

Country Name	Investigator
Argentina	Barbara Krohn, Claudia Fernandez Imaz, Laura Maffei, Andrea Garone, Carlos Wais, Graciela Perez Prados, Marcelo Yantorno, Sonia Sassone, Claudia Baccaro, Gustavo Mariño, Mariano Chahin, Omar Brea, Viviana Garrido, Claudia Goycoa, Leila Angiolini, Alejandro Chertkoff, Ana Chertkoff, M Margossian, J Soler, M Mottola, S Berman, Silvia Orio, M Barbeito
Croatia	Silvija Lesnjakovic, Silvija Canecki Varzic, Ema Drvodelic Sunic, Ivana Sunic-Grcic, Edita Pape-Medvidovic, Branko Novak, Branko Akrap, Marica Jandric Balen
Finland	Kimmo Oksanen, Vesa Järveläinen, Timo Valle, Sakari Sulosaari, Klas Winell, Anniina Lahti, Janne Hukkanen, Markku Savolainen
France	Alix Poussier, Hermione Agopian, Louis Labbe, Sylvaine Clavel, Aurelie Decaudain, Chantal Bully, Elisabeth Drevard, Kader Djebabra, Pierre Serusclat, Didier Gouet, Marc Bernardin, Thierry Godeau, Marc Levy, Laurent Meyer, Boulu-Sanchis, Hervé Grulet, Catherine Petit, Guillaume Charpentier, Marc Lepeut, Nathalie Fauvergue
Germany	Alain Barakat, Helene Willems, Elena Henkel, Ilona Müssig, Wilgard Pohl, Xenia Ganz, Franziska John, Markolf Hanefeld, Karsten Milek, Katrin Krause, Andrea Mölle, Matthias Mölle, Bärbel Hirschhäuser, Rainer Paulus, Julia Thaler, Thomas Schaum, Petra Stübler, Sabine Füllgraf-Horst, Josef Wenzl, Veronika Wenzl-Bauer
Greece	Dimitrios Stoimenis, Georgios Piliandis, Iakovos Avramidis, Christina Spyridonidou, Eleni Lazoudi, John Doupis, Maria Voukali, Ioannis Ioannidis, Andreas Melidonis, Kosmas Charpidis, Vaia Lambadiari, Foteini Kousathana, Georgios Dimitriadis, Triantafyllos Didangelos, Anestis Zantidis, Fotios Iliadis
Italy	Andrea Magistro, Francesca Perticone, Lucilla Monti, PierMarco Piatti, Valentina Crippa, Valentina Villa, Arianna Mazzotti, Luca Montesi, Giulio Marchesini, Marianna Maranghi, Antonio Gallo, Daniela Pergolini, Gloria Ceci, Sebastiano Filetti, Laura Nigi, Elena Ceccarelli, Francesco Dotta, Alessandro Mattina, Silvio Buscemi, Alice Bonura, Roberta Celleno, Roberto Norgiolini, Adi Porat, Giulia Cogni, Valentina Capelli, Luca Chiovato
Netherlands	J.P.W. van den Bergh, R.Y. Velde, G.W.D. Landman, J.C. Kuenen, T. van Bemmelen, E.W. Meesters, L. Elbers, Maaike Gerards, Erik Duschek, M.C.W. Jebbink, W.H. van Houtum, L.J.M. de Heide, H. Waanders, Wouter van Kempen, S. Schipperen, H. Mulder
Serbia	Dragana Bubanja, Jelena Petrovic, Violeta Mladenovic, Aleksandar Djukic, Bojan Vukovic, Jovanka Novakovic Paro, Milena Mitrovic, Branka Kovacev Zavisic, Djordje Popovic, Dragana Tomic Naglic, Ivana Bajkin, Edita Stokic, Ivan Tavcar, Jelena Karajovic, Petar Ristic, Sasa Kikovic, Snezana Kuzmic Jankovic, Tamara Dragovic, Zorana Djuran, Zoran Hajdukovic, Marina Vujovic, Milena Lackovic, Vesna Popovic Radinovic, Zoran Gluivic
Switzerland	Becky Trinh, Eleonora Seelig, Marc Donat, Arthur Knapp, Stefan Bilz, Natalie Rogowski-Lehmann, Martin Litzel, Lea Slahor, Stefan Fischli, Birgit Bach-Kliegel, Philippe Beissner, Alain Matthey, Alain Golay
United Kingdom	Chitrabhanu Ballav, Steven Gough, James Byrne, Matt Capehorn, David Collier, Iqbal Malik, Gary Armstrong, Mahesh Ganapathy, Richard Falk, Alexandra Ward, Anthony Robinson, John Reckless, Mimi Chen, F Tees, J Patrick, Nell Wyatt
United States	Christopher Bogan, Donald DeFrang, Andrew Ahmann, Bethany Klopfenstein, Farahnaz Joarder, Jennifer Cox, Brad White, Bethany Wollam, Jessica Castle, Kathryn Hanavan, Kristin Jahnke, Rebecca Fitch, Maged Ayad, Michael Guice, Nathan Doremus, Khaleida Khan, Nidia Melchor, Adeeba Akhtar, Daima Fanaka Ratcliff, Uniza Ameer, Elizabeth Bretton, Marigene Sharma, Heather Coronado, David Hsi, Candace Percifull, Crystal Cardwell, Jessica White, Lindsay Harrison, Luis Casaubon, Thomas Blevins, Tira Chaicha-Brom, Valerie Espinosa, Page Smith, Louis Chaykin, Michelle Mallitz, Michelle Dowell, Lindsay Bromley, Michael Chen, Nancy Sarpola, Patricia Eshleman, Susan Sanderson, Christopher Chow, Masoud Azizad, Haydee Gutierrez, Julie Toven, Monica Brown, Barry Collins, Johnnie Stevens, Allison Bunn, Lisa Metcalfe, Rutwaj Jotani, Donald Bogardus, George Cornett, Jill Beavins, Morgan Kiefer, Chelsea Schmoll, Christine Bogardus, Christopher Roney, David DeAtkine, Farah Sultan, Gary Boyd, Hayes Williams, James Sosnowchik, Judy Combs, Karolynn Painter, Melissa Martin, Melissa Nichols, Rosylen Quinney, Shellie Talley, Allison Fanelli, Evan Kessler, Michael Parke, Robert Detweiler, Stephanie Shearer, Jennifer Adams, Ajish Pallai, Michael DiGiovanna, Fouzal Azeem, Basharat Ahmad, Michael Robinson, Ramanath Dukkupati, Kanchana Karunaratne, Dean Felker, Talessa Powell, Thomas O'Connor, Kristin Carlton, Vickie McDaniel, Charles Fogarty, Connie McCauley, Diane Roberts, Nicole Crockford, Adeoye Aremu, Almena Free, Louis DiValentin, Vishala Chindalore, Zulfiqar Rana, Monica Cardenas-Gonzalez, Chang-Kon Jin, Kendra Campbell, Lorie Campbell, Rebecca Hazelwood, Sandra Dalton, Wilfredo Grana, Desirae Pocklington, Carlos Herrera, Samuel Rivera-Flores, Christina Valdez, Ethelina Menchaca, Robyn Wilson, Jeffrey Klein, Annette Pangle, Barb Short, Brenda Moore, Kelli Meissner, Margaret Rhee, Michelle Riggs, Sandra Smith, Stacy Merlitti, Holly Dushkin, Mary Beth Manning, John Ziats, Amy Maroun, Cathy Prayner, Kathleen Hoagland, Kathryn Bucur, Kristy Strobl, Reitha Phillips, Sarah Dzigiel, Audrey Lacour, Linda Swee Chun Lin, Mariano Nunez, Miguel Posada, Alondra Martinez, Charita Littles, Gilma Martinez, Rosibel Bustamante, Sandra Smith, Stephanie Alarcon, Tania Hernandez, C. David Bird, Kurt Lesh, William Stone, Eric Caplan, Kerry Riehl, Sarah Johnson, Carl Meisner, Caroline Mbogua, Rachid Alaoui, Florence Toe, Karen Becerra, Stephanie Alarcon, Michael Mikola, Richard Mills, Susan Datta, Alissa Wulf, April Coyne, Erin Driscoll, Heather DuBose, Jessica

SUPPLEMENTARY DATA

Collins, Julie Zapkowski, Sarah Brannock, Alexander Murray, Randal Von Seggern, Richard Tisovec, William Harris, Sharon Debnam, David Smith, Joel Neutel, Jorge Loaiza, April Garcia, Elizabeth Gauss, Madonna Nicolai, Noli Raz, Rebecca Lopez, Susan Bague, Philip Nicol, Brent Nicol, Caroleann Morgan, Joanie Munn, Bertha Cano, Alvaro Ocampo, Laura Ravelo, Manuel Gonzalez, Maydelin Rodriguez, Ivan Vivanco, Marcos Gomez, Maria Cano, Robert DeLuca, Jeffrey Pollock, Karen Laufer, John Forward, Mark Quadrel, Jonathan Condit, Mark Reedy, Laura Shaeffer, Adrian White, Geraldine Patterson, Sarab Alfata, Daniel Canchola, Tearani Williams, Arsenio Columbie, Lester De Leon, Manuel Villaverde, Maria Nualart, Maria Nualart, Janett Jalil, Joaquin Hechavarría, Juan Vasquez, Adian Ladron, Blanca Cuervo, Lilia Curbelo, Marytel Tabares, Yenelis Acosta, Patricia Camacho, Ruben Ayala, Carlos Aguilar, Yalexis Lorenzo, Yarlyeny Alonso, Nuvia Herrera, Barbara Baxter, Marissa Moreno, Nancy De La Cruz, Harold Bays, Barbara Michelle Ritchey, Brittany Conn, Christina Shelton, Danielle Smith, Gezina Micklewright, Kara King, Kathleen Weiter, Melanie Moore, Nichole Nockerts, Noreen Behl, Rebecca Whitehead, Sarah Keiran, Tamara Jackson, Jose Burbano, Melissa Benavides, Daniel Carpman, Jose Lega, Francisco Gutierrez, Humberto Salvador, Anabelle Vazquez, Joe Chehade, Kent Wehmeier, Kent Wehmeier, Marinella Lipinski, Meridith Smith, Angela Shreves, Anthony Lopiccio, David Warfield, Brian Riveland, Narendra Godbole, Ethiopia Gebeyehu, Gina Ciavarella, Karen Wetherell, Michelene (Shelley) Miceli, James Carpenter, Christy Kelln, Rhiannon Strasser, Trinh Doan, Robert Swierupski, Ruth Garcia, Trisha Raban, Michael Guice, Vincent Anthony, Nathan Doremus, Gabriela Luevano, Jennifer Soon, Khaleda Khan, Nidia Melchor, Ana Gutierrez, Bernadette Iguh, Mariano Nunez, Miguel Posada, Charita Littles, Linda Lin, Rosibel Bustamante, Sandra Smith, Anna Vanderheiden, Ildiko Lingvay, Marconi Abreu, Laura Golici, Madhuri Poduri, Sean Lynd, Christin Snyder, James Beard, James Neifing, Fawn Wolf, Scott Grady, Jennifer Murdoch, Tamara Mayfield, Christopher Oldfield, Debra Walland, Anthony Greeson, Pamela Dwan Fellows, Robert Remler, Ramon Ortiz-Carrasquillo, Daisy Santiago, Jinna Santiago, Noemi Garcia, Marina Raikhel, Edith Moya, Kristin Shimazaki, Miriam Arsate, Rajneesh Reddy, Melanie Bentley, Paula Peterson-Warnock, Ciro Reyes, Raul Daza, Marcos Gomez, Beatriz Loor, Evelyn Piloto, Ilierka Rivera, Kirenía Correa, Moica Sanchez, Sandra Leano, Shoshana Robbin, Bryon Boley, Gary Ruoff, Judy Hiatt, Nancy Curran, Raechelle Wilkins, Tina Nelson, Eugene Ryan, John Tapp, Judy Kroulek, Jody Houstrup, Donald Sislen, Karey Conway, Leslie Tharenos, Mary Aubuchon, Ellen Buckley, Senija Dulbic, Alfredo Rodes, Brian Snyder, Claude Sy, Daniel Murak, David Gunther, Lisa Hoffman, Raghupathy Varavenkataraman, Phillip Ostrowski, Linda Cunningham, Theresa Ohlson, Cynthia Strout, Judy Shillito, Mitchell Feller, Yvonne Davis, Alice Buice, Amanda Owen, Carolyn Newton, Elizabeth Tennant, Jan Caldwell, Mary Scesney, Stephanie Peter, Henry Traylor, Robert Ray, Shannon Ray, Stacy Allen, John Speer, Kari Uusinarkaus, Steven Brodie, Larry Norfleet, Stanley Yee, Debra Jones, Janelle Jones, Leah Centanne, Lynda Bumby, Patryce Southern, Donald Hurley, Eveline Waring, Kimberly Argabright, Laura Kinney, Melissa Crisp, Shannon Perry, Eric Wolfson, Muntaz Haque, Cathaline Pearson, Franklin Zieve, Angela Sarna, Andy Lee, Bruce Barker, Diana Taylor, Francis Voegele, Gerald Kremer, Kathleen Provanzana, Kevin Haney, Karen Freyhof, Michael DeSantis, Caroline Keib, David DiCesar, Christina Brassie, Christine Jocko, Deborah Schu, Jennifer Sohl, MaryBeth Condon, Michelle Klick, Sharon Valenti, Roy Hall, Sergio Figueroa, Mark Fitzmaurice, Kristen Howard, Robin Woodruff, Tonya Piper, Wilhelmina Armour, Edgardo Franco-Cotto, Idelisse Balbes-Reyes, Enrique Gonzalez, Vianey Rocha, Naomi Ocaranza, Ronald Harris, John Kennedy, Jose Mendoza-Silveiras, Juan Frias, Stanley Hsia, Jorge Martinez, Blanca Morales, Dina Santiago-Moreno, Rosa Bonilla, Rose Sandoval, Sharon Kelly, Daniel Lorch, Stephen Minton, Gigi Guerrero-Willis, Sarah Anderson, Sanchita Gupta, Aris Nikas, Maria Wilson, Analisa Marie Garcia, Ricardo Vargas, Angel Tropp, Eveline Padilla, Carolina Lovo, Monica Rodriguez, Kyle Patrick, Ann Sun, Phillip Pearlstein, Robert Pearlstein, Julia Niness, Mary Sobotor, Suzanne Montanye, Joseph Risser, Carlos Colunga, Jeffrey Rosen, Eduardo Cianferra, Harold Silberman, Merja Clegg, Ivan Carrasquilla, Rosalind Guest, Carlos Lejarde, John Pinches, Mercedes Samson, Lloyd Lejarde, Adriana Munoz, Mary Grace de Leon, Danielle Metz, David Bruce, Donna Goodall, Gerald Shockey, Jennifer Kocour, Leslie Munson, Lindsay Richardson, Marian Grucky, Robert Laufer, Brittany Wheeler, Callie Naholowaa, Kimberly Osesky, Mara Gardner, Natalie Wiley, Valarie Colores, Nicole Hawking, Trisha Raban, Henry Stamps, Amy Megerle, Hugo Toro, Linda Swee Chun Lin, Miguel Posada, Charita Littles, Lianette Ramos, Cecily Karakashian, Brett Plyer, Mimi Van Der Leden, Benjamin Romanos, Monica Jaffe, Robert Wagner, John Albers, Karen Leadbitter, Dwayne Williams, Wilner Jeudy, Frances Sandford, William Koltun, Jennifer Gill, Mona Hacker, Nicolle Mendez, Asqual Getaneh, Vanita Aroda, Laurie Want, Milajurine Lindsay, Jeffery Alford, Steven Bauer, Larry Berman, D. Eric Bolster, Donald Brandon, Robert Call, Mark Cervi, Sapna Chilka, Myungcho Cho, William Ellison, Andrew Henry, Ronald Hsieh, William Dirkes, Frederick Jenkin, Jalil Khan, Aziz Laurent, Aziz Laurent, Steven Mills, Jesus Navarro, Maria Nualart, Robert Orr, Steve Pearlman, David Pulver, Bruce Seaton, Dan Streja, Raul Tamayo, Alan Tran, Barry Troyan, Martin Van Cleeff, Erik Van Ginkel, Shelley Williams, Mark Yocono, Ronald Gilman, Stephen Bart, Arjun Bhattacharya, Ayers Cermin, Jeffrey Davis, Pedro Dela Rosa, Nan Jiang, Jayna Jones, Sifatour Sayeed, Severino Pimentel, Otis Powell, Celsus Ebba, Michael B. Jones, Anuradha Kantanami, Suzanne Kim, Gary Korff, Kannappan Krishnaswamy, Benjamin Lumicao, Gilbert Jenouri, Justine Magurno, John Hagler, Melanie Mencer-Parks, Francisco Padron, Jorge Paoli-Bruno, Douglas Young, Kim Barbel-Johnson, Elizabeth Burkett, Emilio Castaneda, Christopher Chappel, Steve Choi, Lisa Connery, Cyrus Desouza, Donald Gregory, Steven Katzman, Kevin Longshaw, Jesus Lorites, Gilbert Martinez, Kenneth Maynard, Robert Mosca, Randall Todd Richwine, Antonio Terrelonge, Fadi Bacha, Murray Gordon