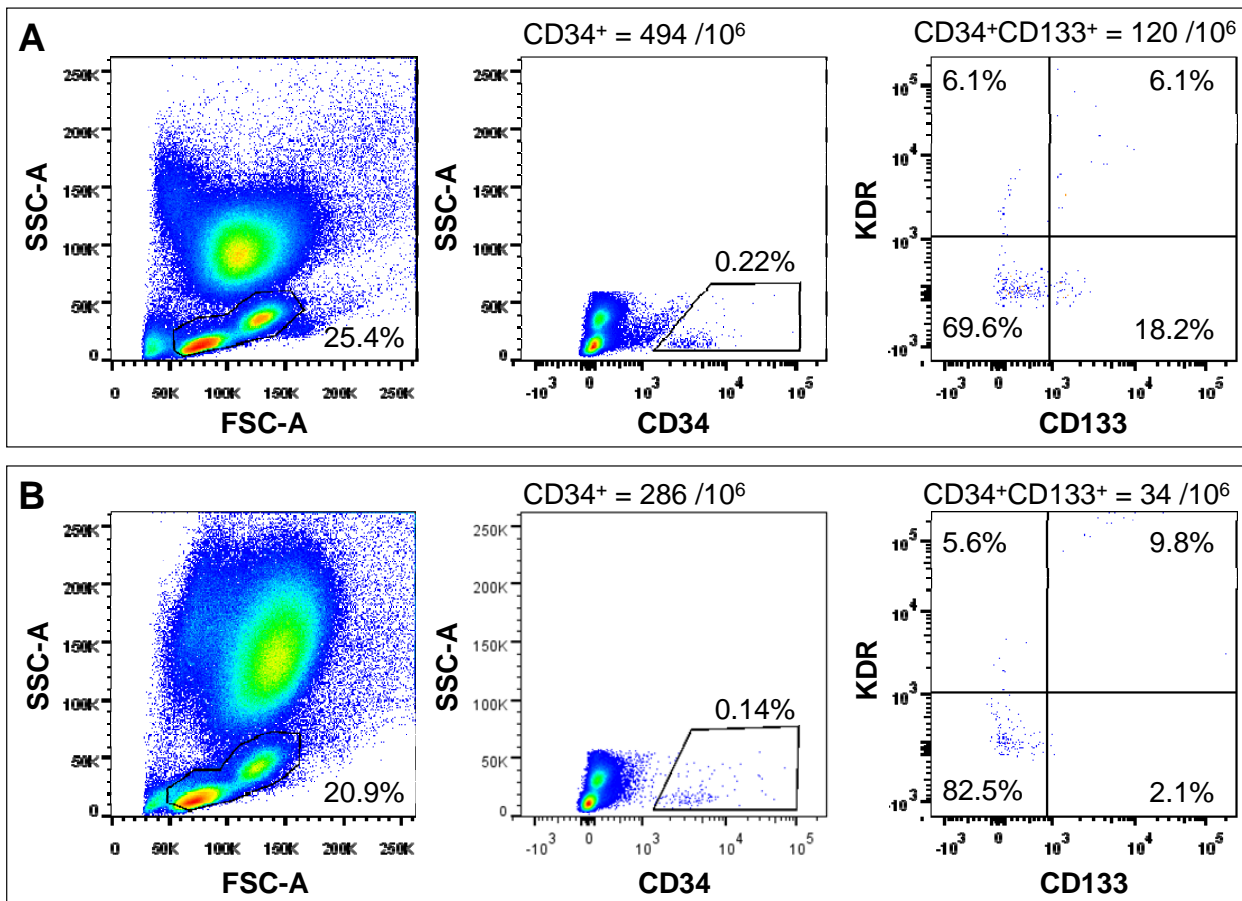


SUPPLEMENTARY DATA

Supplementary Figure S1. Representative FACS plots. Representative analyses of circulating stem/progenitor cell identification and enumeration from a patient without (A) and with (B) cardiovascular events at follow-up. After gating lymphocytes and monocytes in the FSC versus SSC morphologic plot (where 5×10^5 events are shown), total CD34⁺ cells were identified and scored (a parallel analysis was performed for total CD133⁺ cells). Gated CD34⁺ cells were then examined for expression of CD133 and KDR. Here, CD34⁺CD133⁺ cell count derive from the sum of CD34⁺CD133⁺KDR⁺ and CD34⁺CD133⁺KDR⁻ events.



SUPPLEMENTARY DATA

Supplementary Figure S2. Absolute progenitor cell levels and cardiovascular outcomes. A) Progenitor cell levels (mean \pm standard error) in patients divided into those who developed or not developed an event (all events, 3-point MACE, 4-point MACE) at follow-up. B) Annual incidence of all events, 3-point MACE, and 4-point MACE in patients divided according to high or low stem/progenitor cell levels based on the median value. * $p < 0.05$; **significant after BH correction.

