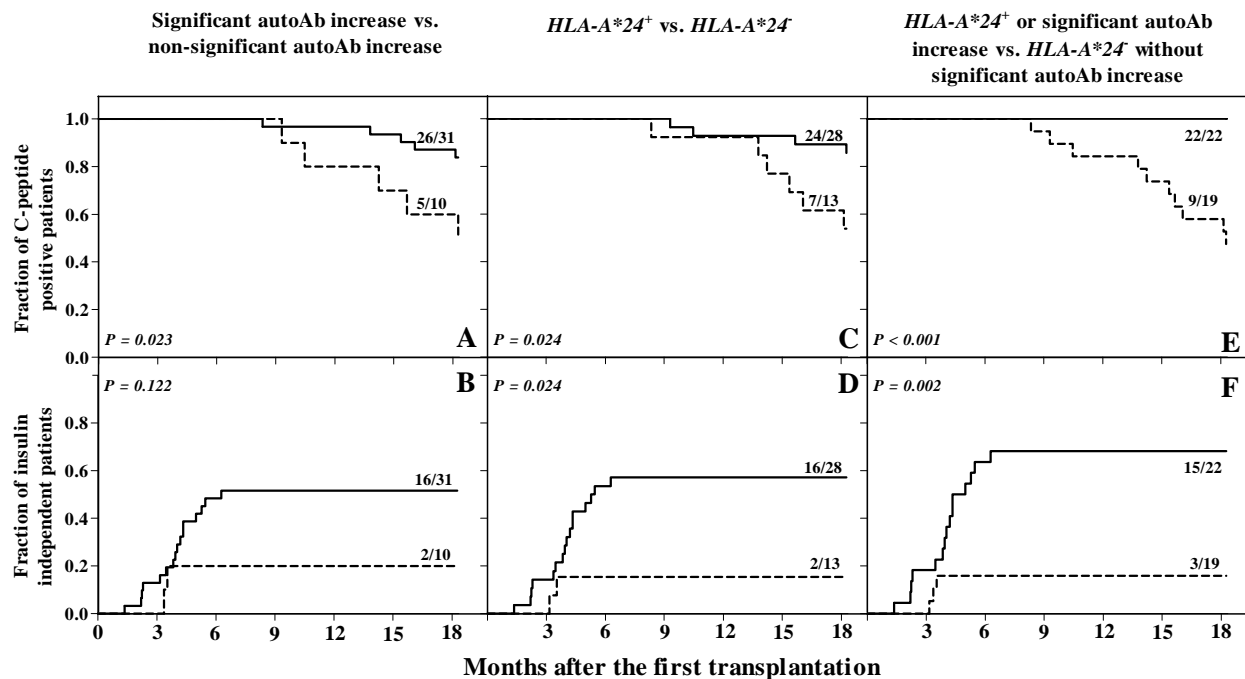


SUPPLEMENTARY DATA

**Supplementary Figure 1.** C-peptide positive survival and development of insulin independence for the patients with (broken line) or without significant autoAb increase (full line) (A and B); *HLA-A\*24*<sup>+</sup> (broken line) vs. *HLA-A\*24*<sup>-</sup> patients (full line) (C and D); and patients with *HLA-A\*24*<sup>+</sup> or a significant autoantibody increase (broken line) vs. *HLA-A\*24*<sup>-</sup> patients without significant autoAb increase (full line) (E and F). Of the 18 patients who became insulin independent none returned to C-peptide negativity within 18 months after the first transplantation. Of the 23 insulin dependent patients, 10 became C-peptide negative within 18 months after the first transplantation (not shown).



## SUPPLEMENTARY DATA

**Supplementary Figure 2.** Venn diagram of the fraction of recipients of an islet allograft who remained C-peptide positive (A) or became insulin independent (B) during the 18 months period after the first implantation according *HLA-A\*24* status and autoAb increase. In binary logistic regression analysis presence of *HLA-A\*24* did not predict a significant early rise in autoantibody levels (GADA or others) post-transplantation ( $P=0.519$ ; not shown).

