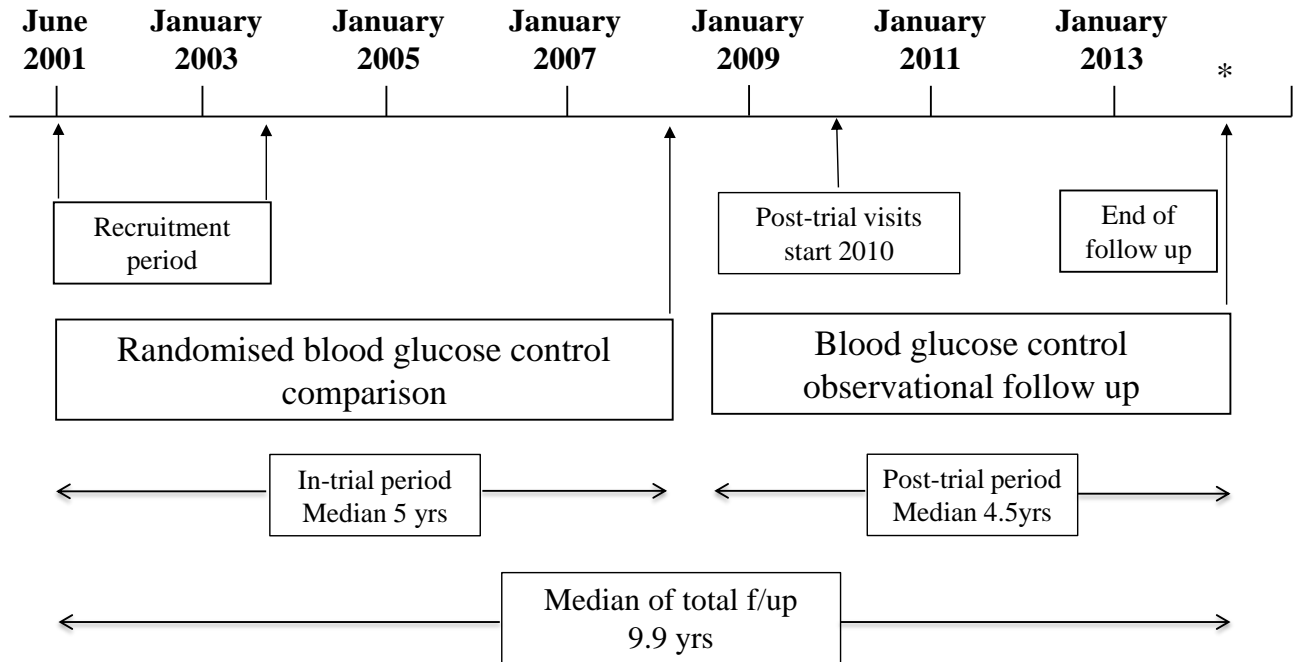


SUPPLEMENTARY DATA

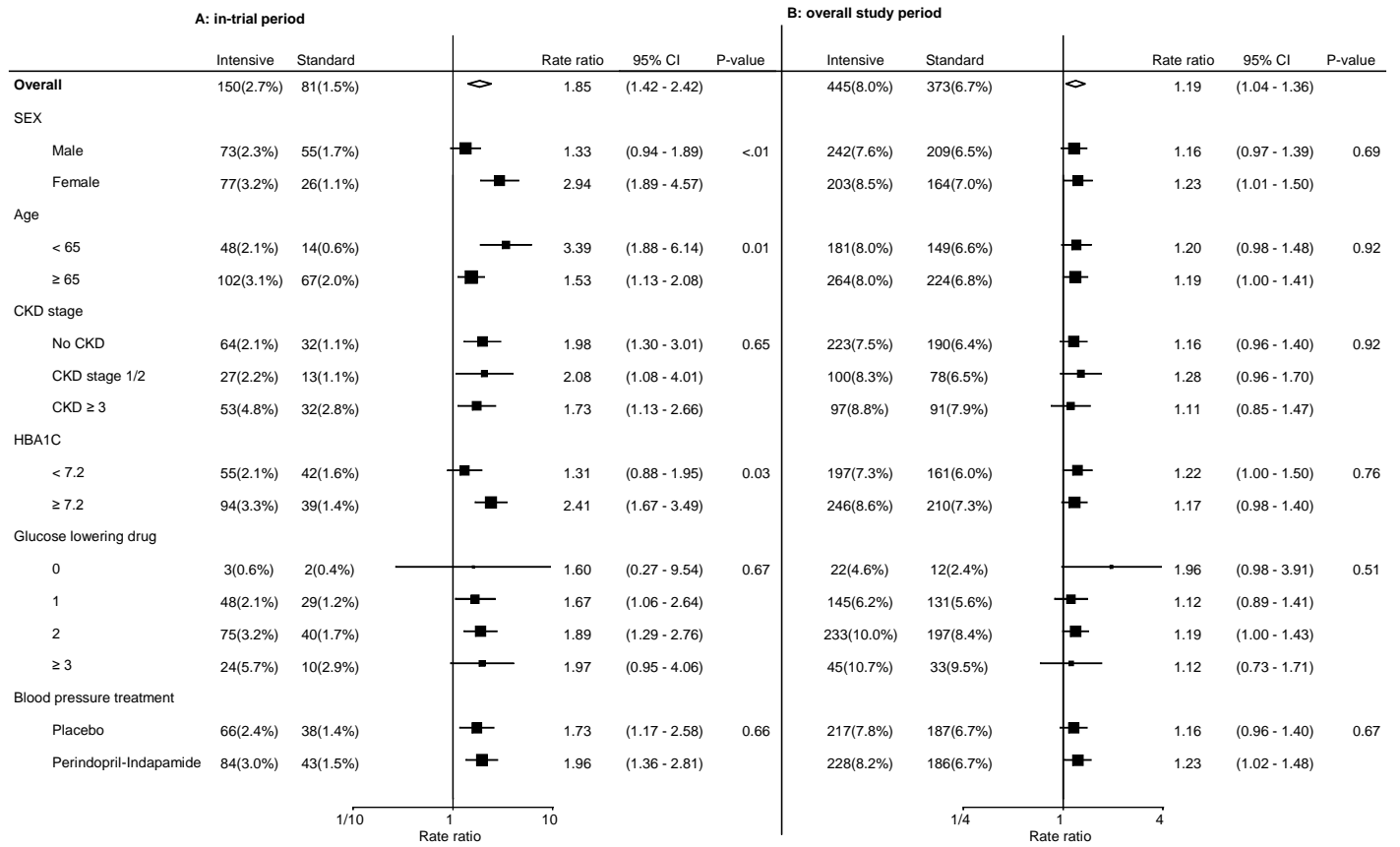
**Supplementary Figure 1.** A schematic representation of the original ADVANCE study and follow-up observational, ADVANCE-ON study timeline.



\* Final visit between 1 January 2013 and 28 February 2014.

SUPPLEMENTARY DATA

**Supplementary Figure 2.** Forest plots of severe hypoglycemia events by randomized subgroups for the “in-trial” ADVANCE period (left half) and for the overall study period (right half). The p-value provided represents the test for heterogeneity between subgroups. CI, confidence interval; CKD, chronic kidney disease; ESKD, end stage kidney disease; HbA1c, glycated hemoglobin A1c.



SUPPLEMENTARY DATA

**Supplementary Table 1.** Glucose lowering and other therapies at of randomized treatment based on subgroup (without CKD), at the first and final visits during post-trial follow-up of ADVANCE-ON

Subgroup: Without CKD Medication	Baseline			Final glucose visit (T2)			Final ADVANCE-ON visit		
	Intensive n= 2986	Standard n= 2949	Overall n= 5935	Intensive n= 2678	Standard n= 2612	Overall n= 5290	Intensive n= 1492	Standard n= 1424	Overall n= 2916
Sulphonylurea (other than Gliclazide MR), n (%)	1873 (62.7)	1814 (61.5)	3687 (62.1)	42 ( 1.6)	1469 (56.2)	1511 (28.6)	299 (20.0)	399 (28.0)	698 (23.9)
Gliclazide MR (Diamicon MR), n (%)	236 ( 7.9)	255 ( 8.6)	491 ( 8.3)	2350 (87.8)	38 ( 1.5)	2388 (45.1)	390 (26.1)	190 (13.3)	580 (19.9)
Sulphonylurea or Gliclazide MR , n (%)	2095 (70.2)	2052 (69.6)	4147 (69.9)	2386 (89.1)	1504 (57.6)	3890 (73.5)	679 (45.5)	586 (41.2)	1265 (43.4)
Sulphonylurea and Gliclazide MR , n (%)	14 ( 0.5)	17 ( 0.6)	31 ( 0.5)	6 ( 0.2)	3 ( 0.1)	9 ( 0.2)	10 ( 0.7)	3 ( 0.2)	13 ( 0.4)
Metformin, n (%)	1776 (59.5)	1773 (60.1)	3549 (59.8)	1999 (74.6)	1771 (67.8)	3770 (71.3)	855 (57.3)	842 (59.1)	1697 (58.2)
Thiazolidinediones, n (%)	97 ( 3.2)	113 ( 3.8)	210 ( 3.5)	461 (17.2)	273 (10.5)	734 (13.9)	83 ( 5.6)	72 ( 5.1)	155 ( 5.3)
Glinide, n (%)	51 ( 1.7)	43 ( 1.5)	94 ( 1.6)	22 ( 0.8)	60 ( 2.3)	82 ( 1.6)	17 ( 1.1)	30 ( 2.1)	47 ( 1.6)
Acarbose, n (%)	269 ( 9.0)	223 ( 7.6)	492 ( 8.3)	471 (17.6)	312 (11.9)	783 (14.8)	99 ( 6.6)	100 ( 7.0)	199 ( 6.8)
Other oral hypoglycaemic, n (%)							300 (20.1)	294 (20.6)	594 (20.4)
Insulin, n (%)	38 ( 1.3)	35 ( 1.2)	73 ( 1.2)	998 (37.3)	566 (21.7)	1564 (29.6)	661 (44.3)	578 (40.6)	1239 (42.5)
Any Glucose lowering drug, n (%)	2705 (90.6)	2659 (90.2)	5364 (90.4)	2566 (95.8)	2396 (91.7)	4962 (93.8)	1365 (91.5)	1294 (90.9)	2659 (91.2)
Glucose lowering drug=0, n (%)	281 ( 9.4)	290 ( 9.8)	571 ( 9.6)	112 ( 4.2)	216 ( 8.3)	328 ( 6.2)	127 ( 8.5)	130 ( 9.1)	257 ( 8.8)
Glucose lowering drug=1, n (%)	1290 (43.2)	1259 (42.7)	2549 (42.9)	353 (13.2)	813 (31.1)	1166 (22.0)	378 (25.3)	429 (30.1)	807 (27.7)
Glucose lowering drug=2, n (%)	1204 (40.3)	1214 (41.2)	2418 (40.7)	1023 (38.2)	1138 (43.6)	2161 (40.9)	673 (45.1)	572 (40.2)	1245 (42.7)
Glucose lowering drug≥3, n (%)	211 ( 7.1)	186 ( 6.3)	397 ( 6.7)	1190 (44.4)	445 (17.0)	1635 (30.9)	314 (21.0)	293 (20.6)	607 (20.8)
Perindopril-Indapamide (Preterax), n (%)				1473 (55.0)	1369 (52.4)	2842 (53.7)	169 (11.3)	144 (10.1)	313 (10.7)
ACE Inhibitors (other than Perindopril-indapamide), n (%)	954 (31.9)	932 (31.6)	1886 (31.8)	163 ( 6.1)	181 ( 6.9)	344 ( 6.5)	398 (26.7)	427 (30.0)	825 (28.3)
Diuretic (other than Perindopril-indapamide), n (%)	271 ( 9.1)	239 ( 8.1)	510 ( 8.6)	304 (11.4)	288 (11.0)	592 (11.2)	277 (18.6)	286 (20.1)	563 (19.3)
Angiotensin-Receptor Blocker, n (%)	159 ( 5.3)	128 ( 4.3)	287 ( 4.8)	296 (11.1)	264 (10.1)	560 (10.6)	315 (21.1)	292 (20.5)	607 (20.8)
CCB overall, n (%)	801 (26.8)	816 (27.7)	1617 (27.2)	871 (32.5)	866 (33.2)	1737 (32.8)	545 (36.5)	537 (37.7)	1082 (37.1)
Beta-blocker, n (%)	702 (23.5)	683 (23.2)	1385 (23.3)	858 (32.0)	783 (30.0)	1641 (31.0)	444 (29.8)	398 (27.9)	842 (28.9)
Alpha-blocker, n (%)							77 ( 5.2)	79 ( 5.5)	156 ( 5.3)
Vasodilators, n (%)							40 ( 2.7)	33 ( 2.3)	73 ( 2.5)
Any Blood pressure lowering drug, n (%)	2083 (69.8)	2084 (70.7)	4167 (70.2)	2329 (87.0)	2272 (87.0)	4601 (87.0)	1140 (76.4)	1115 (78.3)	2255 (77.3)
Blood pressure lowering drug=0, n (%)	903 (30.2)	865 (29.3)	1768 (29.8)	349 (13.0)	340 (13.0)	689 (13.0)	352 (23.6)	309 (21.7)	661 (22.7)
Blood pressure lowering drug=1, n (%)	936 (31.3)	954 (32.3)	1890 (31.8)	686 (25.6)	695 (26.6)	1381 (26.1)	421 (28.2)	431 (30.3)	852 (29.2)
Blood pressure lowering drug=2, n (%)	689 (23.1)	700 (23.7)	1389 (23.4)	701 (26.2)	717 (27.5)	1418 (26.8)	410 (27.5)	404 (28.4)	814 (27.9)
Blood pressure lowering drug≥3, n (%)	458 (15.3)	430 (14.6)	888 (15.0)	942 (35.2)	860 (32.9)	1802 (34.1)	309 (20.7)	280 (19.7)	589 (20.2)

## SUPPLEMENTARY DATA

Statin, n (%)	834 (27.9)	841 (28.5)	1675 (28.2)	1179 (44.0)	1223 (46.8)	2402 (45.4)	758 (50.8)	724 (50.8)	1482 (50.8)
Aspirin, n (%)	1278 (42.8)	1275 (43.2)	2553 (43.0)	1446 (54.0)	1417 (54.2)	2863 (54.1)	724 (48.5)	705 (49.5)	1429 (49.0)
Other anti-platelet agent, n (%)	149 ( 5.0)	112 ( 3.8)	261 ( 4.4)	194 ( 7.2)	132 ( 5.1)	326 ( 6.2)	115 ( 7.7)	95 ( 6.7)	210 ( 7.2)
Oral anticoagulant, n (%)	97 ( 3.2)	88 ( 3.0)	185 ( 3.1)	134 ( 5.0)	109 ( 4.2)	243 ( 4.6)	93 ( 6.2)	79 ( 5.5)	172 ( 5.9)
Nitrates, n (%)	353 (11.8)	340 (11.5)	693 (11.7)	231 ( 8.6)	267 (10.2)	498 ( 9.4)	101 ( 6.8)	113 ( 7.9)	214 ( 7.3)
Hormone Replacement Therapy, n (%)	77 ( 6.6)	79 ( 6.7)	156 ( 6.6)	32 ( 3.0)	44 ( 4.2)	76 ( 3.6)	12 ( 2.0)	13 ( 2.2)	25 ( 2.1)
Dietician referral, n (%)	1107 (37.1)	1059 (35.9)	2166 (36.5)	1177 (44.0)	981 (37.6)	2158 (40.8)	240 (16.1)	232 (16.3)	472 (16.2)
Weight control or exercise program, n (%)	1100 (36.8)	1071 (36.3)	2171 (36.6)	1520 (56.8)	1169 (44.8)	2689 (50.8)	473 (31.7)	443 (31.1)	916 (31.4)
Home blood glucose monitoring, n (%)	1175 (39.4)	1207 (40.9)	2382 (40.1)	2470 (92.2)	1615 (61.8)	4085 (77.2)	943 (63.2)	831 (58.4)	1774 (60.8)

SUPPLEMENTARY DATA

**Supplementary Table 2.** Glucose lowering and other therapies at of randomized treatment based on subgroup (CKD stage 1&2), at the first and final visits during post-trial follow-up of ADVANCE-ON

Subgroup: CKD stage 1&2 Medication	Baseline			Final glucose visit (T2)			Final ADVANCE-ON visit		
	Intensive n= 1202	Standard n= 1202	Overall n= 2404	Intensive n= 1028	Standard n= 1010	Overall n= 2038	Intensive n= 569	Standard n= 513	Overall n= 1082
Sulphonylurea (other than Gliclazide MR), n (%)	794 (66.1)	782 (65.1)	1576 (65.6)	12 ( 1.2)	542 (53.7)	554 (27.2)	93 (16.3)	116 (22.6)	209 (19.3)
Gliclazide MR (Diamicon MR), n (%)	81 ( 6.7)	84 ( 7.0)	165 ( 6.9)	898 (87.4)	19 ( 1.9)	917 (45.0)	114 (20.0)	49 ( 9.6)	163 (15.1)
Sulphonylurea or Gliclazide MR , n (%)	870 (72.4)	856 (71.2)	1726 (71.8)	910 (88.5)	560 (55.4)	1470 (72.1)	203 (35.7)	164 (32.0)	367 (33.9)
Sulphonylurea and Gliclazide MR , n (%)	5 ( 0.4)	10 ( 0.8)	15 ( 0.6)	0 ( 0.0)	1 ( 0.1)	1 ( 0.0)	4 ( 0.7)	1 ( 0.2)	5 ( 0.5)
Metformin, n (%)	801 (66.6)	763 (63.5)	1564 (65.1)	748 (72.8)	623 (61.7)	1371 (67.3)	304 (53.4)	262 (51.1)	566 (52.3)
Thiazolidinediones, n (%)	42 ( 3.5)	43 ( 3.6)	85 ( 3.5)	158 (15.4)	89 ( 8.8)	247 (12.1)	23 ( 4.0)	36 ( 7.0)	59 ( 5.5)
Glinide, n (%)	29 ( 2.4)	17 ( 1.4)	46 ( 1.9)	13 ( 1.3)	37 ( 3.7)	50 ( 2.5)	4 ( 0.7)	9 ( 1.8)	13 ( 1.2)
Acarbose, n (%)	118 ( 9.8)	115 ( 9.6)	233 ( 9.7)	240 (23.3)	138 (13.7)	378 (18.5)	38 ( 6.7)	29 ( 5.7)	67 ( 6.2)
Other oral hypoglycaemic, n (%)							145 (25.5)	138 (26.9)	283 (26.2)
Insulin, n (%)	22 ( 1.8)	18 ( 1.5)	40 ( 1.7)	504 (49.0)	300 (29.7)	804 (39.5)	313 (55.0)	262 (51.1)	575 (53.1)
Any Glucose lowering drug, n (%)	1125 (93.6)	1115 (92.8)	2240 (93.2)	996 (96.9)	932 (92.3)	1928 (94.6)	528 (92.8)	481 (93.8)	1009 (93.3)
Glucose lowering drug=0, n (%)	77 ( 6.4)	87 ( 7.2)	164 ( 6.8)	32 ( 3.1)	78 ( 7.7)	110 ( 5.4)	41 ( 7.2)	32 ( 6.2)	73 ( 6.7)
Glucose lowering drug=1, n (%)	477 (39.7)	494 (41.1)	971 (40.4)	110 (10.7)	305 (30.2)	415 (20.4)	152 (26.7)	164 (32.0)	316 (29.2)
Glucose lowering drug=2, n (%)	541 (45.0)	542 (45.1)	1083 (45.0)	354 (34.4)	456 (45.1)	810 (39.7)	258 (45.3)	230 (44.8)	488 (45.1)
Glucose lowering drug≥3, n (%)	107 ( 8.9)	79 ( 6.6)	186 ( 7.7)	532 (51.8)	171 (16.9)	703 (34.5)	118 (20.7)	87 (17.0)	205 (18.9)
Perindopril-Indapamide (Preterax), n (%)	102 ( 8.5)	115 ( 9.6)	217 ( 9.0)	618 (60.1)	567 (56.1)	1185 (58.1)	53 ( 9.3)	39 ( 7.6)	92 ( 8.5)
ACE Inhibitors (other than Perindopril-indapamide), n (%)	422 (35.1)	397 (33.0)	819 (34.1)	60 ( 5.8)	49 ( 4.9)	109 ( 5.3)	153 (26.9)	129 (25.1)	282 (26.1)
Diuretic (other than Perindopril-indapamide), n (%)	112 ( 9.3)	101 ( 8.4)	213 ( 8.9)	137 (13.3)	125 (12.4)	262 (12.9)	134 (23.6)	102 (19.9)	236 (21.8)
Angiotensin-Receptor Blocker, n (%)	60 ( 5.0)	74 ( 6.2)	134 ( 5.6)	130 (12.6)	150 (14.9)	280 (13.7)	127 (22.3)	122 (23.8)	249 (23.0)
CCB overall, n (%)	424 (35.3)	430 (35.8)	854 (35.5)	411 (40.0)	397 (39.3)	808 (39.6)	270 (47.5)	246 (48.0)	516 (47.7)
Beta-blocker, n (%)	262 (21.8)	253 (21.0)	515 (21.4)	315 (30.6)	305 (30.2)	620 (30.4)	151 (26.5)	122 (23.8)	273 (25.2)
Alpha-blocker, n (%)							42 ( 7.4)	22 ( 4.3)	64 ( 5.9)
Vasodilators, n (%)							21 ( 3.7)	16 ( 3.1)	37 ( 3.4)
Any Blood pressure lowering drug, n (%)	943 (78.5)	928 (77.2)	1871 (77.8)	948 (92.2)	911 (90.2)	1859 (91.2)	453 (79.6)	413 (80.5)	866 (80.0)
Blood pressure lowering drug=0, n (%)	259 (21.5)	274 (22.8)	533 (22.2)	80 ( 7.8)	99 ( 9.8)	179 ( 8.8)	116 (20.4)	100 (19.5)	216 (20.0)
Blood pressure lowering drug=1, n (%)	440 (36.6)	428 (35.6)	868 (36.1)	233 (22.7)	233 (23.1)	466 (22.9)	155 (27.2)	169 (32.9)	324 (29.9)
Blood pressure lowering drug=2, n (%)	307 (25.5)	292 (24.3)	599 (24.9)	314 (30.5)	300 (29.7)	614 (30.1)	161 (28.3)	142 (27.7)	303 (28.0)
Blood pressure lowering drug≥3, n (%)	196 (16.3)	208 (17.3)	404 (16.8)	401 (39.0)	378 (37.4)	779 (38.2)	137 (24.1)	102 (19.9)	239 (22.1)

## SUPPLEMENTARY DATA

Statin, n (%)	310 (25.8)	304 (25.3)	614 (25.5)	423 (41.1)	389 (38.5)	812 (39.8)	258 (45.3)	212 (41.3)	470 (43.4)
Aspirin, n (%)	535 (44.5)	496 (41.3)	1031 (42.9)	567 (55.2)	489 (48.4)	1056 (51.8)	302 (53.1)	242 (47.2)	544 (50.3)
Other anti-platelet agent, n (%)	36 (3.0)	42 (3.5)	78 (3.2)	62 (6.0)	65 (6.4)	127 (6.2)	37 (6.5)	35 (6.8)	72 (6.7)
Oral anticoagulant, n (%)	42 (3.5)	41 (3.4)	83 (3.5)	65 (6.3)	56 (5.5)	121 (5.9)	34 (6.0)	28 (5.5)	62 (5.7)
Nitrates, n (%)	161 (13.4)	145 (12.1)	306 (12.7)	120 (11.7)	115 (11.4)	235 (11.5)	50 (8.8)	44 (8.6)	94 (8.7)
Hormone Replacement Therapy, n (%)	21 (4.2)	15 (3.3)	36 (3.8)	16 (3.6)	5 (1.3)	21 (2.5)	6 (2.3)	4 (1.8)	10 (2.1)
Dietician referral, n (%)	405 (33.7)	422 (35.1)	827 (34.4)	541 (52.6)	458 (45.3)	999 (49.0)	151 (26.5)	125 (24.4)	276 (25.5)
Weight control or exercise program, n (%)	400 (33.3)	402 (33.4)	802 (33.4)	630 (61.3)	521 (51.6)	1151 (56.5)	213 (37.4)	196 (38.2)	409 (37.8)
Home blood glucose monitoring, n (%)	421 (35.0)	438 (36.4)	859 (35.7)	958 (93.2)	604 (59.8)	1562 (76.6)	375 (65.9)	310 (60.4)	685 (63.3)

SUPPLEMENTARY DATA

**Supplementary Table 3.** Glucose lowering and other therapies at of randomized treatment based on subgroup (CKD stage  $\geq 3$ ), at the first and final visits during post-trial follow-up of ADVANCE-ON

Subgroup: CKD stage $\geq 3$	Baseline			Final glucose visit (T2)			Final ADVANCE-ON visit		
	Medication	Intensive n= 1103	Standard n= 1153	Overall n= 2256	Intensive n= 898	Standard n= 912	Overall n= 1810	Intensive n= 391	Standard n= 392
Sulphonylurea (other than Gliclazide MR), n (%)	732 (66.4)	741 (64.3)	1473 (65.3)	27 ( 3.0)	487 (53.4)	514 (28.4)	67 (17.1)	90 (23.0)	157 (20.1)
Gliclazide MR (Diamicon MR), n (%)	80 ( 7.3)	83 ( 7.2)	163 ( 7.2)	748 (83.3)	20 ( 2.2)	768 (42.4)	101 (25.8)	51 (13.0)	152 (19.4)
Sulphonylurea or Gliclazide MR , n (%)	804 (72.9)	823 (71.4)	1627 (72.1)	773 (86.1)	507 (55.6)	1280 (70.7)	167 (42.7)	141 (36.0)	308 (39.3)
Sulphonylurea and Gliclazide MR , n (%)	8 ( 0.7)	1 ( 0.1)	9 ( 0.4)	2 ( 0.2)	0 ( 0.0)	2 ( 0.1)	1 ( 0.3)	0 ( 0.0)	1 ( 0.1)
Metformin, n (%)	639 (57.9)	664 (57.6)	1303 (57.8)	546 (60.8)	521 (57.1)	1067 (59.0)	155 (39.6)	161 (41.1)	316 (40.4)
Thiazolidinediones, n (%)	43 ( 3.9)	37 ( 3.2)	80 ( 3.5)	124 (13.8)	100 (11.0)	224 (12.4)	20 ( 5.1)	14 ( 3.6)	34 ( 4.3)
Glinide, n (%)	17 ( 1.5)	20 ( 1.7)	37 ( 1.6)	14 ( 1.6)	27 ( 3.0)	41 ( 2.3)	8 ( 2.0)	11 ( 2.8)	19 ( 2.4)
Acarbose, n (%)	99 ( 9.0)	91 ( 7.9)	190 ( 8.4)	156 (17.4)	109 (12.0)	265 (14.6)	33 ( 8.4)	40 (10.2)	73 ( 9.3)
Other oral hypoglycaemic, n (%)							65 (16.6)	88 (22.4)	153 (19.5)
Insulin, n (%)	20 ( 1.8)	21 ( 1.8)	41 ( 1.8)	353 (39.3)	222 (24.3)	575 (31.8)	177 (45.3)	189 (48.2)	366 (46.7)
Any Glucose lowering drug, n (%)	997 (90.4)	1044 (90.5)	2041 (90.5)	858 (95.5)	828 (90.8)	1686 (93.1)	351 (89.8)	347 (88.5)	698 (89.1)
Glucose lowering drug=0, n (%)	106 ( 9.6)	109 ( 9.5)	215 ( 9.5)	40 ( 4.5)	84 ( 9.2)	124 ( 6.9)	40 (10.2)	45 (11.5)	85 (10.9)
Glucose lowering drug=1, n (%)	448 (40.6)	493 (42.8)	941 (41.7)	155 (17.3)	308 (33.8)	463 (25.6)	141 (36.1)	120 (30.6)	261 (33.3)
Glucose lowering drug=2, n (%)	471 (42.7)	491 (42.6)	962 (42.6)	367 (40.9)	388 (42.5)	755 (41.7)	154 (39.4)	165 (42.1)	319 (40.7)
Glucose lowering drug $\geq 3$ , n (%)	78 ( 7.1)	60 ( 5.2)	138 ( 6.1)	336 (37.4)	132 (14.5)	468 (25.9)	56 (14.3)	62 (15.8)	118 (15.1)
Perindopril-Indapamide (Preterax), n (%)	95 ( 8.6)	98 ( 8.5)	193 ( 8.6)	460 (51.2)	445 (48.8)	905 (50.0)	24 ( 6.1)	34 ( 8.7)	58 ( 7.4)
ACE Inhibitors (other than Perindopril-indapamide), n (%)	464 (42.1)	471 (40.8)	935 (41.4)	39 ( 4.3)	86 ( 9.4)	125 ( 6.9)	120 (30.7)	117 (29.8)	237 (30.3)
Diuretic (other than Perindopril-indapamide), n (%)	182 (16.5)	196 (17.0)	378 (16.8)	165 (18.4)	178 (19.5)	343 (19.0)	83 (21.2)	94 (24.0)	177 (22.6)
Angiotensin-Receptor Blocker, n (%)	70 ( 6.3)	79 ( 6.9)	149 ( 6.6)	118 (13.1)	137 (15.0)	255 (14.1)	83 (21.2)	76 (19.4)	159 (20.3)
CCB overall, n (%)	385 (34.9)	396 (34.3)	781 (34.6)	357 (39.8)	373 (40.9)	730 (40.3)	152 (38.9)	169 (43.1)	321 (41.0)
Beta-blocker, n (%)	306 (27.7)	357 (31.0)	663 (29.4)	317 (35.3)	371 (40.7)	688 (38.0)	121 (30.9)	131 (33.4)	252 (32.2)
Alpha-blocker, n (%)							30 ( 7.7)	22 ( 5.6)	52 ( 6.6)
Vasodilators, n (%)							13 ( 3.3)	19 ( 4.8)	32 ( 4.1)
Any Blood pressure lowering drug, n (%)	936 (84.9)	957 (83.0)	1893 (83.9)	807 (89.9)	823 (90.2)	1630 (90.1)	305 (78.0)	309 (78.8)	614 (78.4)
Blood pressure lowering drug=0, n (%)	167 (15.1)	196 (17.0)	363 (16.1)	91 (10.1)	89 ( 9.8)	180 ( 9.9)	86 (22.0)	83 (21.2)	169 (21.6)
Blood pressure lowering drug=1, n (%)	363 (32.9)	316 (27.4)	679 (30.1)	203 (22.6)	164 (18.0)	367 (20.3)	110 (28.1)	93 (23.7)	203 (25.9)
Blood pressure lowering drug=2, n (%)	315 (28.6)	365 (31.7)	680 (30.1)	249 (27.7)	268 (29.4)	517 (28.6)	97 (24.8)	116 (29.6)	213 (27.2)
Blood pressure lowering drug $\geq 3$ , n (%)	258 (23.4)	276 (23.9)	534 (23.7)	355 (39.5)	391 (42.9)	746 (41.2)	98 (25.1)	100 (25.5)	198 (25.3)

## SUPPLEMENTARY DATA

Statin, n (%)	304 (27.6)	342 (29.7)	646 (28.6)	413 (46.0)	450 (49.3)	863 (47.7)	186 (47.6)	194 (49.5)	380 (48.5)
Aspirin, n (%)	507 (46.0)	539 (46.7)	1046 (46.4)	494 (55.0)	480 (52.6)	974 (53.8)	184 (47.1)	190 (48.5)	374 (47.8)
Other anti-platelet agent, n (%)	71 ( 6.4)	63 ( 5.5)	134 ( 5.9)	69 ( 7.7)	73 ( 8.0)	142 ( 7.8)	35 ( 9.0)	34 ( 8.7)	69 ( 8.8)
Oral anticoagulant, n (%)	66 ( 6.0)	55 ( 4.8)	121 ( 5.4)	67 ( 7.5)	57 ( 6.3)	124 ( 6.9)	27 ( 6.9)	25 ( 6.4)	52 ( 6.6)
Nitrates, n (%)	202 (18.3)	204 (17.7)	406 (18.0)	127 (14.1)	157 (17.2)	284 (15.7)	37 ( 9.5)	40 (10.2)	77 ( 9.8)
Hormone Replacement Therapy, n (%)	18 ( 3.1)	24 ( 4.0)	42 ( 3.5)	23 ( 4.6)	22 ( 4.4)	45 ( 4.5)	3 ( 1.4)	3 ( 1.4)	6 ( 1.4)
Dietician referral, n (%)	385 (34.9)	387 (33.6)	772 (34.2)	394 (43.9)	327 (35.9)	721 (39.8)	61 (15.6)	65 (16.6)	126 (16.1)
Weight control or exercise program, n (%)	382 (34.6)	381 (33.0)	763 (33.8)	471 (52.4)	360 (39.5)	831 (45.9)	134 (34.3)	117 (29.8)	251 (32.1)
Home blood glucose monitoring, n (%)	411 (37.3)	427 (37.0)	838 (37.1)	825 (91.9)	529 (58.0)	1354 (74.8)	250 (63.9)	236 (60.2)	486 (62.1)