

SUPPLEMENTARY DATA

**Supplementary Table 1. Baseline characteristics of the study participants.**

|  | <i>Females</i> | <i>Males</i> | <i>P-value, Age adjusted</i> |
|--|----------------|--------------|------------------------------|
| N  | 1217           | 1033         |                              |
| Age at baseline                            | 10.7 (4.9)     | 10.5 (5.0)   | 0.33                         |
| Annual family income, 1000 euros*          | 26.3 (14.2)    | 26.5 (14.0)  | 0.76                         |
| LDL cholesterol, mmol/L                    | 3.5 (0.8)      | 3.4 (0.8)    | 0.001                        |
| HDL cholesterol, mmol/L                    | 1.6 (0.3)      | 1.6 (0.3)    | 0.30                         |
| Triglycerides, mmol/L                      | 0.7 (0.3)      | 0.6 (0.3)    | 0.0003                       |
| Systolic BP, mmHg                          | 111.6 (11.2)   | 113.3 (12.7) | 0.0001                       |
| Insulin, mU/L                              | 10.5 (6.3)     | 8.9 (5.5)    | <0.0001                      |
| BMI, kg/m <sup>2</sup>                     | 17.9 (3.0)     | 17.8 (3.0)   | 0.64                         |
| Fruit, consumption frequency per week      | 7.0 (2.8)      | 6.8 (2.8)    | 0.03                         |
| Vegetables, consumption frequency per week | 6.5 (2.8)      | 6.2 (2.9)    | 0.03                         |
| Physical activity index †                  |                |              |                              |
| for 3-6 year-olds (range 8-23)             | 15.7 (2.3)     | 16.6 (2.3)   | <0.0001                      |
| for 9-18 year-olds (range 5-14)            | 8.7 (1.6)      | 9.5 (2.0)    | <0.0001                      |

Data are mean ±SD.

\*Finnish currency in 1980 is converted to thousands of euros, and the levels adjusted to correspond to 2011 levels.

†P-value is for z-score combined variable.

LDL: low-density lipoprotein

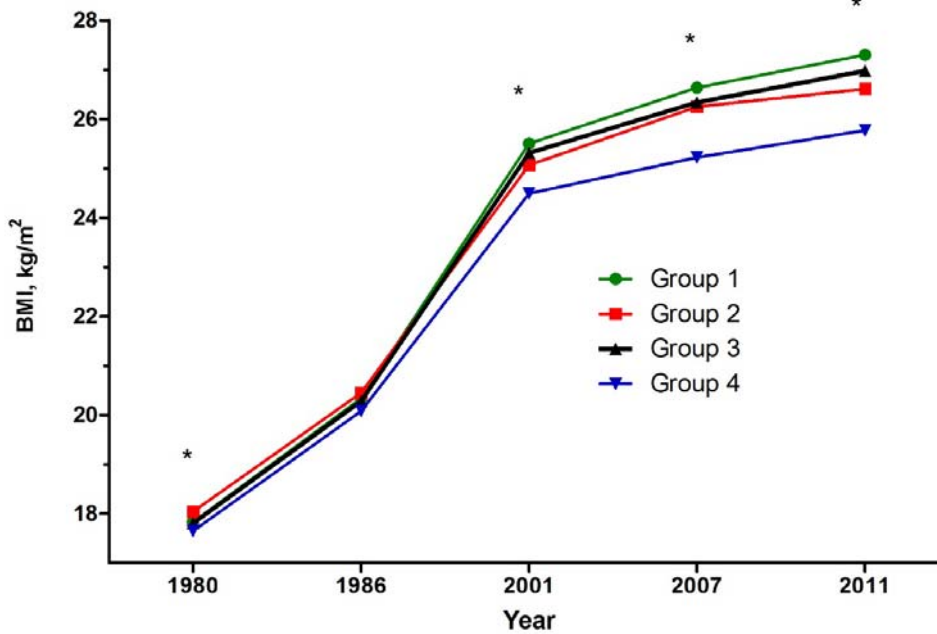
HDL: high-density lipoprotein

BP: blood pressure

BMI: body mass index

SUPPLEMENTARY DATA

**Supplementary Figure 1. Mean BMI trajectories across the life course according to the childhood-adulthood SES groups. (range in N= 1723-2233)**



\* $p < 0.05$  for Tukey-Kramer adjusted multiple comparisons between groups 2 and 4 in 1980; groups 1 and 4, groups 3 and 4 in 2001; groups 1 and 4, groups 2 and 4, groups 3 and 4 in 2007 and in 2011

Adjusted for age (3-18 years at baseline) and sex.

Group 1: SES under median in childhood and in adulthood

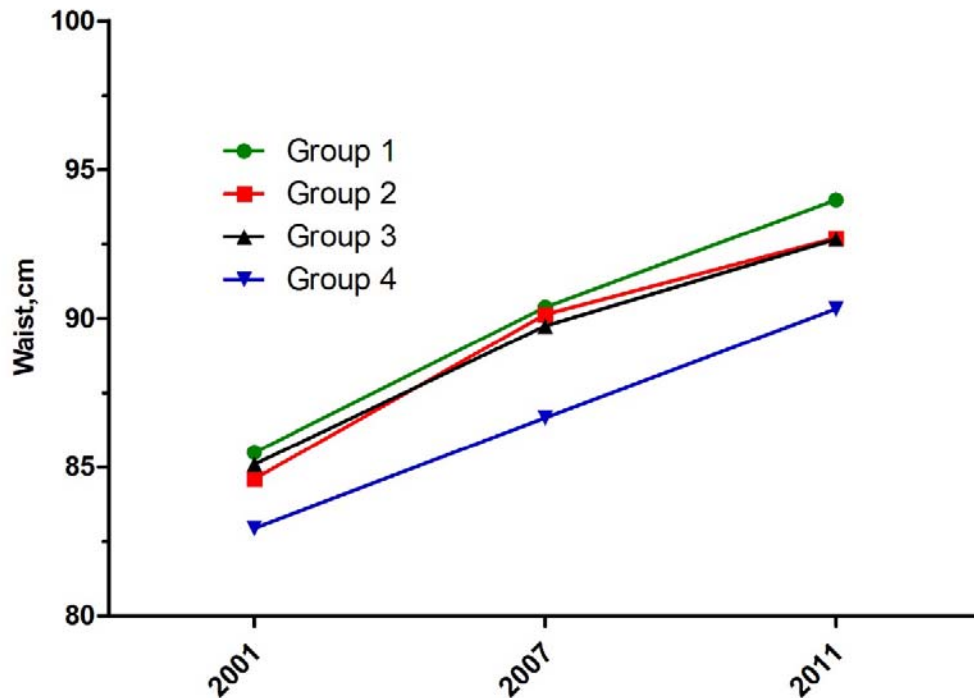
Group 2: SES above median in childhood and below it in adulthood

Group 3: SES below median in childhood and above it in adulthood

Group 4: SES above median in childhood and in adulthood

SUPPLEMENTARY DATA

**Supplementary Figure 2. Mean waist trajectories across the life course according to the childhood-adulthood SES groups. (range in N= 1801-2027)**



\* $p < 0.05$  for Tukey-Kramer adjusted multiple comparisons between groups 1 and 4, groups 2 and 4, groups 3 and 4 in 2001, in 2007 and in 2011

Adjusted for age (3-18 years at baseline) and sex.

Group 1: SES under median in childhood and in adulthood

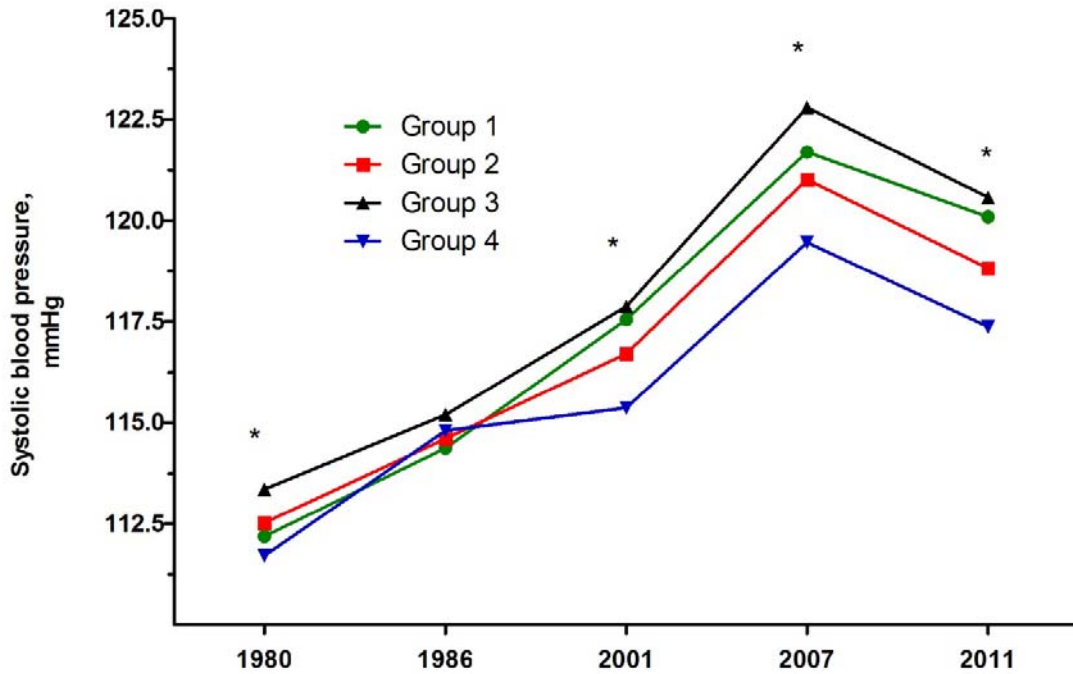
Group 2: SES above median in childhood and below it in adulthood

Group 3: SES below median in childhood and above it in adulthood

Group 4: SES above median in childhood and in adulthood

SUPPLEMENTARY DATA

**Supplementary Figure 3. Mean systolic blood pressure trajectories across the life course according to the childhood-adulthood SES groups. (N = 1722-2231)**



\* $p < 0.05$  for Tukey-Kramer adjusted multiple comparisons between groups 3 and 4 in 1980; groups 1 and 4, groups 3 and 4 in 2001, in 2007 and in 2011

Adjusted for age (3-18 years at baseline) and sex

Group 1: SES under median in childhood and in adulthood

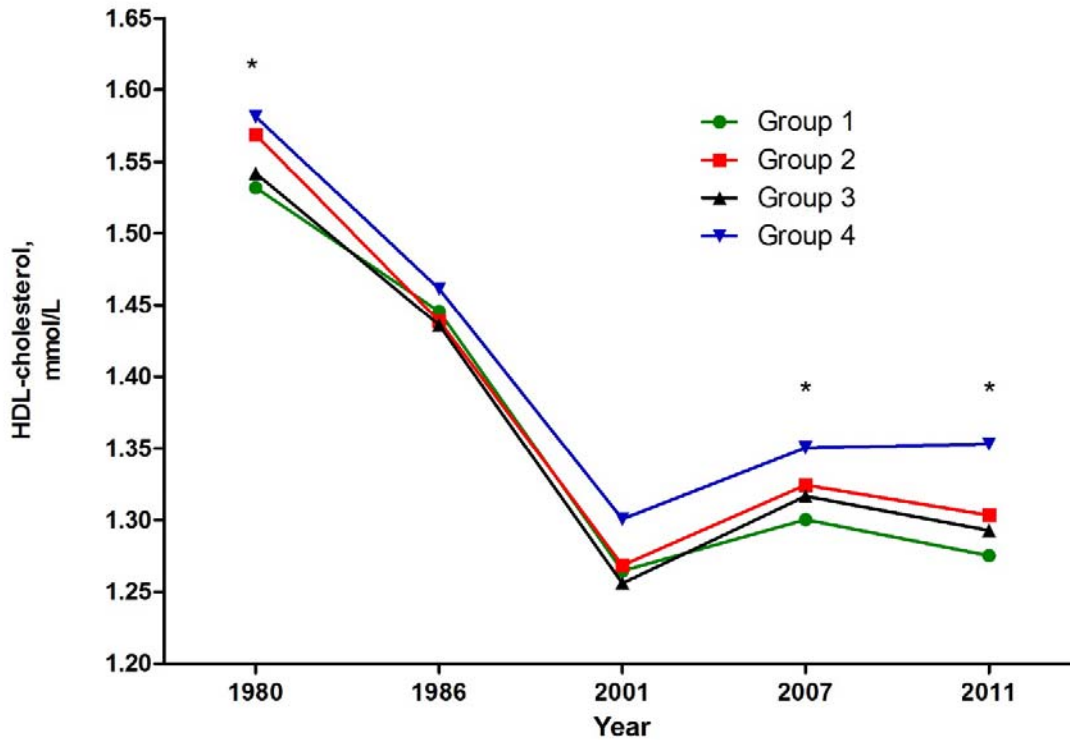
Group 2: SES above median in childhood and below it in adulthood

Group 3: SES below median in childhood and above it in adulthood

Group 4: SES above median in childhood and in adulthood

SUPPLEMENTARY DATA

**Supplementary Figure 4. Mean HDL-cholesterol trajectories across the life course according to the childhood-adulthood SES groups. (N = 1718-2223)**



\* $p < 0.05$  for Tukey-Kramer adjusted multiple comparisons between groups 1 and 4 in 1980; groups 1 and 4 in 2007; groups 1 and 4, groups 3 and 4 in 2011

Adjusted for age (3-18 years at baseline) and sex.

Group 1: SES under median in childhood and in adulthood

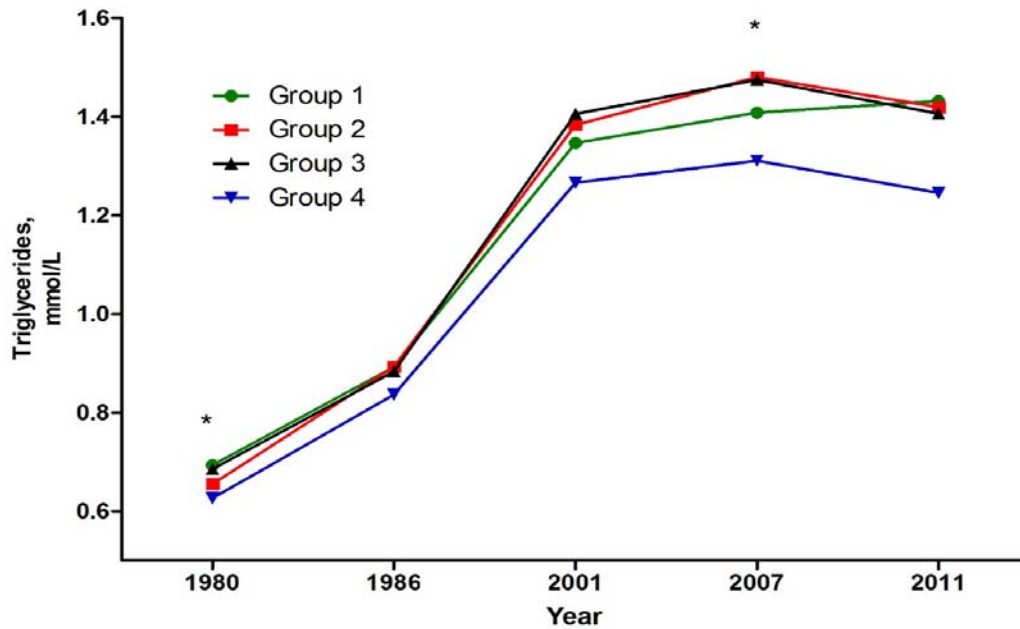
Group 2: SES above median in childhood and below it in adulthood

Group 3: SES below median in childhood and above it in adulthood

Group 4: SES above median in childhood and in adulthood

SUPPLEMENTARY DATA

**Supplementary Figure 5. Mean triglycerides trajectories across the life course according to the childhood-adulthood SES groups. (N = 1713-2225)**



\* $p < 0.05$  for Tukey-Kramer adjusted multiple comparisons between groups 1 and 4, groups 3 and 4 in 1980; groups 2 and 4, groups 3 and 4 in 2007

Adjusted for age (3-18 years at baseline) and sex

Group 1: SES under median in childhood and in adulthood

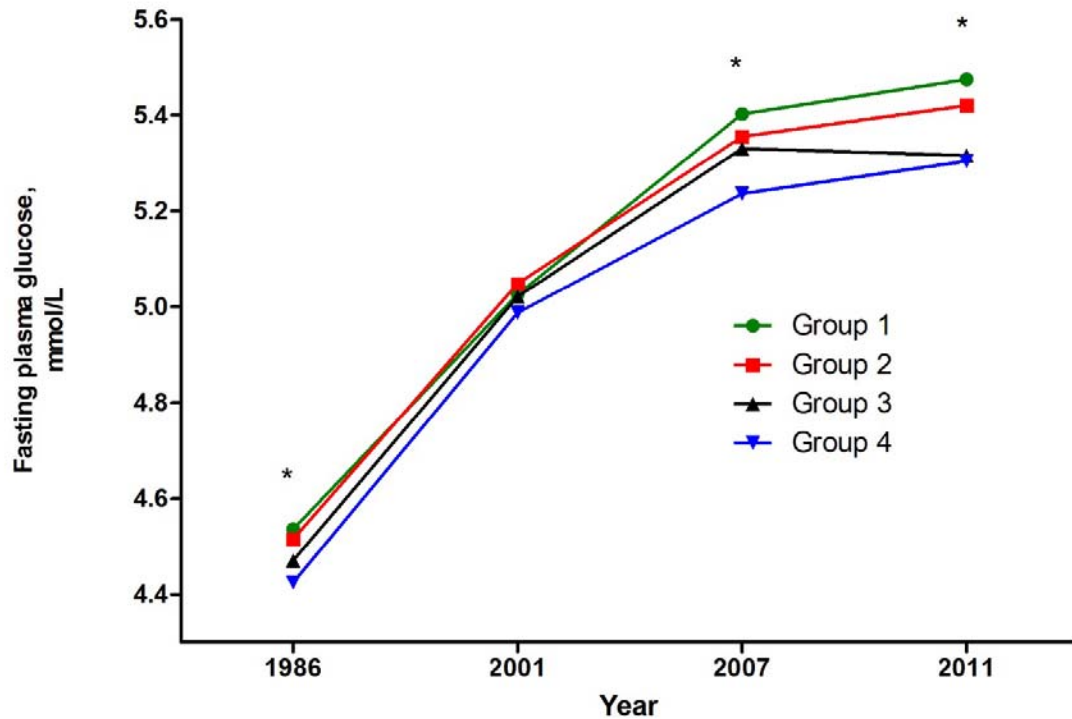
Group 2: SES above median in childhood and below it in adulthood

Group 3: SES below median in childhood and above it in adulthood

Group 4: SES above median in childhood and in adulthood

SUPPLEMENTARY DATA

**Supplementary Figure 6. Mean fasting plasma glucose trajectories across the life course according to the childhood-adulthood SES groups. (N = 1668-2044)**



\* $p < 0.05$  for Tukey-Kramer adjusted multiple comparisons between groups 1 and 4, group 2 and in 1986 and in 2007; groups 1 and 3, groups 1 and 4 in 2011

Adjusted for age (3-18 years at baseline) and sex.

Group 1: SES under median in childhood and in adulthood

Group 2: SES above median in childhood and below it in adulthood

Group 3: SES below median in childhood and above it in adulthood

Group 4: SES above median in childhood and in adulthood