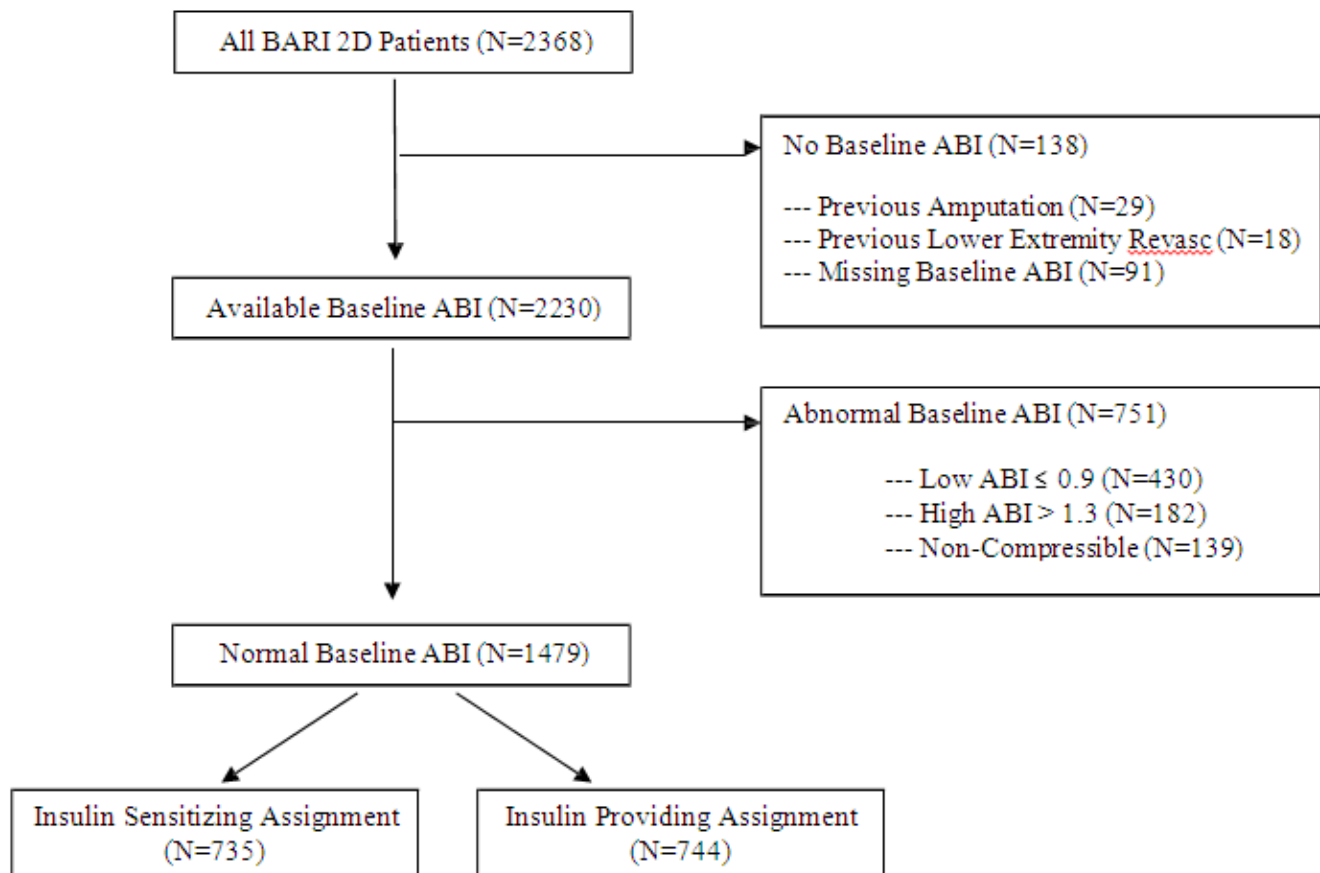


SUPPLEMENTARY DATA

**Supplementary Figure 1.** Flowchart of Ankle-Brachial Index Measurements Available in All BARI 2D Patients (N=2368).



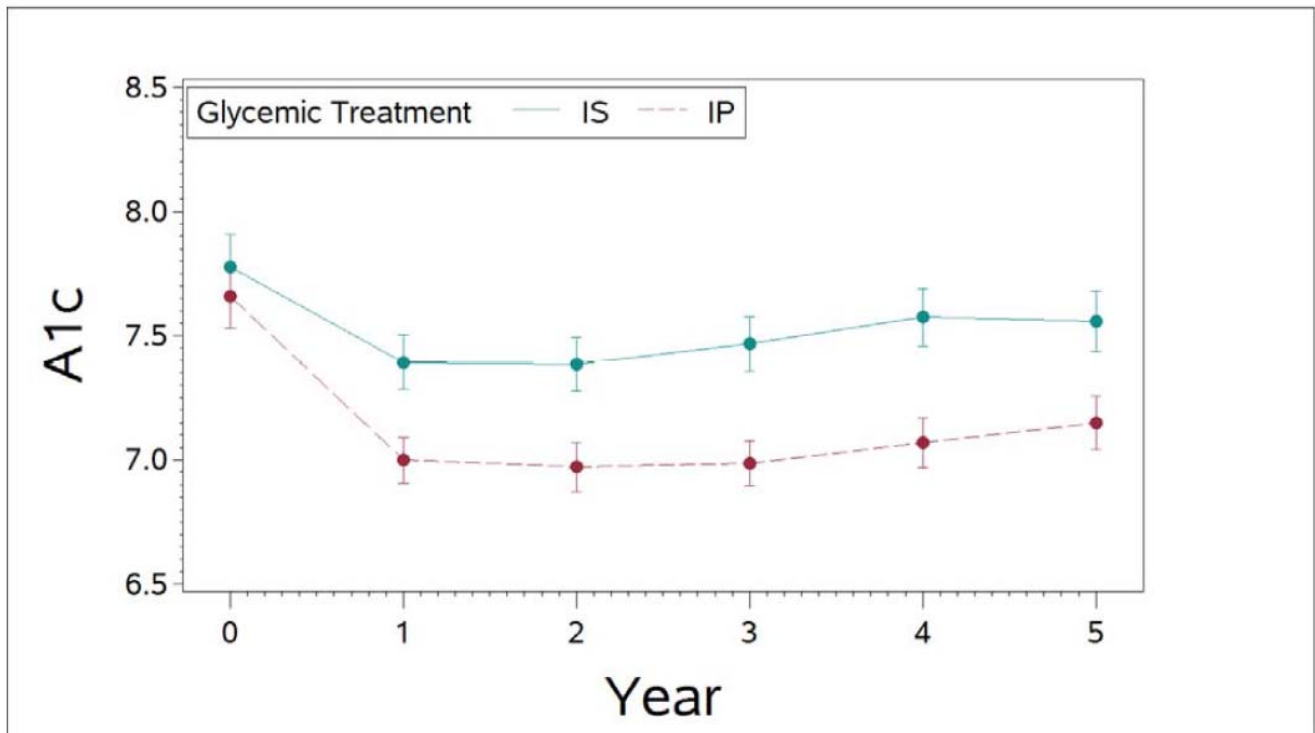
**Supplementary Table 1.** Multivariate Associations<sup>^</sup> Between Selected Variables and Incidence of PAD-Related Lower Extremity Outcomes

Risk Factor	Hazard Ratio	95% CI
Age (Per 10 years)	1.26***	1.13-1.40
Sex (Female vs. Male)	1.39***	1.09-1.78
Race (Black vs. non-Black)	1.41**	1.07-1.87
Smoking At Baseline (Yes vs. No)	1.76***	1.29-2.41
Baseline ABI (Per 0.1 decrease)	12.5***	3.57-50.0

<sup>^</sup>Variables simultaneously included in multivariate Cox proportional hazards regression model  
 \*P<0.10; \*\*P<0.05; \*\*\*P<0.01

SUPPLEMENTARY DATA

**Supplementary Figure 2.** HbA1c (%) Over Time by Assigned Glycemic Control Strategy.



**Supplementary Table 2.** Multivariate Associations<sup>^</sup> Between Time-Varying Change in HbA1c and Incidence of PAD-Related Lower Extremity Outcomes, Stratified By Assigned Glycemic Treatment.

	IP Patients (N=744)		IS Patients (N=735)	
	Hazard Ratio	95% CI	Hazard Ratio	95% CI
Age (per 10 years)	1.39***	1.18-1.60	1.36**	1.14-1.59
Sex (Female)	1.41**	1.02-1.98	1.22	0.81-1.84
Race (Black)	1.55**	1.05-2.28	1.49*	0.93-2.39
Smoking At Baseline (Yes vs. No)	2.10***	1.37-3.22	1.75**	1.03-3.00
Baseline ABI (per 0.1 decrease)	5.26***	1.04-25.0	8.33**	1.18-50.0
Baseline HbA1c (per 1% increase)	1.25***	1.11-1.40	1.15*	0.99-1.34
Change in HbA1c (per 1% increase)	1.16***	1.04-1.30	0.93	0.80-1.09

<sup>^</sup>Stratified models created using forward selection algorithm with age, sex, race, and smoking forced to enter model and all risk factors listed in Table 2 eligible as candidate variables

\*P<0.10; \*\*P<0.05; \*\*\*P<0.01