

SUPPLEMENTARY DATA

Supplementary Table 1. Results of sensitivity analyses on all patients (n=87,098).

	Model I (Base Case)	Model Ib	Model Ic	Model II (Base Case)	Model IIa	Model IIb	Model IIc
All-cause mortality							
All patients	2.22 (2.10, 2.35)	2.22 (2.10, 2.34)	2.22 (2.10, 2.35)	2.12 (2.00, 2.25)	2.20 (2.08, 2.32)	2.13 (2.01, 2.26)	2.12 (2.00, 2.25)
Men	2.13 (1.99, 2.28)	2.12 (1.98, 2.27)	2.13 (1.99, 2.28)	1.93 (1.79, 2.07)	2.09 (1.94, 2.24)	1.94 (1.80, 2.09)	1.93 (1.79, 2.07)
Women	2.42 (2.20, 2.67)	2.42 (2.20, 2.66)	2.42 (2.20, 2.67)	2.47 (2.23, 2.72)	2.44 (2.22, 2.69)	2.46 (2.23, 2.72)	2.46 (2.23, 2.72)
Under 55 years	2.64 (2.37, 2.95)	2.66 (2.38, 2.96)	2.64 (2.37, 2.95)	2.72 (2.42, 3.06)	2.72 (2.43, 3.04)	2.75 (2.44, 3.10)	2.72 (2.42, 3.06)
Over 55 years	2.11 (1.97, 2.25)	2.09 (1.96, 2.23)	2.11 (1.97, 2.25)	2.03 (1.89, 2.17)	2.10 (1.97, 2.24)	2.02 (1.88, 2.16)	2.03 (1.89, 2.17)
Cardiovascular mortality							
All patients	3.52 (3.15, 3.94)	3.51 (3.14, 3.93)	3.52 (3.15, 3.94)	3.28 (2.91, 3.70)	3.43 (3.06, 3.85)	3.29 (2.92, 3.71)	3.28 (2.91, 3.70)
Men	3.23 (2.85, 3.67)	3.23 (2.84, 3.67)	3.23 (2.85, 3.67)	3.85 (2.49, 3.78)	3.13 (2.75, 3.57)	2.87 (2.50, 3.30)	2.85 (2.49, 3.28)
Women	4.72 (3.72, 6.00)	4.71 (3.71, 5.98)	4.72 (3.72, 6.00)	4.80 (3.73, 6.17)	4.85 (3.81, 6.17)	4.80 (3.73, 6.17)	4.80 (3.73, 6.17)
Under 55 years	3.81 (3.01, 4.82)	3.83 (3.02, 4.85)	3.80 (3.00, 4.82)	3.91 (3.02, 5.04)	3.92 (3.09, 4.98)	3.96 (3.06, 5.12)	3.91 (3.02, 5.04)
Over 55 years	3.46 (3.05, 3.93)	3.43 (3.02, 3.89)	3.46 (3.05, 3.93)	3.24 (2.83, 3.71)	3.40 (2.98, 3.87)	3.23 (2.82, 3.70)	3.24 (2.83, 3.71)

Data shown are hazard ratios (95% CI) for people with diabetes compared to people without diabetes, matched on age, sex and general practice.

Model I: Base case, unadjusted, four categories of smoking.

Model Ib: Censoring at transfer-out date or 31/12/10, unadjusted, four categories of smoking

Model Ic: Censoring at date of diagnosis of diabetes in people who were without diabetes at baseline, death or 31/12/10, unadjusted, four categories of smoking.

Model II: Base case, adjusted for smoking, four-way classification of smoking status.

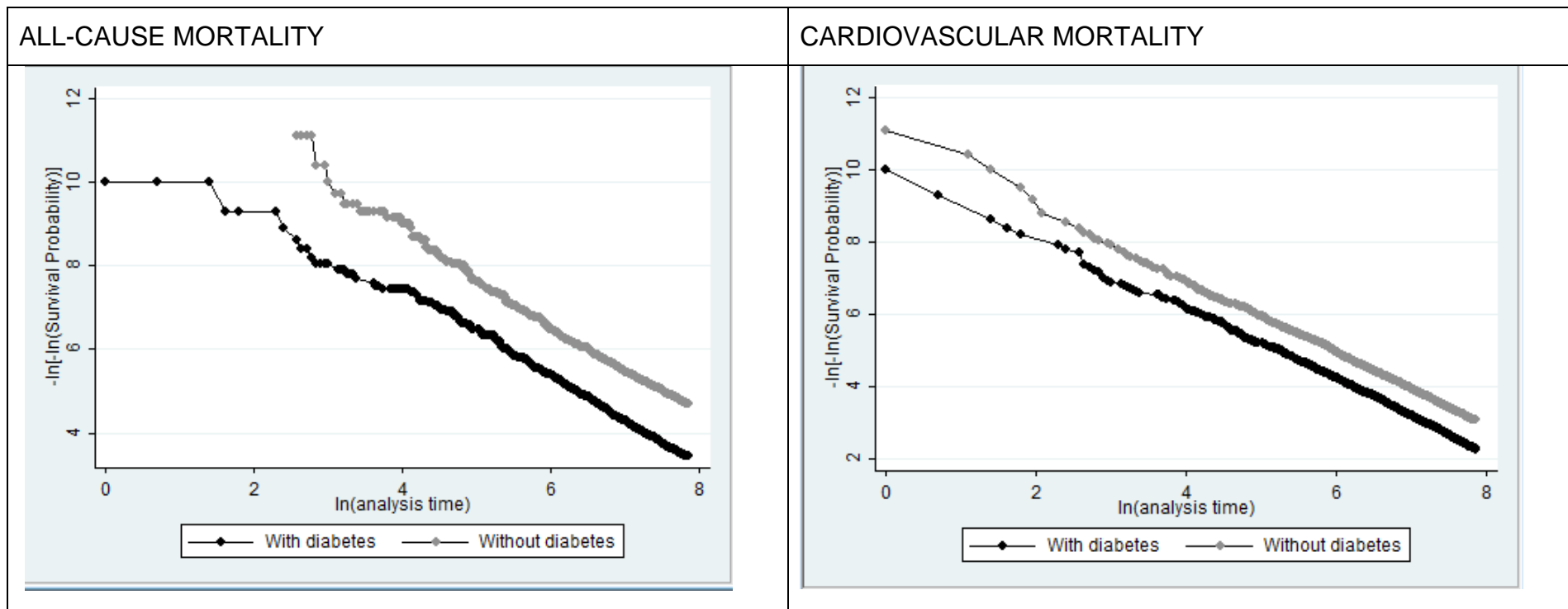
Model IIa: Adjusted for smoking, three categories of smoking by combining non smokers and unknowns into a single category.

Model IIb: Censoring at transfer-out date or 31/12/10, adjusted for smoking, four categories of smoking.

Model IIc: Censoring at date of diagnosis of diabetes in people who were without diabetes at baseline, death or 31/12/10, adjusted for smoking, four categories of smoking.

SUPPLEMENTARY DATA

Supplementary Figure 1. Testing the proportionality assumption, split by group.

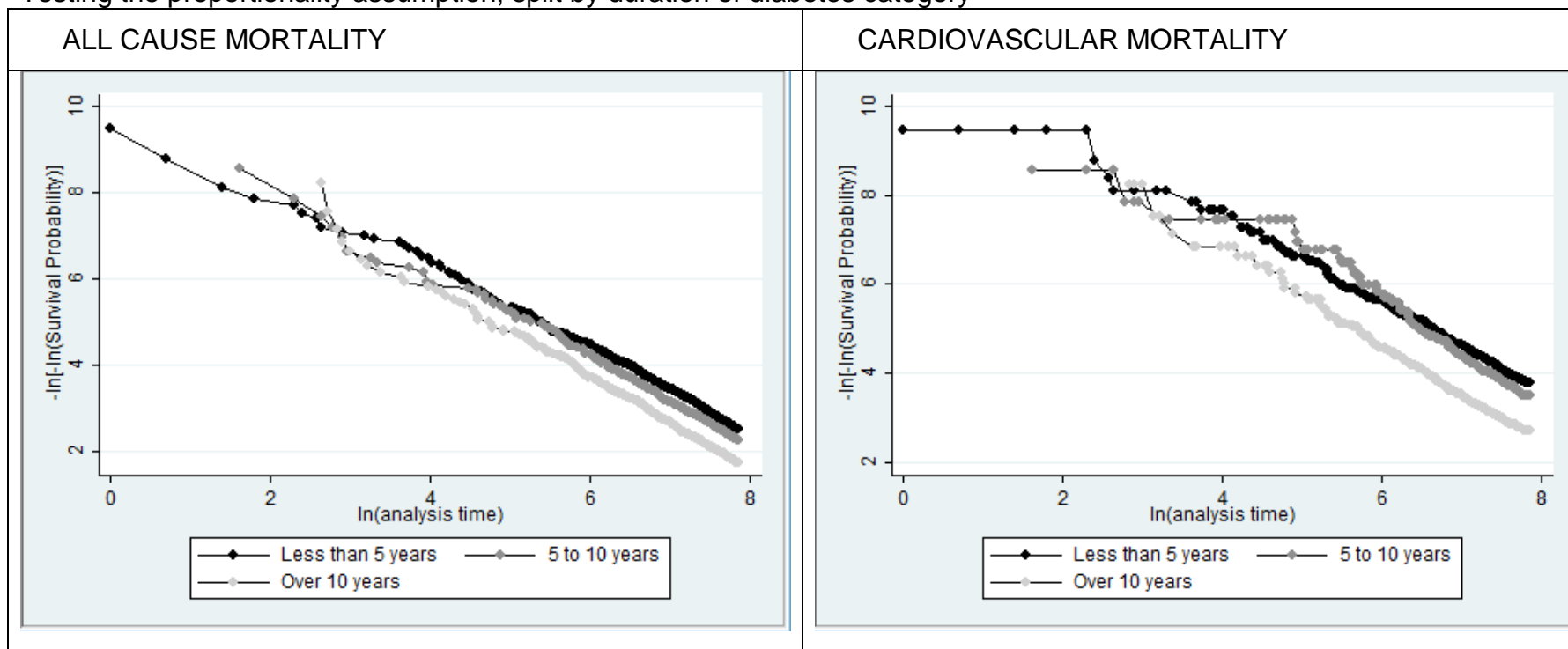


Existence of parallel lines suggests the proportionality assumption is satisfied.

SUPPLEMENTARY DATA

Supplementary Figure 2A. Results of analysis and sensitivity analyses on diabetes group (n=21798)

Testing the proportionality assumption, split by duration of diabetes category



Existence of parallel lines in plot for all-cause mortality suggests proportionality assumption was met. Lines crossed in the plot for cardiovascular mortality so sensitivity analysis was carried out to compare the HRs with those generated only using data for the period region where lines were parallel. There were no significant changes in the HRs (data not shown).

SUPPLEMENTARY DATA

Supplementary Figure 2B. Hazard ratios of all-cause mortality and cardiovascular mortality.

	Model I			Model II		
	Under 5 years v 5-10 years	5-10 years	Over 10 years v 5-10 years	Under 5 years v 5-10 years	5-10 years	Over 10 years v 5-10 years
ALL-CAUSE MORTALITY						
All patients	0.77 (0.70, 0.86)	1	1.69 (1.51, 1.90)	-	-	-
Men	0.81 (0.71, 0.92)	1	1.82 (1.58, 2.11)	-	-	-
Women	0.73 (0.61, 0.87)	1	1.50 (1.23, 1.83)	-	-	-
Under 55 years	0.64 (0.53, 0.78)	1	1.43 (1.14, 1.79)	-	-	-
Over 55 years	0.88 (0.77, 1.00)	1	1.71 (1.49, 1.97)	-	-	-
CARDIOVASCULAR MORTALITY						
All patients	0.75 (0.62, 0.91)	1	2.21 (1.80, 2.72)	0.70 (0.56, 0.87)	1	2.08 (1.65, 2.62)
Men	0.80 (0.64, 1.00)	1	2.18 (1.72, 2.78)	0.76 (0.59, 0.98)	1	2.07 (1.58, 2.71)
Women	0.66 (0.44, 0.99)	1	2.44 (1.63, 3.64)	0.57 (0.36, 0.90)	1	2.23 (1.43, 3.49)
Under 55 years	0.71 (0.48, 1.05)	1	2.02 (1.31, 3.12)	0.65 (0.42, 1.00)	1	1.67 (1.02, 2.72)
Over 55 years	0.81 (0.64, 1.02)	1	2.13 (1.68, 2.70)	0.75 (0.58, 0.98)	1	2.07 (1.59, 2.70)

Data shown are hazard ratios (95% CI) for diabetics with duration 5-10 years and duration over 10 years, each compared to those with duration less than 5 years (reference group).

Model I: Base case (1/1/04-31/12/10), unadjusted.

Model II: Sensitivity analysis, for period that proportionality assumption holds (25/7/05-31/12/10), unadjusted.