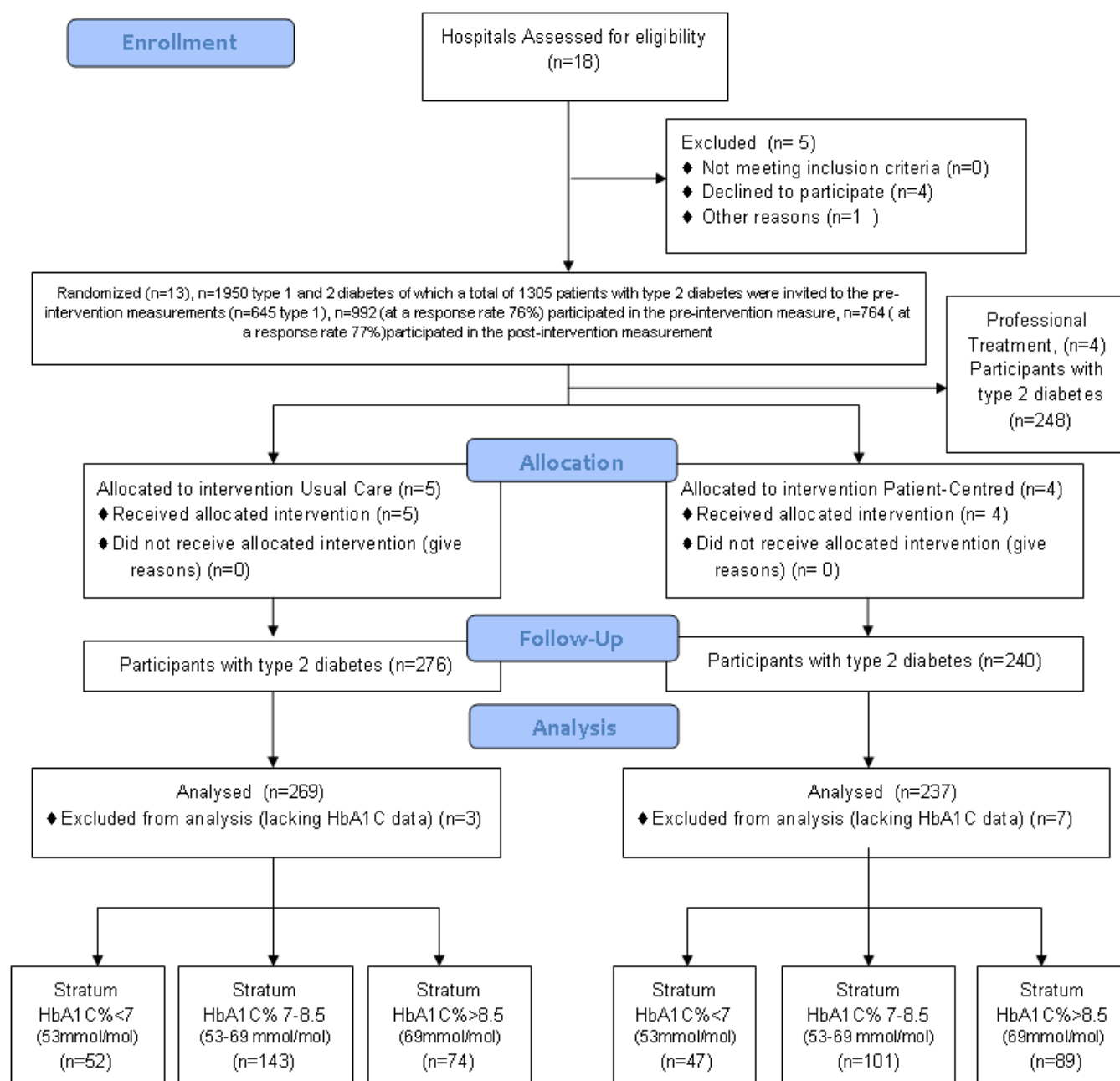


Supplementary Figure 1. CONSORT 2010 Flow Diagram

Schulz KF, Altman DG, Moher D, for the CONSORT Group. CONSORT 2010 Statement: updated guidelines for reporting parallel group randomised trials. *BMJ* 2010;340:c332. Also after Dijkstra RF, Braspenning JCC, Huijsmans Z, Peters S, van Ballegooie E, ten Have P, Casparie AF, Grol RPTM. Patients and nurses determine variation in adherence to guidelines at Dutch hospitals more than internists or settings. *Diabetic Medicine* 2004;21:586-591, after Dijkstra RF, Niessen LW, Braspenning JCC, Adang E, Grol RPTM. Patient-centred and professional-directed implementation strategies for diabetes guidelines: a cluster-randomized trial-based cost-effectiveness analysis. *Diabetic Medicine* 2005;23:164-170, and after Dijkstra RF, Braspenning JCC, Huijsmans A, Akkermans RP, van Ballegooie E, ten Have P, Casparie T, Grol RPTM. Introduction of diabetes passports involving both patients and

SUPPLEMENTARY DATA

professionals to improve hospital outpatient diabetes care. Diabetic Research and Clinical Practice 2005;68:126-134.

[http://www.ncbi.nlm.nih.gov/pubmed?term=\(\(%22Diabetes%20research%20and%20clinical%20practice%22%5BJournal%5D\)\)%20AND%20dijkstra%5BAuthor%5D](http://www.ncbi.nlm.nih.gov/pubmed?term=((%22Diabetes%20research%20and%20clinical%20practice%22%5BJournal%5D))%20AND%20dijkstra%5BAuthor%5D)