

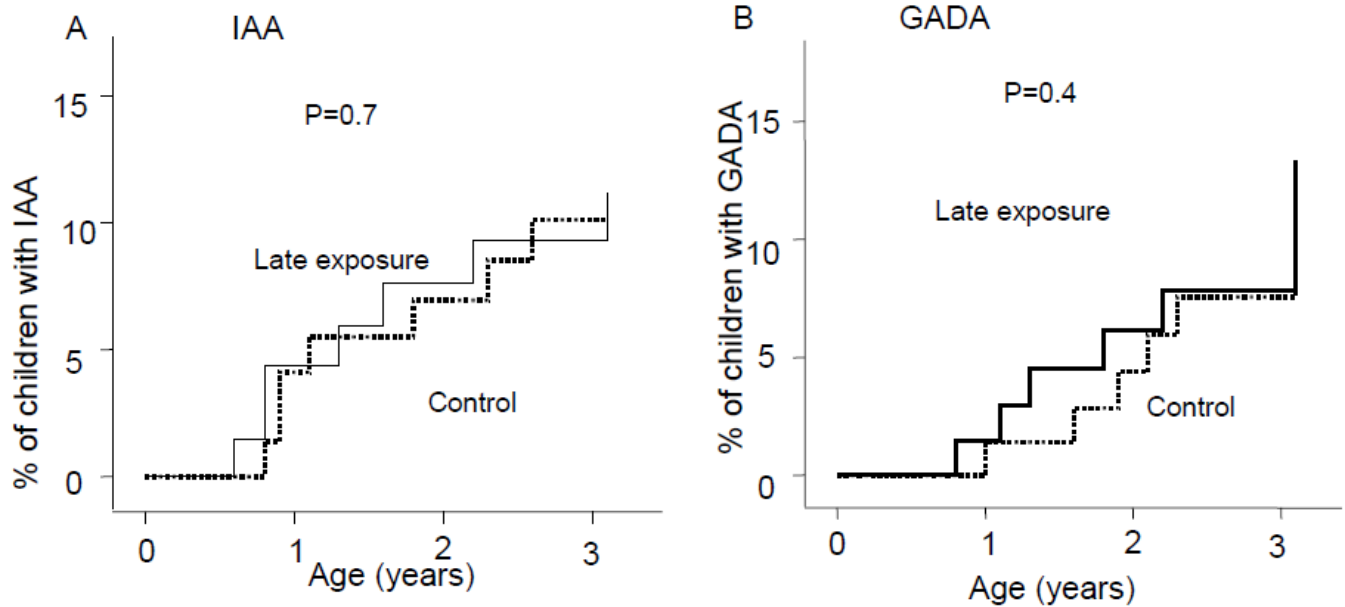
SUPPLEMENTARY DATA

Supplementary Table 1: Characteristics of the study cohort

	Control group N=76	Late exposure group N=73
HLA genotype; n		
DR3/4	34	29
DR4/4	13	16
DR3/3	13	15
DR 4/1 or 4/8	11	7
Other (plus multiple T1D FDRs)	6	6
T1D Family history; n		
Father	23	25
Mother	32	29
Sibling	11	8
Multiple	11	11
Female/male; n/n	45/32	38/35
Follow-up time, years, median (IQR)	4.0 (2.9-5.2)	4.1 (3.0-5.5)

SUPPLEMENTARY DATA

Supplementary Figure 1: Kaplan-Meier analysis of autoantibody frequency to insulin (A) and GAD (B) in offspring randomised to the BABYDIET late exposure group (solid line) and the BABYDIET control group (broken line).



Supplementary Figure 2: Kaplan-Meier analysis of the probability to develop islet autoantibodies (A) and t-TGCA (B) in children who were reported to first receive gluten containing foods as per protocol at 4.5 to 7.5 months of age (broken line) or 10.5 to 13.5 months of age (solid line).

